

# HE Windows 2000, Xp, Vista and 7 Driver

1w0300929 Rev3 2011-11-03



## APPLICABILITY TABLE

PRODUCT
HE863 Family
HE910 Family

SW Version
U8.00.00



## Disclaimer

The information contained in this document is the proprietary information of Telit Communications S.p.A. and its affiliates (“TELIT”).

The contents are confidential and any disclosure to persons other than the officers, employees, agents or subcontractors of the owner or licensee of this document, without the prior written consent of Telit, is strictly prohibited.

Telit makes every effort to ensure the quality of the information it makes available. Notwithstanding the foregoing, Telit does not make any warranty as to the information contained herein, and does not accept any liability for any injury, loss or damage of any kind incurred by use of or reliance upon the information.

Telit disclaims any and all responsibility for the application of the devices characterized in this document, and notes that the application of the device must comply with the safety standards of the applicable country, and where applicable, with the relevant wiring rules.

Telit reserves the right to make modifications, additions and deletions to this document due to typographical errors, inaccurate information, or improvements to programs and/or equipment at any time and without notice.

Such changes will, nevertheless be incorporated into new editions of this document.

Copyright: Transmittal, reproduction, dissemination and/or editing of this document as well as utilization of its contents and communication thereof to others without express authorization are prohibited. Offenders will be held liable for payment of damages. All rights are reserved.

Copyright © Telit Communications S.p.A. 2011.



## Contents

<b>1. Introduction .....</b>	<b>5</b>
1.1. Scope .....	5
1.2. Audience .....	5
1.3. Contact Information, Support.....	5
1.4. Product Overview.....	5
1.5. Document Organization.....	5
1.6. Text Conventions .....	6
<b>2. Requirements .....</b>	<b>7</b>
<b>3. USB driver download and installation.....</b>	<b>8</b>
3.1. Installation.....	8
3.2. Disabling USB IMEI identification .....	12
<b>4. Dial-Up Connection .....</b>	<b>13</b>
4.1. Creation of dialup connection on HSPA USB Modem port .....	13
4.2. Connect using Dial-Up (USB mode) .....	18
<b>5. Document History .....</b>	<b>20</b>



## 1. Introduction

### 1.1. Scope

This document should provide information needed to install the USB drivers for Telit modules.

### 1.2. Audience

This User Guide is intended for users who need to install and use one of Telit HE modems.

### 1.3. Contact Information, Support

Our aim is to make this guide as helpful as possible. Keep us informed of your comments and suggestions for improvements.

For general contact, technical support, report documentation errors and to order manuals, contact Telit's Technical Support Center at:

EMEA: [TS-EMEA@telit.com](mailto:TS-EMEA@telit.com)

NorthAmerica: [TS-NorthAmerica@telit.com](mailto:TS-NorthAmerica@telit.com)

LatinAmerica: [TS-LATINAMERICA@telit.com](mailto:TS-LATINAMERICA@telit.com)

APAC: [TS-APAC@telit.com](mailto:TS-APAC@telit.com)

Telit: <http://www.telit.com/en/products/technical-support-center/contact.php>

Telit appreciates feedback from the users of our information.

### 1.4. Product Overview

HE863 and HE910 modules contain a fully featured HSPA modem and UMTS/GSM/GPRS module.

### 1.5. Document Organization

This manual contains the following chapters:



- “Chapter 1, Introduction” provides a scope for this manual, target audience, technical contact information, and text conventions.
- “Chapter 2, Requisites” describes requisites for install Telit HE863 or HE910 USB driver in a PC with Windows 2000, XP, Vista and 7 OS installed.
- “Chapter 3, USB Driver download and Installation” describes how to add the Telit HE863 or HE910 USB driver in a PC with Windows 2000, XP, Vista and 7 OS installed.
- “Chapter 4, Dial-Up Connection” describes how to use the Telit HE863 or HE910 USB driver for start a dial-up connection.

## 1.6. Text Conventions

This section lists the paragraph and font styles used for the various types of information presented in this user guide.

Format	Content
Arial monospaced	Filesystem paths, and Windows Xp, Vista and 7 OS menu items



## 2. Requirements

Below there are the HW and SW requirements to install HE module:

- PC Windows 2000, XP, Vista or 7 OS installed,
- HE module,
- HE USB Drivers, to get the driver please contact Telit Support :
  - EMEA: [TS-EMEA@telit.com](mailto:TS-EMEA@telit.com)
  - NorthAmerica: [TS-NorthAmerica@telit.com](mailto:TS-NorthAmerica@telit.com)
  - LatinAmerica: [TS-LATINAMERICA@telit.com](mailto:TS-LATINAMERICA@telit.com)
  - APAC: [TS-APAC@telit.com](mailto:TS-APAC@telit.com)





## 3. USB driver download and installation

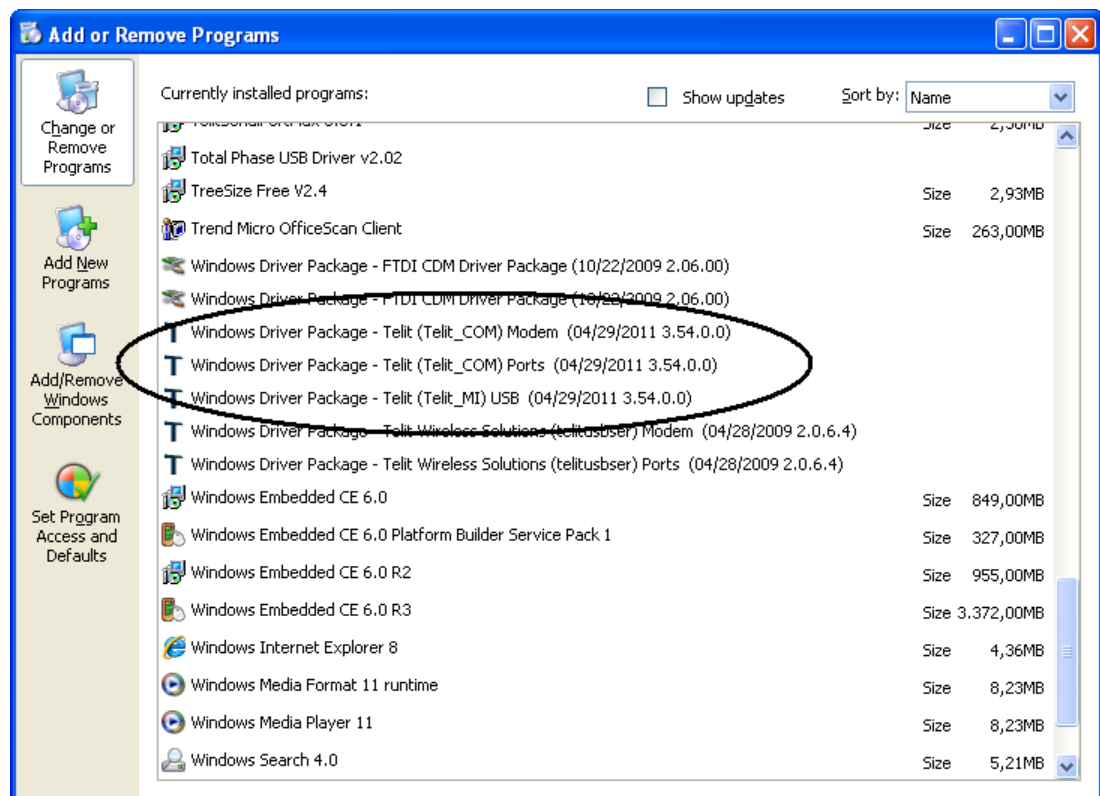
### 3.1. Installation

The following list of files needs to be available on the PC used for the installation procedure:

- TelitUSBInstaller\_x.xx.xx.zip (x.xx.xx depends on the version)

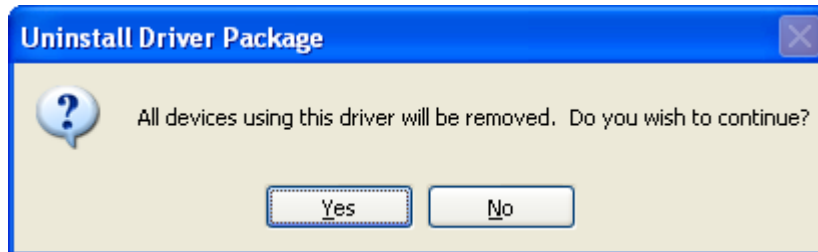
To install the USB driver follow these steps:

1. Download driver archive and uncompress it in a specific directory (e.g. c:\Telit\_Usb\_driver) where the installer executable can be found
2. If connected, disconnect the HE module from the PC. If installed, uninstall previous versions of the driver using following steps:
  - a. Start -> ControlPanel;
  - b. Double click on "Add or Remove Programs";
  - c. Scroll down until "Windows Driver Package – Telit (Telit\_XXX)..."





- d. Firstly, select “Windows Driver Package – Telit (Telit\_COM) Modem” and press on “Change/Remove” button.
- e. The following window will appear, press Yes:

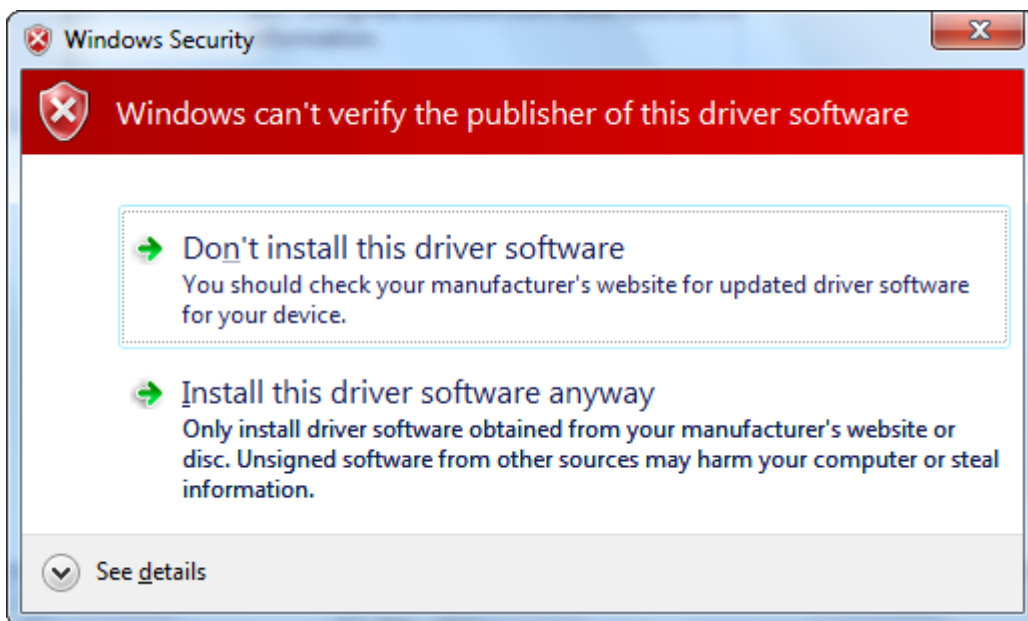


- f. Now remove the other drivers, Ports and USB.
3. Run the installer and follow the instructions



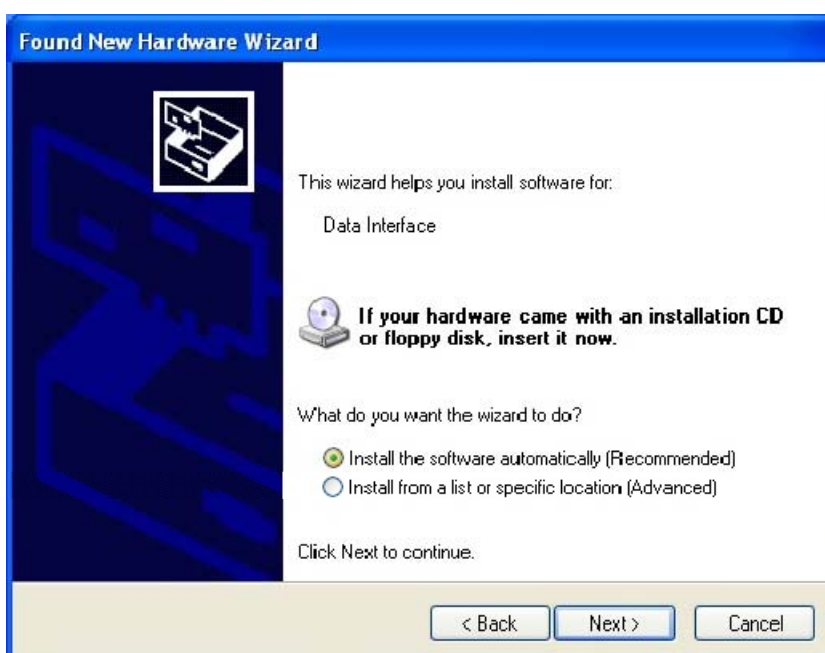
If there appears one of the following windows click *“Continue anyway”* or *“Install this driver software anyway”*





4. After finishing the installation connect the HE module to the PC using the USB cable: the procedure *"Found new hardware wizard"* will start. If requested, don't let Windows connect to Windows Update and choose *"Install the software automatically (Recommended)"*.





At the end of the installation 6 COM ports and a modem device are installed in the system:

- a) Telit Mobile Highspeed Modem
- b) Telit Mobile (USB1)
- c) Telit Mobile (USB2)



- d) Telit Mobile (USB3)
- e) Telit Mobile (USB4)
- f) Telit Mobile (USB5)
- g) Telit Mobile (USB6)

## 3.2. Disabling USB IMEI identification

By default each time a device with a different IMEI is connected, the operating system will require searching for the drivers and will create a new set of ports (with different COM enumeration).

For disabling this behaviour double click on the file `Telit_disable_USB_IMEI_identification.reg`, found inside the installation package, **before installing the driver** (if already installed, uninstall it and reinstall after adding the required registry keys).

For enabling again this behaviour uninstall the driver, double click on the file `Telit_enable_USB_IMEI_identification.reg` and reinstall the driver.



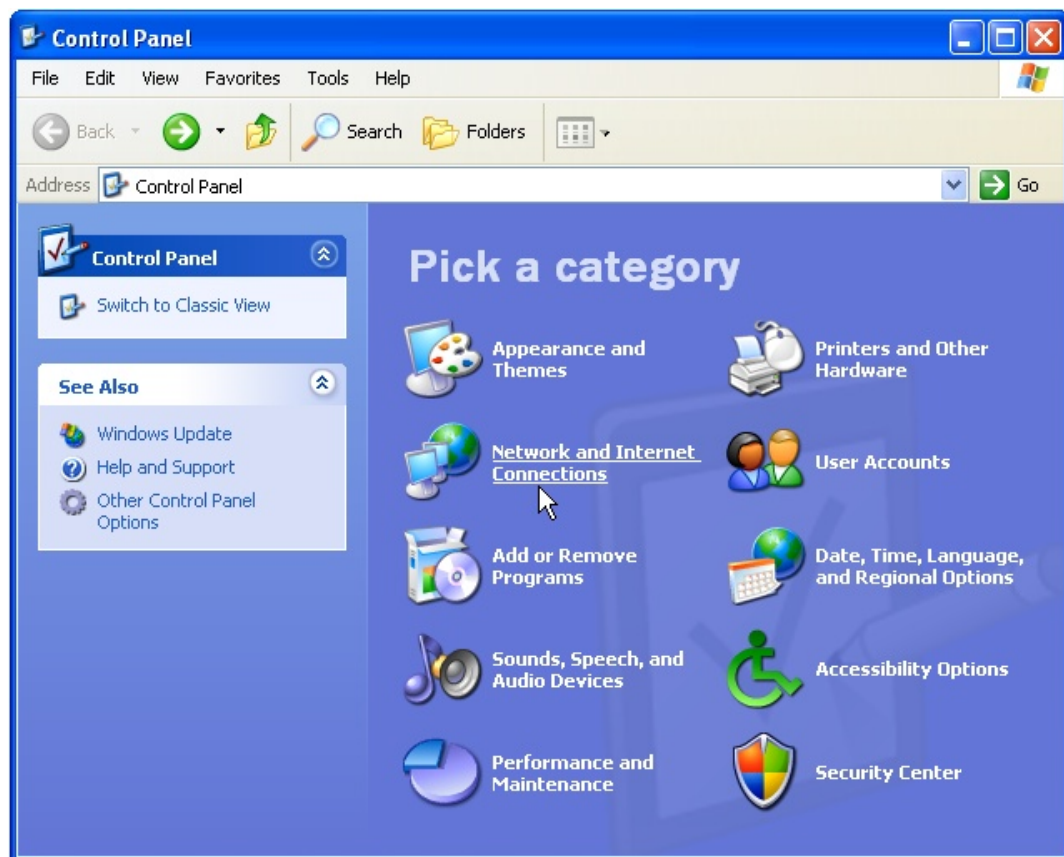


## 4. Dial-Up Connection

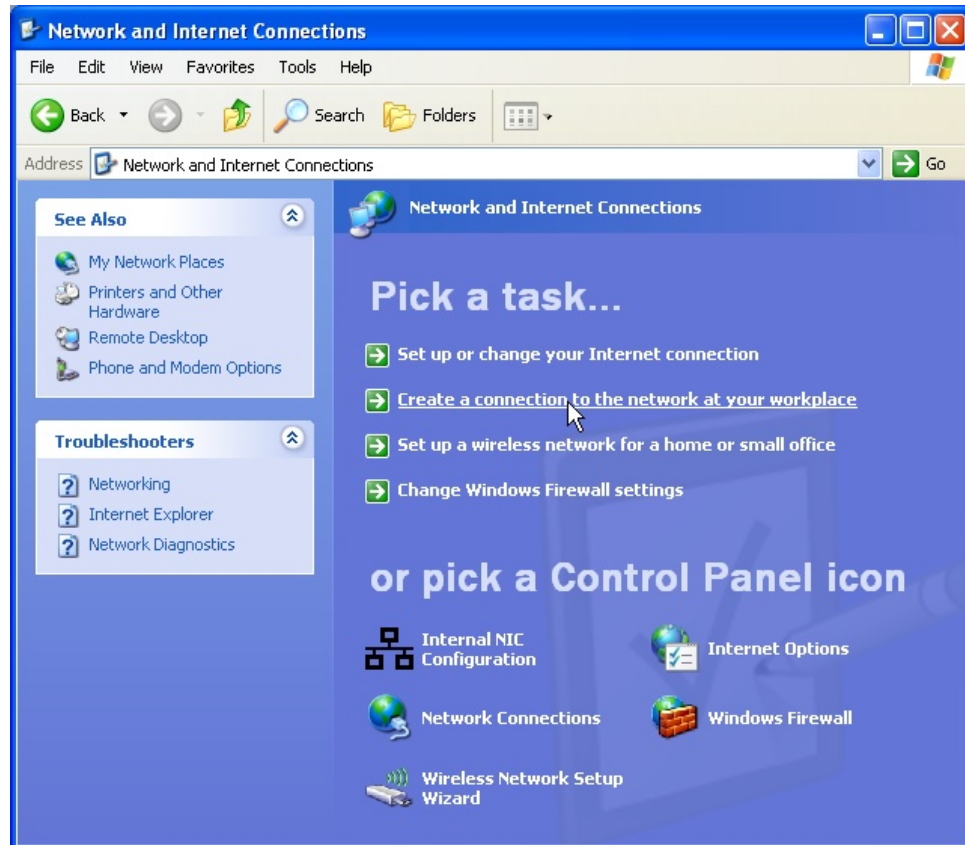
### 4.1. Creation of dialup connection on HSPA USB Modem port

To create a Dial-Up connection:

1. Click on Start->Control Panel. Then click on "Network and Internet connections" as shown in the following picture.



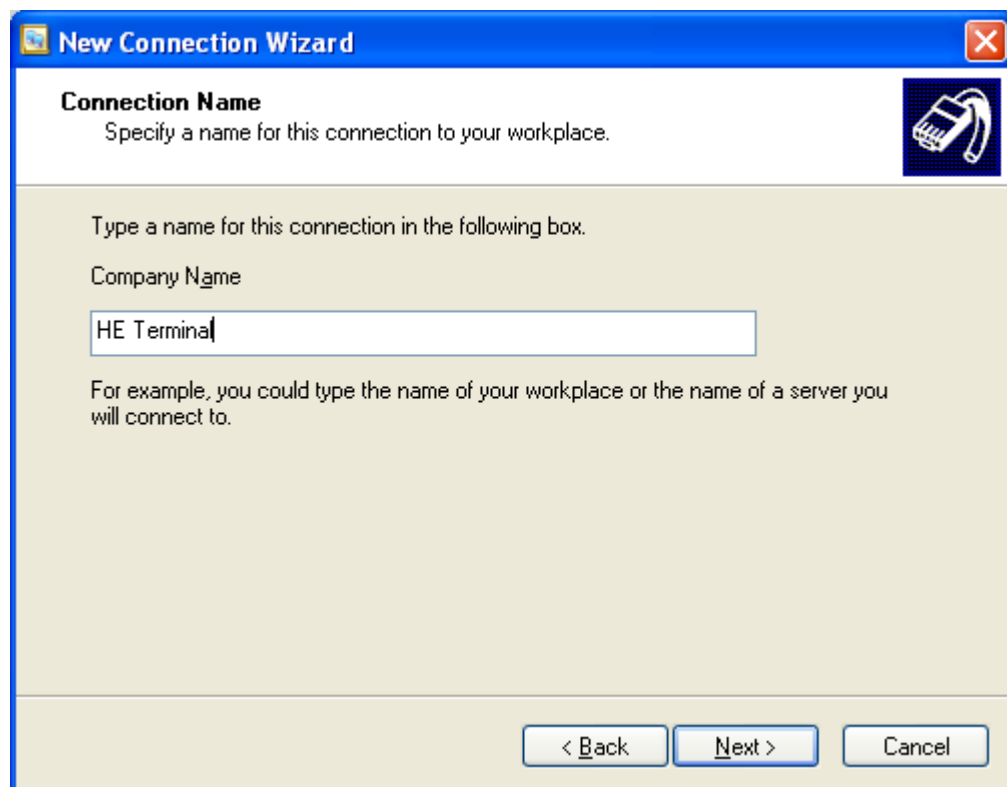
- Click on "Create a connection to the network at your workspace"



- Tick "Dial-up connection" checkbox, then click "Next".

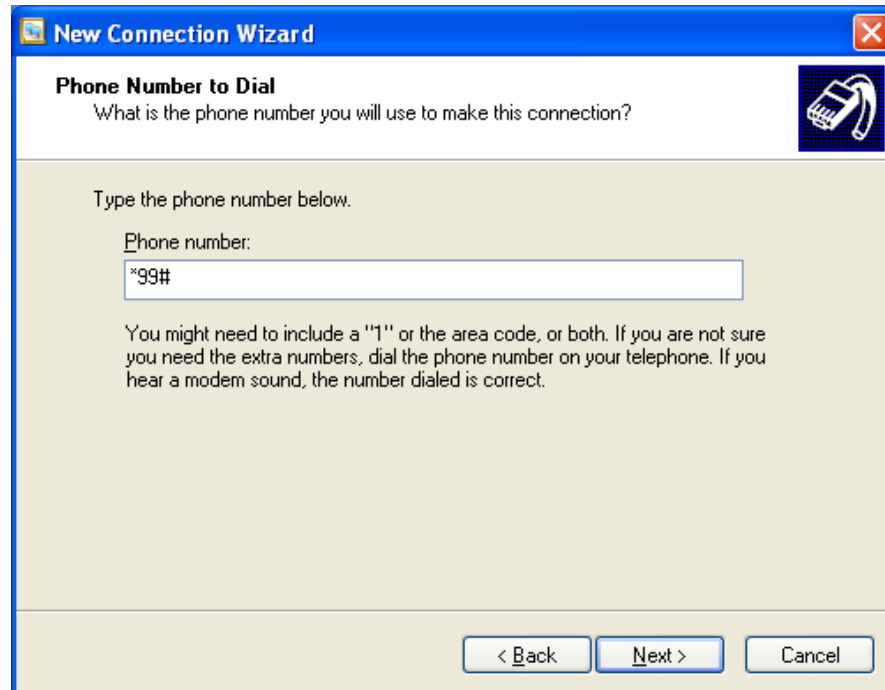


4. Check the "Modem – Telit Mobile Highspeed Modem" then click "Next" checkbox.
5. Type a name for the new connection then click "Next"





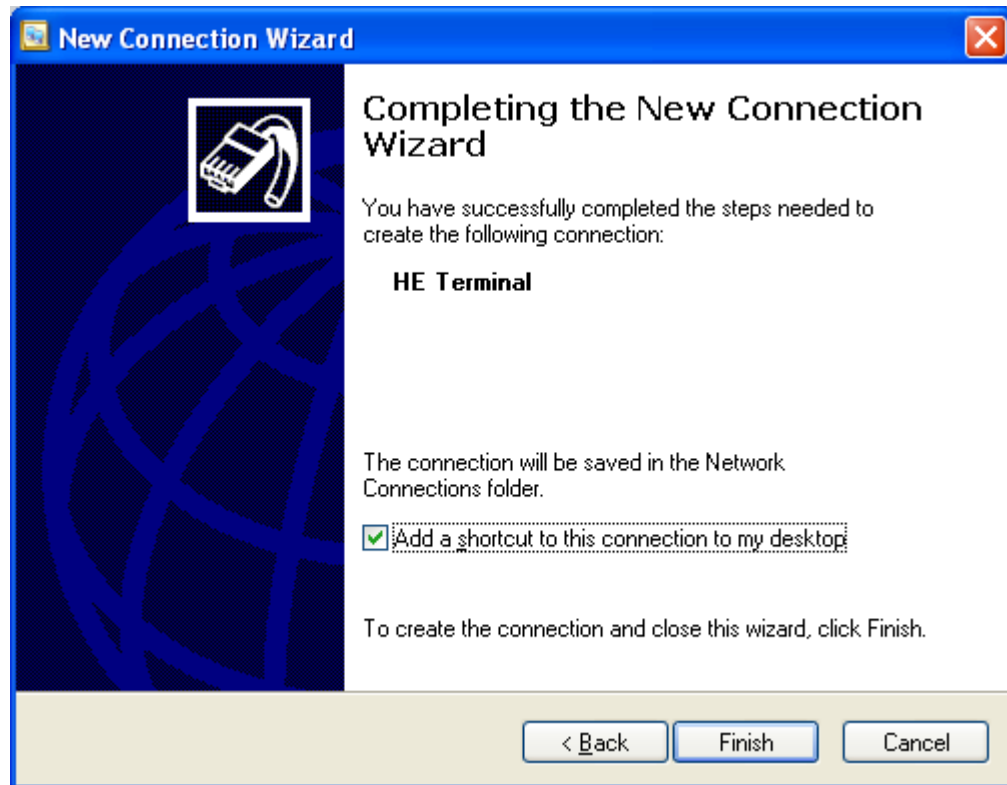
6. Type the phone number “\*99#” then click “Next”.



7. Tick “Do not use my smart card” radio button then click “Next”

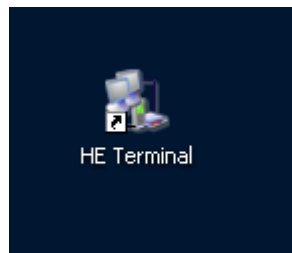


8. Check "Add a shortcut..." checkbox then Click "Finish" to complete the procedure.



## 4.2. Connect using Dial-Up (USB mode)

To connect using the Dial-Up click twice on the icon in the desktop,

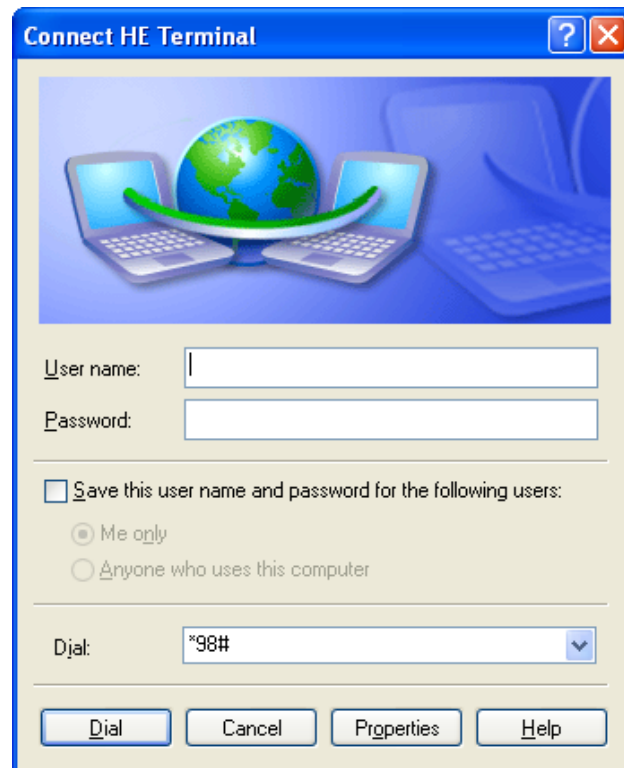


or click Start→Connect to→HE Terminal

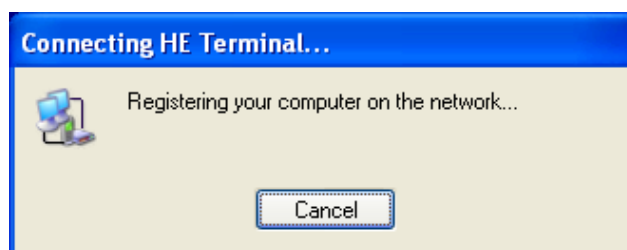
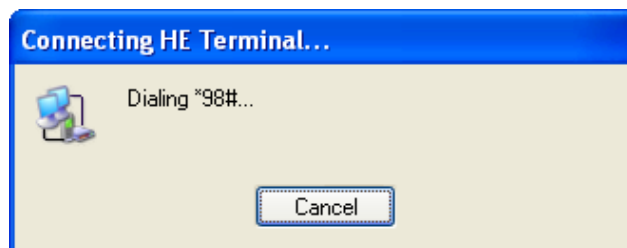


Click "Dial" in "Connect HE Terminal" window





The windows below should appear, and after them the connection is active.



Browse the Internet to check that connection is available.



## 5. Document History

Revision	Date	Changes
0	2011-08-30	First issue
1	2011-09-23	HE910 support has been introduced
2	2011-10-03	Modem baud rate update
3	2011-11-03	Beta part for HE910 eliminated

