



Smart Edge . Smart City

Enable the Digital Transformation
in Smart City



X102 SST Driver Installation Step By Step

Step.1 Install Graphic Driver

Download and install

- Graphic Driver: \\pserver\PM\driver\Neu-X\Neu-X102\02_Graphic
- Ignore this step If graphic driver already installed.

Step.2 Ready to Install Intel SST Driver

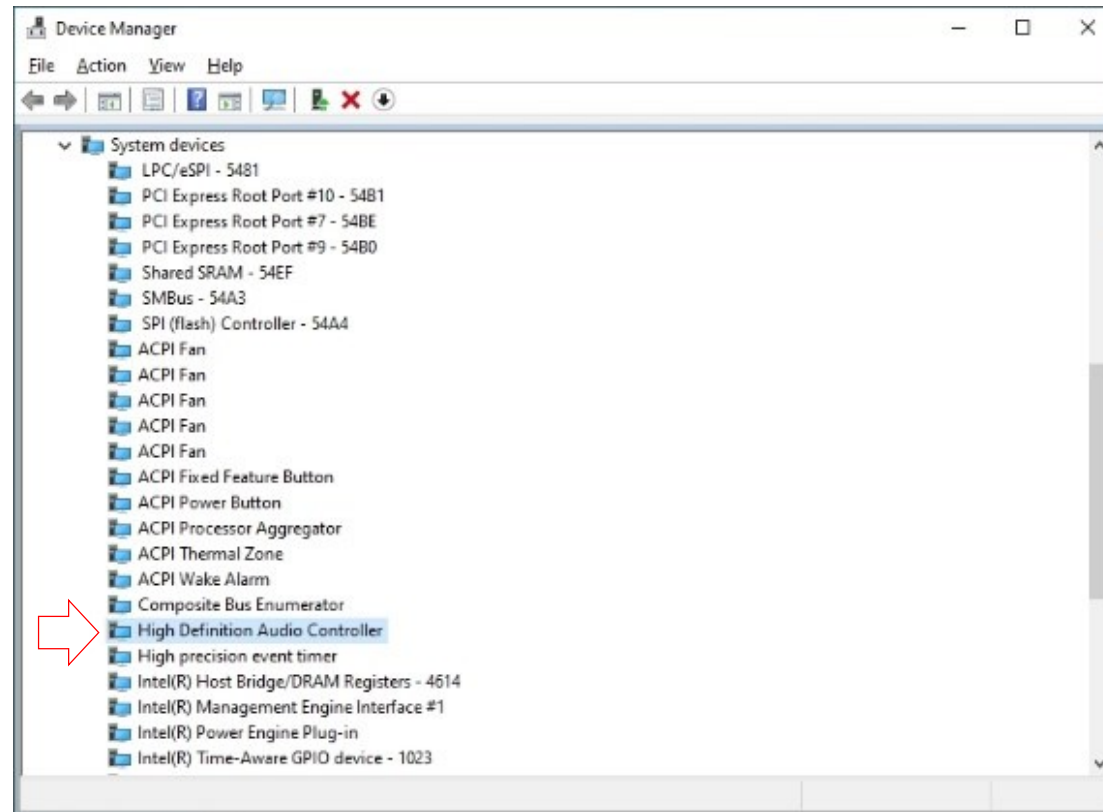


Download SST driver and extract zip file

- Download Intel SST Driver: \\pserver\PM\driver\Neu-X\Neu-X102\06_SST
- Extract zip file

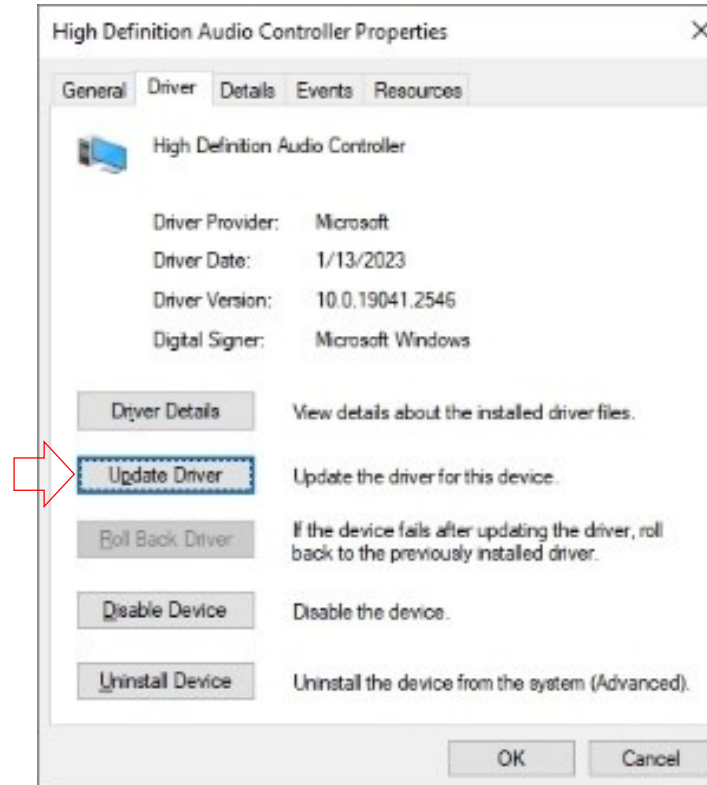
Step.3 Update Driver

Device Manager → System Devices → High Definition Audio Controller



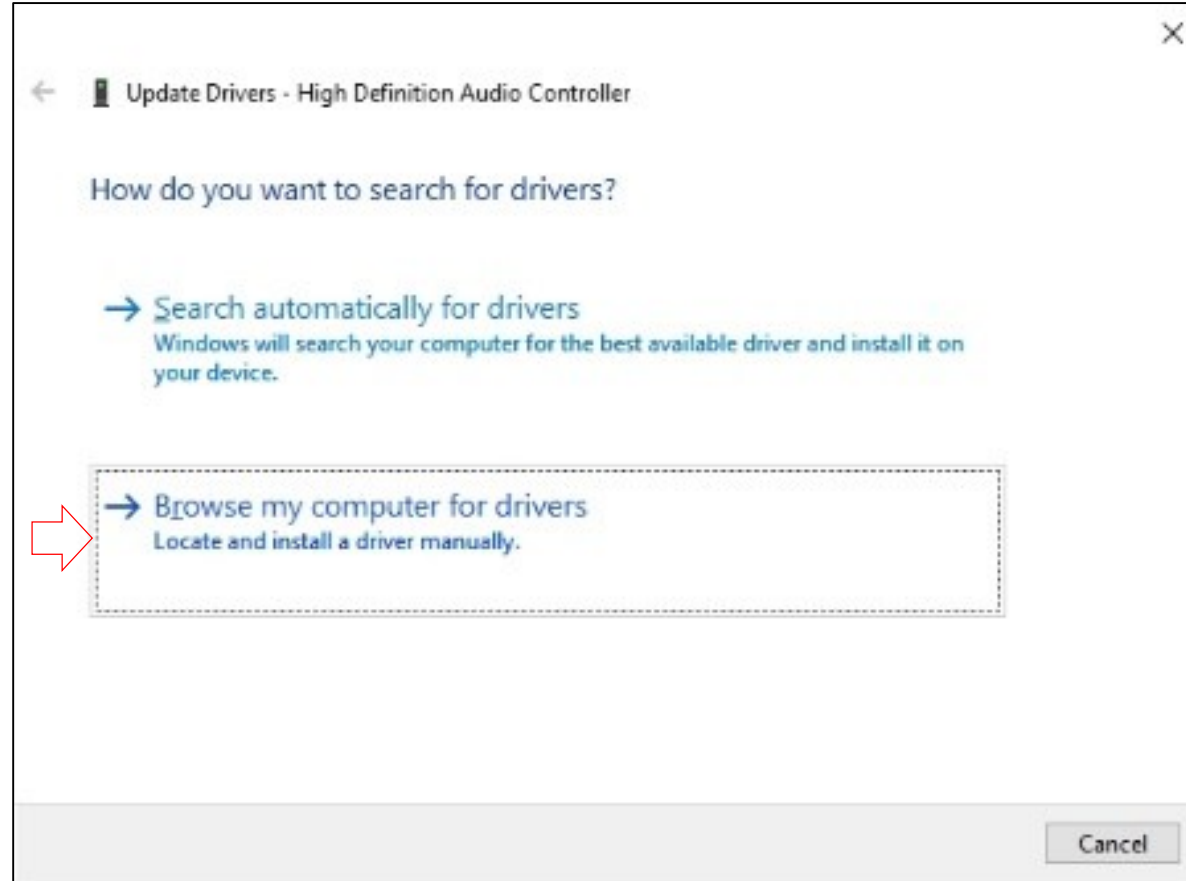
Step.4 Update Driver

Update Driver



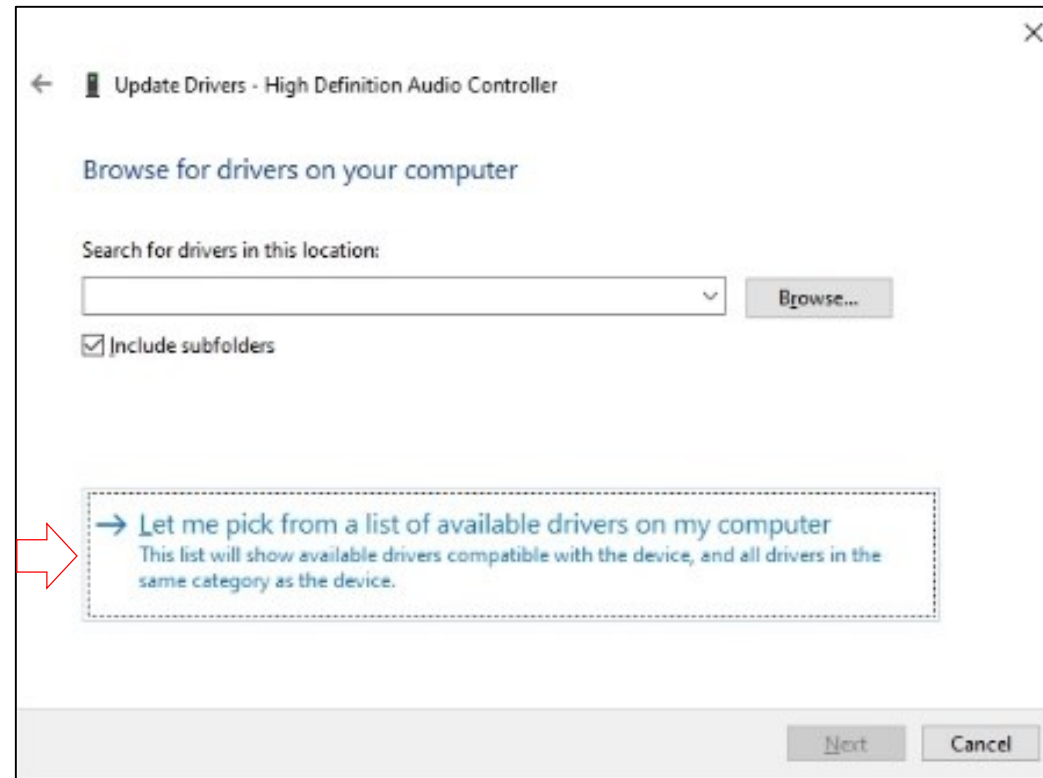
Step.5 Update Driver

Browse driver file



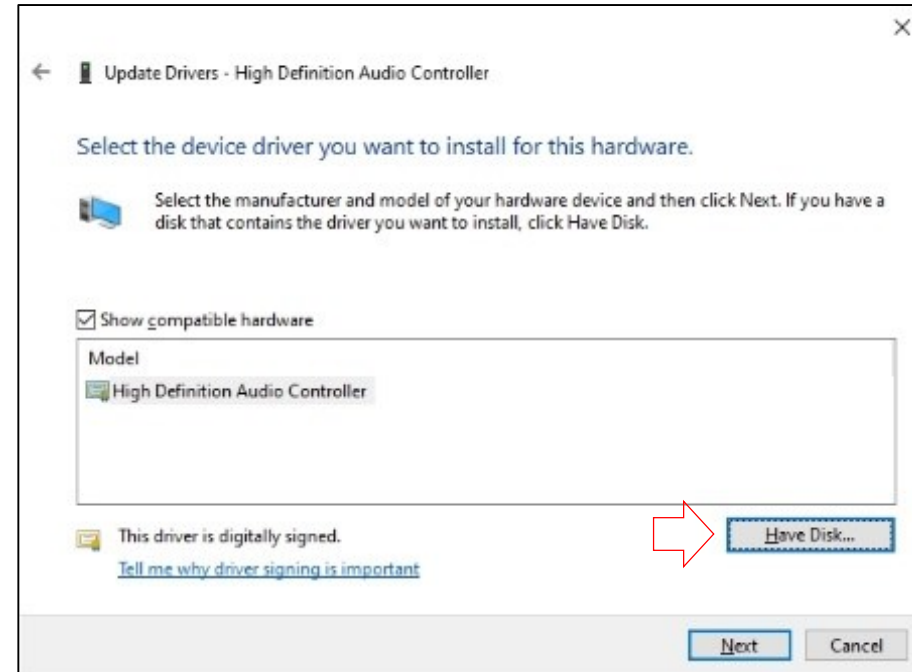
Step.6 Update Driver

Browse driver file



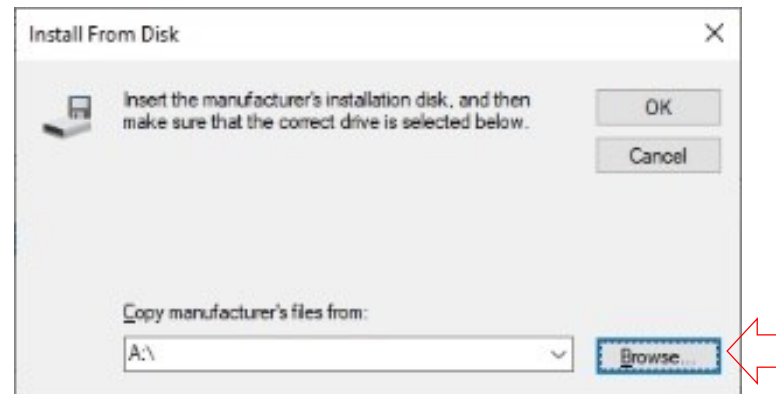
Step.7 Update Driver

Browse driver file



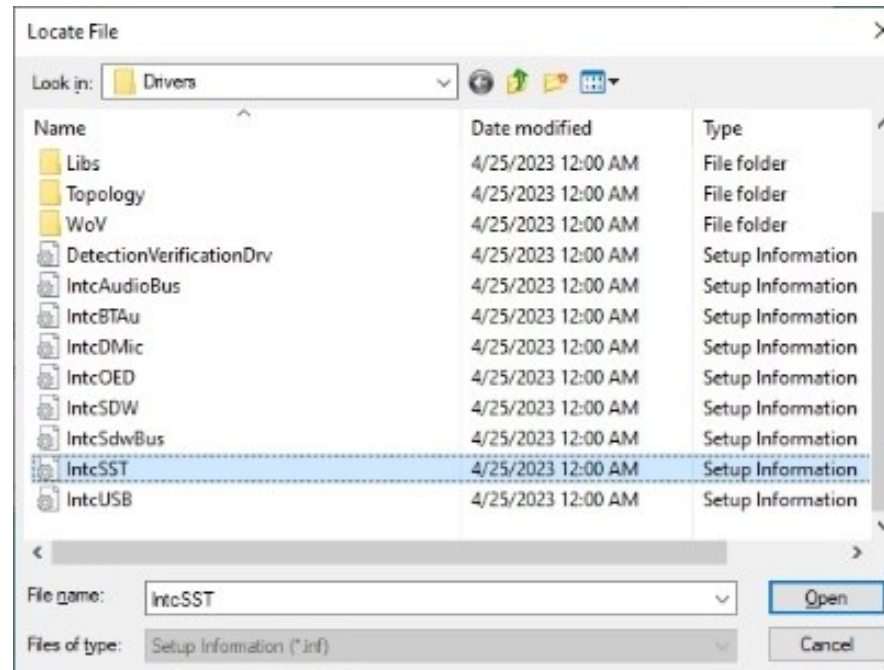
Step.8 Update Driver

Browse driver file



Step.9 Update Driver

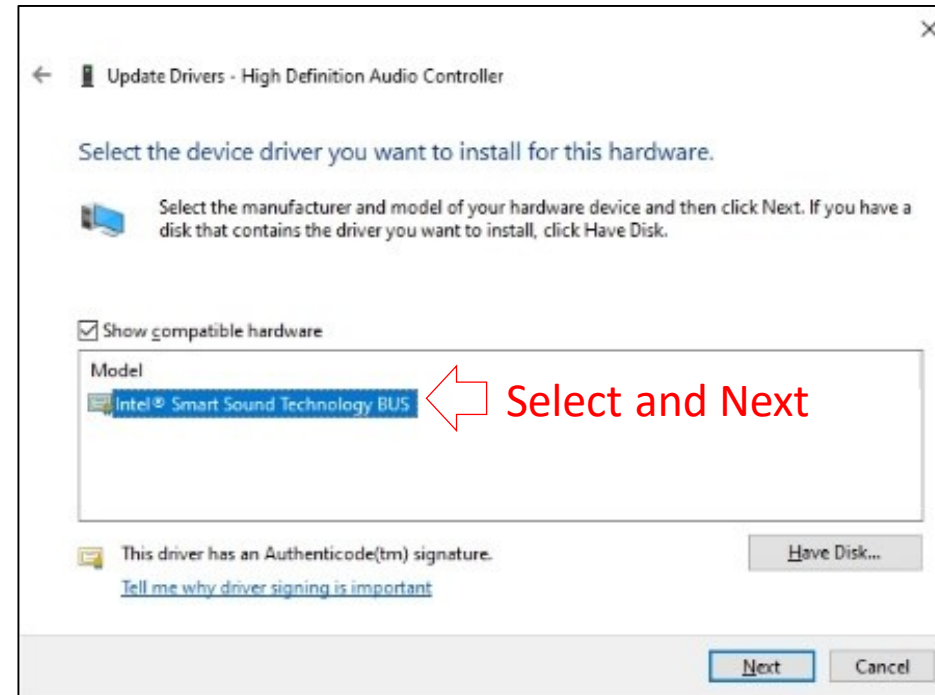
Browse driver file



← Select IntcSST.inf

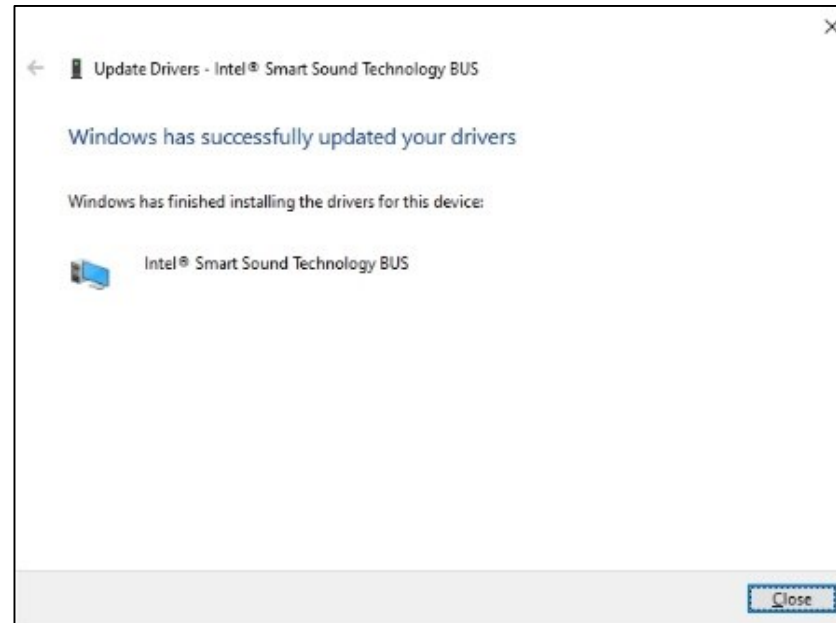
Step.10 Update Driver

Browse driver file



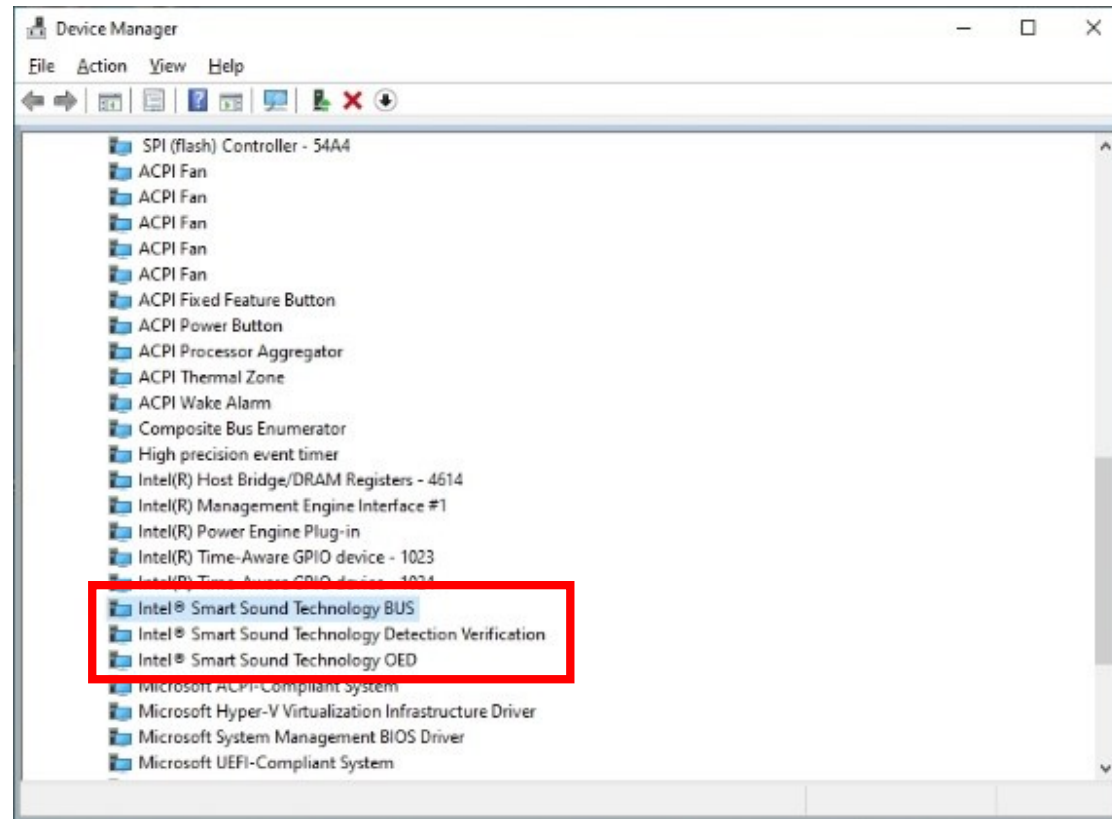
Step.11 Update Driver

Installing Intel SST Driver



Step.12 Update Driver

Find Device Manager → System Devices → Intel Smart Sound Technology



Under System Devices, “Intel® SST Audio Controller” must be present

Step.13 Install Realtek Audio Driver



Download and install

- Audio Driver: \\pserver\PM\driver\Neu-X\Neu-X102\07_Audio

Step.14 Reboot System

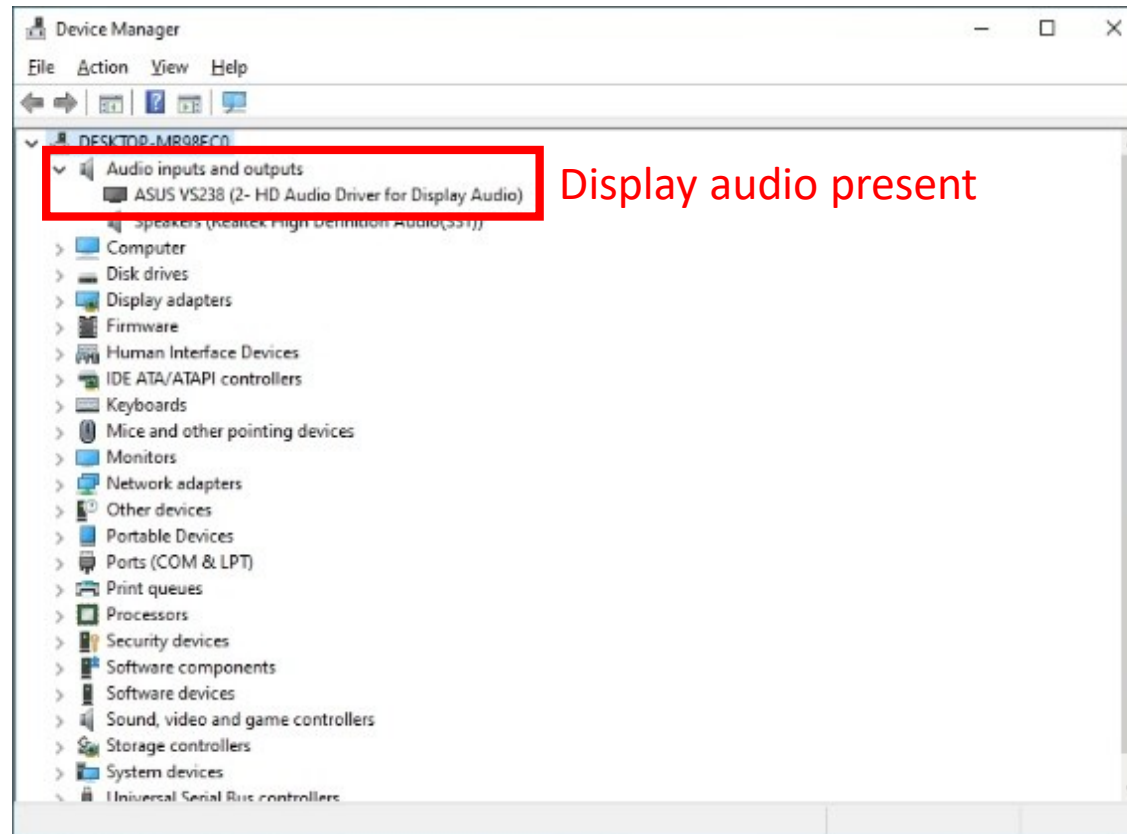
Reboot System



- Do system reboot after driver updated successfully.

Check Display Audio Function

Display audio work fine



Backup

Intel Display Configuration for Alder Lake



Doc#723858 section 9.2



723858_Display_Configuration_for_Alder_Lake_Raptor_Lake_Platform_rev1.0.pdf

Intel Controller

- Intel Advanced Menu → PCH-IO Configuration → HD audio configuration
 - Audio DSP: Enable
 - Audio DSP Compliance Mode: UAA - HDA Inbox/ Intel® Smart Sound Technology (Intel® SST)
- Install Graphics Driver and ISST driver
- Under System Devices 'Intel® SST Audio Controller' must be present (ADSP controller)
- To Check if Codec is present under Controller, Go to View -> Devices by Connection -> Intel® SST Audio Controller -> (Under which the Connected Display's endpoints will be loaded)



Smart Edge . Smart City

Enable the Digital Transformation
in Smart City



Thank You!