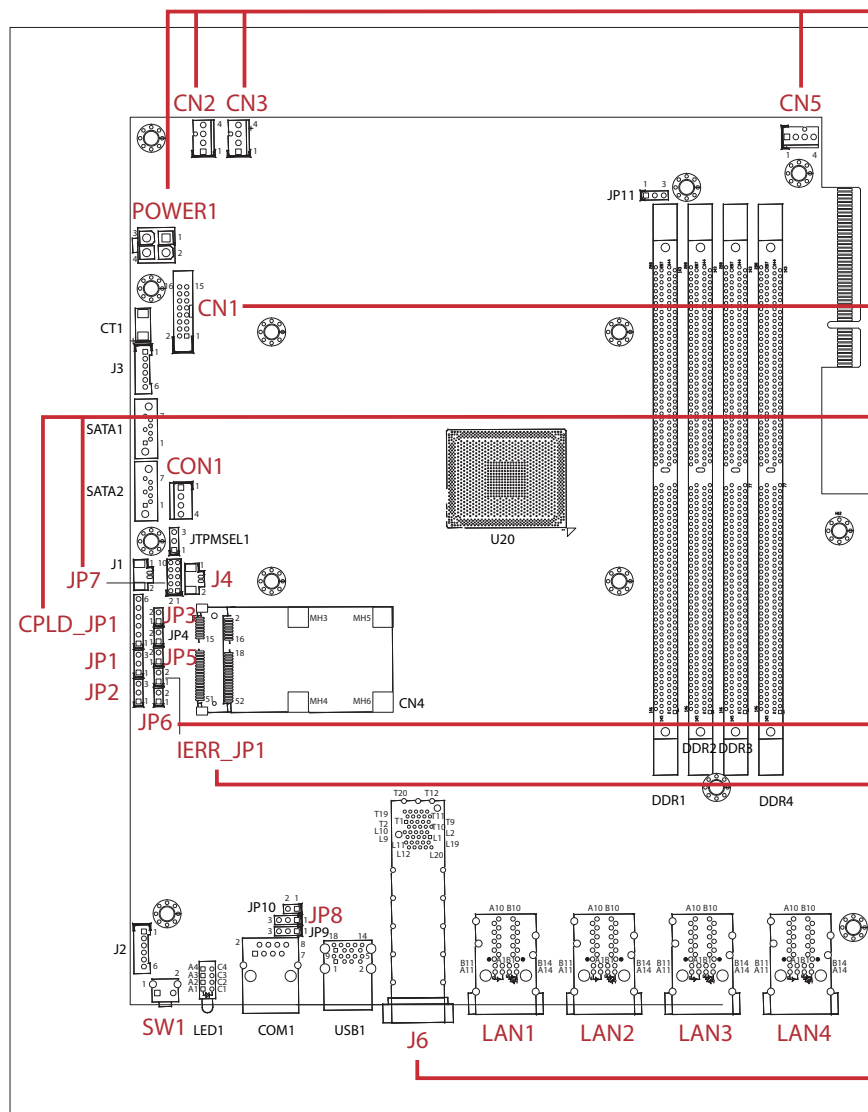


NSA1160 Quick Reference Guide



POWER1: DC-12V Power Connector

Pin	Description	Pin	Description
01	GND	03	DC_IN
02	GND	04	DC_IN

CN2/CN3/CN5: Fan Connector

Pin	Description	Pin	Description
01	GND	03	TACH
02	P12V	04	PWM

CN1: VGA Connector

Pin	Signal	Pin	Signal
01	VGA_RED	02	VGA_GREEN
03	VGA_BLUE	04	NC
05	GND	06	GND
07	GND	08	GND
09	+5V	10	GND
11	NC	12	VGA_DATA
13	VGA_HS	14	VGS_VS
15	VGA_CLK	16	NC

JP7: GPIO

Pin	Description	Pin	Description
01	P3V3	06	CPLD_GPOUT2
02	GND	07	CPLD_GPIN3
03	CPLD_GPIN1	08	CPLD_GPOUT3
04	CPLD_GPOUT1	09	CPLD_GPIN4
05	CPLD_GPIN2	10	CPLD_GPOUT4

CPLD_JP1: CPLD JTAG

Pin	Description
01	P3V3_STBY
02	GND
03	JTAG_TCK
04	JTAG_TDO
05	JTAG_TDI
06	JTAG_TMS

JP6: ME Recover Mode

Pin	Description
NC	Normal (default)
1-2	ME RECOVER MODE

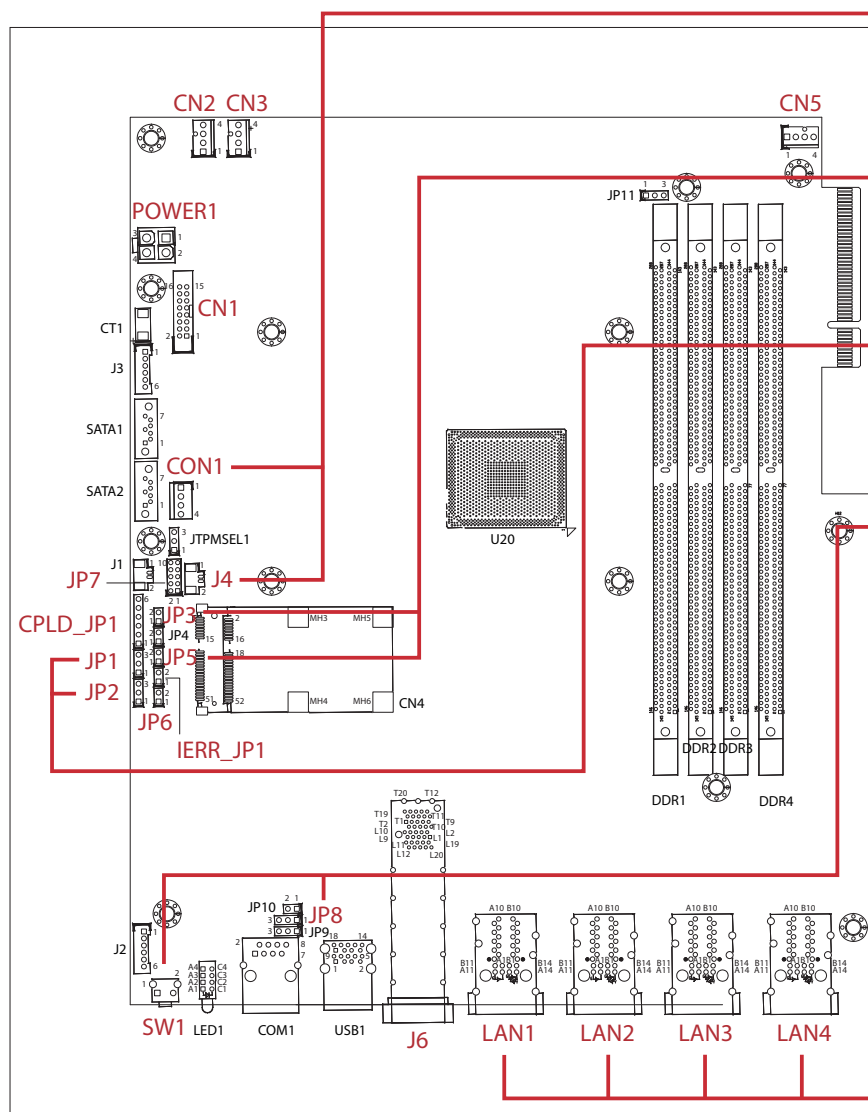
IERR_JP1: Flash Security Override

Pin	Description
01	Flash descriptor security locked (default)
02	Flash descriptor security unlocked - requires external pull-up

J6: LAN Connector

Pin	Signal	Pin	Signal	Pin	Signal	Pin	Signal
T1	GND	T11	GND	L1	GND	L11	GND
T2	TxFault1	T12	1_SFP+_RD-	L2	TxFault2	L12	2_SFP+_RD-
T3	TxDisable1	T13	1_SFP+_RD+	L3	TxDisable2	L13	2_SFP+_RD+
T4	P10G_Sda1	T14	GND	L4	P10G_Sda2	L14	GND
T5	P10G_Scl1	T15	3P3V_SFP1_R	L5	P10G_Scl2	L15	3P3V_SFP2_R
T6	ModABS1_L	T16	3P3V_SFP1_T	L6	ModABS2_L	L16	3P3V_SFP2_T
T7	1_RS0	T17	GND	L7	2_RS0	L17	GND
T8	RxLOS1	T18	1_SFP+_TD+	L8	RxLOS2	L18	2_SFP+_TD+
T9	1_RS1	T19	1_SFP+_TD-	L9	2_RS1	L19	2_SFP+_TD-
T10	GND	T20	GND	L10	GND	L20	GND

NSA1160 Quick Reference Guide



CN1: SATA Power Connector

1	4	Pin	Description	Pin	Description
01	02		P12V	03	GND
02	03		GND	04	P5V

J4: Battery Connector

1	2	Pin	Description
01	02		GND
02	03		VBAT

JP3: System Power Button

1	2	Pin	Description
01	02		PWR_BTN_CAL_N
02	03		GND

JP5: UART Pin Header

1	2	Pin	Description
01	02		UART_TX
02	03		UART_RX

JP1: RTC Clear

1	2	3	Pin	Description
01	02	03		Normal
02	03	01		Clear CMOS

JP2: PMC Clear

1	2	3	Pin	Description
01	02	03		Normal
02	03	01		Clear PMC

SW1: System Reset Button

1	2	Pin	Description
01	02		GND
02	03		RW_SW_RST

JP8: Console CTS Strap

1	2	3	Pin	Description
01	02	03		RTS to CTS
02	03	01		Normal

LAN1/LAN2/LAN3/LAN4: LAN Connector

Pin	Description	Pin	Description
A1	P_LAN2_MDI0P	B1	P_LAN1_MDI0P
A2	P_LAN2_MDI0N	B2	P_LAN1_MDI0N
A3	P_LAN2_MDI1P	B3	P_LAN1_MDI1P
A4	P_LAN2_MDI1N	B4	P_LAN1_MDI1N
A5	P_LAN2_MDI2P	B5	P_LAN1_MDI2P
A6	P_LAN2_MDI2N	B6	P_LAN1_MDI2N
A7	P_LAN2_MDI3P	B7	P_LAN1_MDI3P
A8	P_LAN2_MDI3N	B8	P_LAN1_MDI3N
A9	GND	B9	GND
A10	GND	B10	GND
A11	P3V3	B11	P3V3
A12	PORT2_ACT_N	B12	PORT1_ACT_N
A13	PORT2_L100_N	B13	PORT1_L100_N
A14	PORT2_L1000_N	B14	PORT1_L1000_N
MH1	CGND	MH4	CGND
MH2	CGND	MH5	CGND
MH3	CGND	MH6	CGND