



NexAIoT Co., Ltd.

IoT Studio

Quick Start Guide

NexAIoT Co., Ltd.

Document Version: v2.1

Published September 2019

www.nexaiot.com

CONTENTS

Preface	1
Disclaimer	1
Acknowledgements	1
Revision History.....	1
Chapter 1: Using IoT Studio	2
Prerequisite:	2
1.1 Installing IoT Studio.....	2
1.2 Launching IoT Studio Utility.....	7
Chapter 2: IoT Studio Utility Basics.....	9
2.1 Status	11
2.2 Configuration	13
2.3 License.....	15
2.4 About	19

PREFACE

Disclaimer

The information in this document is subject to change without prior notice and does not represent commitment from NexAloT Co., Ltd. However, users may update their knowledge of any product in use by constantly checking its manual posted on our website: <https://www.nexaiot.com>. NexAloT shall not be liable for direct, indirect, special, incidental, or consequential damages arising out of the use of any product, nor for any infringements upon the rights of third parties, which may result from such use. Any implied warranties of merchantability or fitness for any particular purpose is also disclaimed.

Acknowledgements

The IoT Studio is a trademark of NexAloT Co., Ltd. All other product names mentioned herein are registered trademarks of their respective owners.

Revision History

Version	Date	Description
v2.0	February 2019	Initial release
v2.1	September 2019	<ol style="list-style-type: none">1. Released IoT Studio version 2.20.035.2. Added online or offline activation in License page.3. Modified IoT Studio version number to 2.20.035 in License page.

CHAPTER 1: USING IoT STUDIO

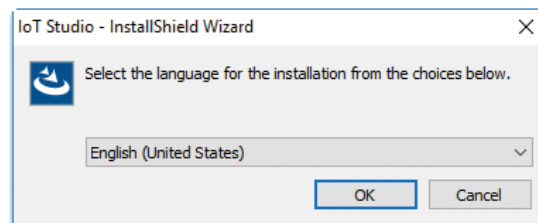
Prerequisite:

Check the operating system requirement before installing IoT Studio. The following are the supported operating systems:

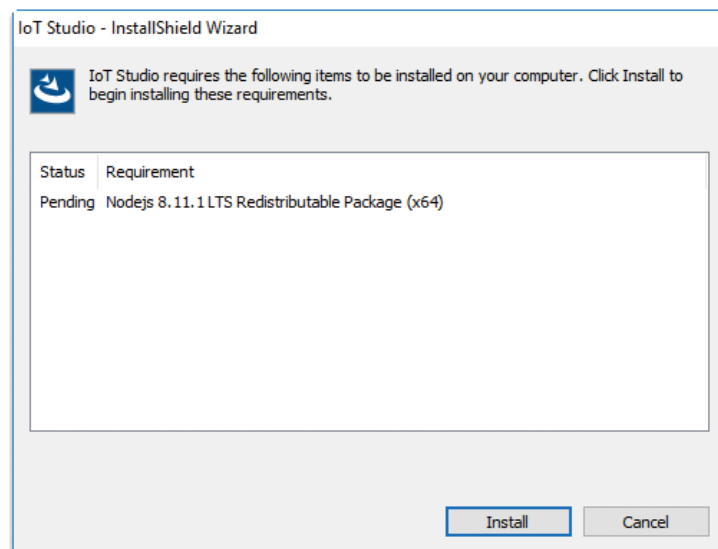
- Microsoft Windows 10, Windows 8.1, Windows 7 with Service Pack 1, Windows Embedded Standard 7 with Service Pack 1
- Microsoft Windows Server 2016, Windows Server 2012 R2

1.1 Installing IoT Studio

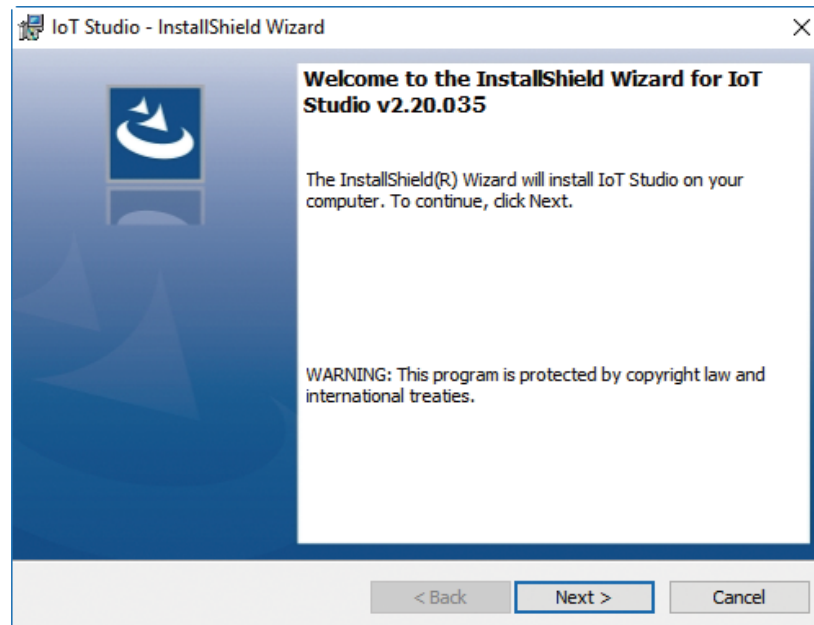
1. Double click on the installation file of IoT Studio, select the language for the installation from the drop-down menu, and click **OK**.



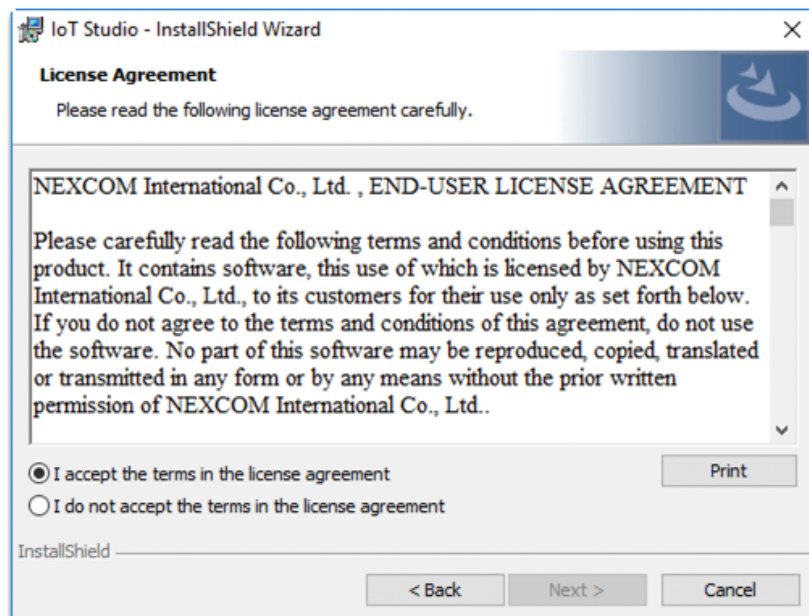
Note: If your system does not meet the requirements, the installation wizard will prompt you to install the required packages. Click **Install** to proceed.



- The installation wizard will prepare the setup process. Click **Next** to proceed, or click **Cancel** to quit.



- Check the **I accept the terms in the license agreement** option, and click **Next** to proceed.



4. Enter the user information and the **Serial Number**.

The screenshot shows the 'Customer Information' dialog box of the IoT Studio - InstallShield Wizard. The title bar reads 'IoT Studio - InstallShield Wizard'. The main heading is 'Customer Information' with the instruction 'Please enter your information.' Below this, there are three input fields: 'User Name:', 'Organization:', and a three-part serial number field (represented by three boxes separated by dashes). To the right of the serial number field is a checked checkbox labeled 'Trial Version'. At the bottom of the dialog, there are three buttons: '< Back', 'Next >', and 'Cancel'. The 'Next >' button is highlighted with a blue border. The 'InstallShield' logo is visible in the bottom left corner.

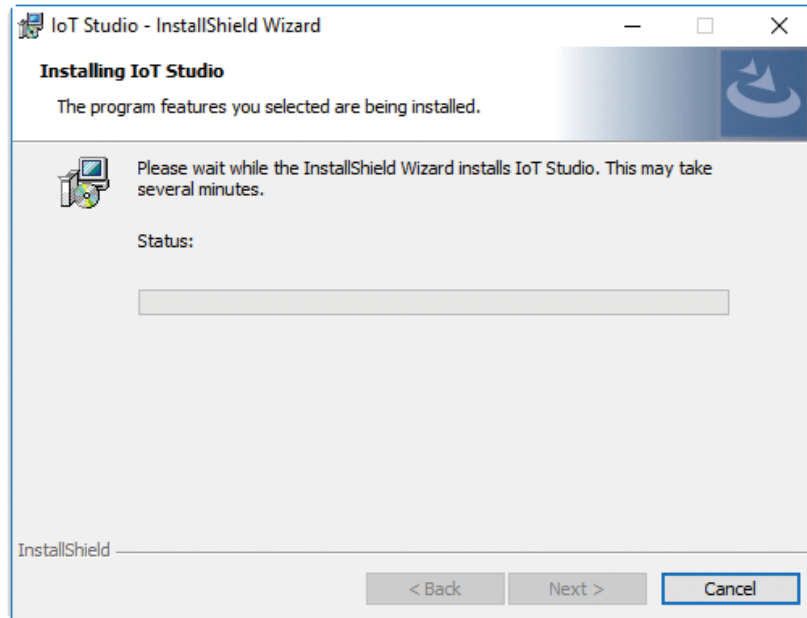


Note: You can check the **Trial Version** option and enter the serial number later. The entered product key will introduce a respective edition of IoT Studio displayed on the title of the GUI.

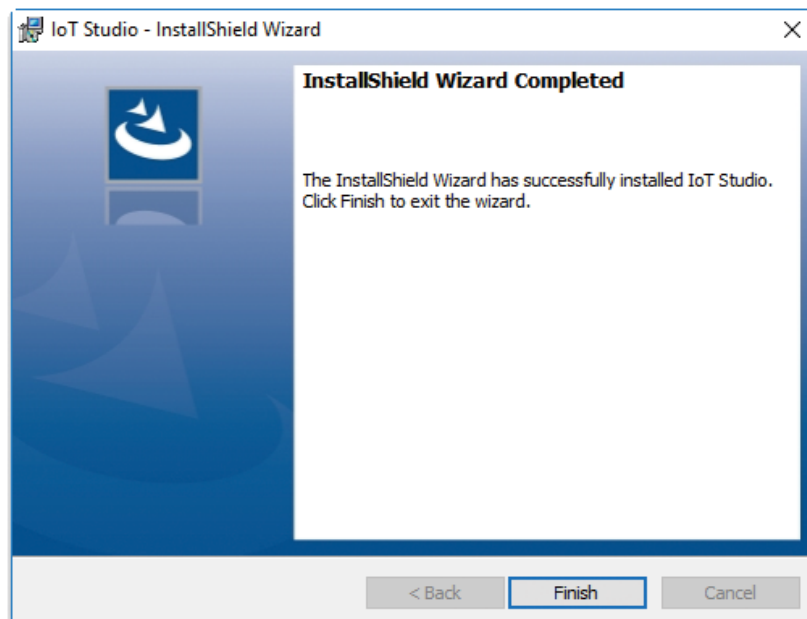
5. Click **Install** to begin installation.

The screenshot shows the 'Ready to Install the Program' dialog box of the IoT Studio - InstallShield Wizard. The title bar reads 'IoT Studio - InstallShield Wizard'. The main heading is 'Ready to Install the Program' with the instruction 'The wizard is ready to begin installation.' Below this, there is a paragraph: 'Click Install to begin the installation. If you want to review or change any of your installation settings, click Back. Click Cancel to exit the wizard.' At the bottom of the dialog, there are three buttons: '< Back', 'Install', and 'Cancel'. The 'Install' button is highlighted with a blue border. The 'InstallShield' logo is visible in the bottom left corner.

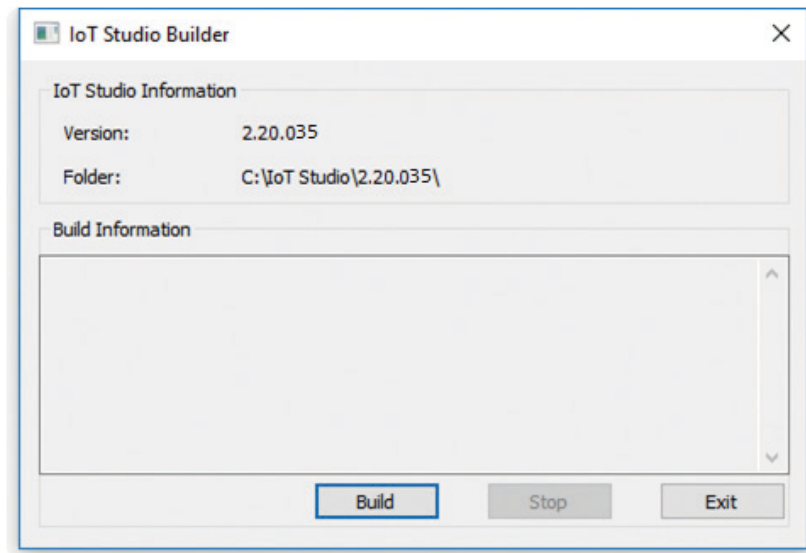
6. The installation will begin and may take a while.



7. Once completed, click **Finish** to exit the installation wizard.



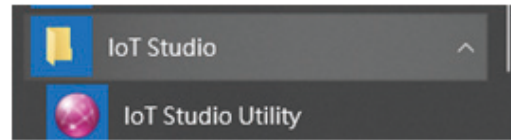
- You will then be prompted to engage in IoT Studio Builder. Click **Build** to start the IoT Studio building process.



Note: If you click **Exit**, you can start the IoT Studio building process in IoT Studio Utility. Only by going over the IoT Studio building process will IoT Studio services become available.

1.2 Launching IoT Studio Utility

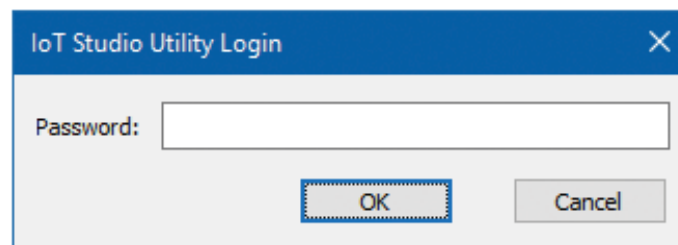
Once installed, you should be able to find the program named **IoT Studio Utility** in the **All Programs** list as shown.



1. Click on the icon or **IoT Studio Utility** to launch IoT Studio Utility.

**Actual location varies from operating systems. The screenshot above depicts the program in Windows 10.*

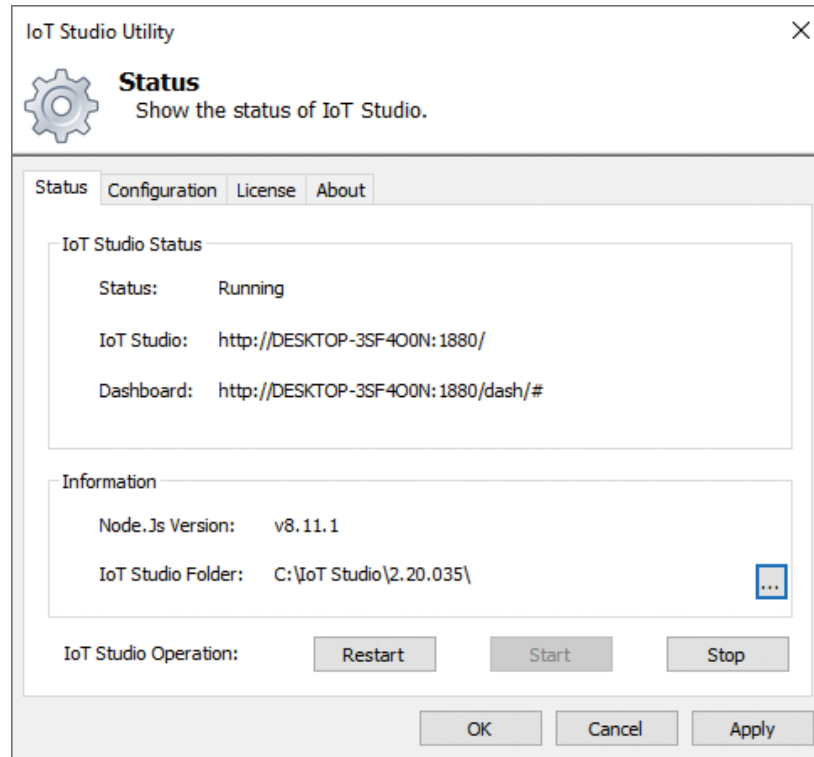
2. Enter the password in the respective field and click **OK**.



Note:

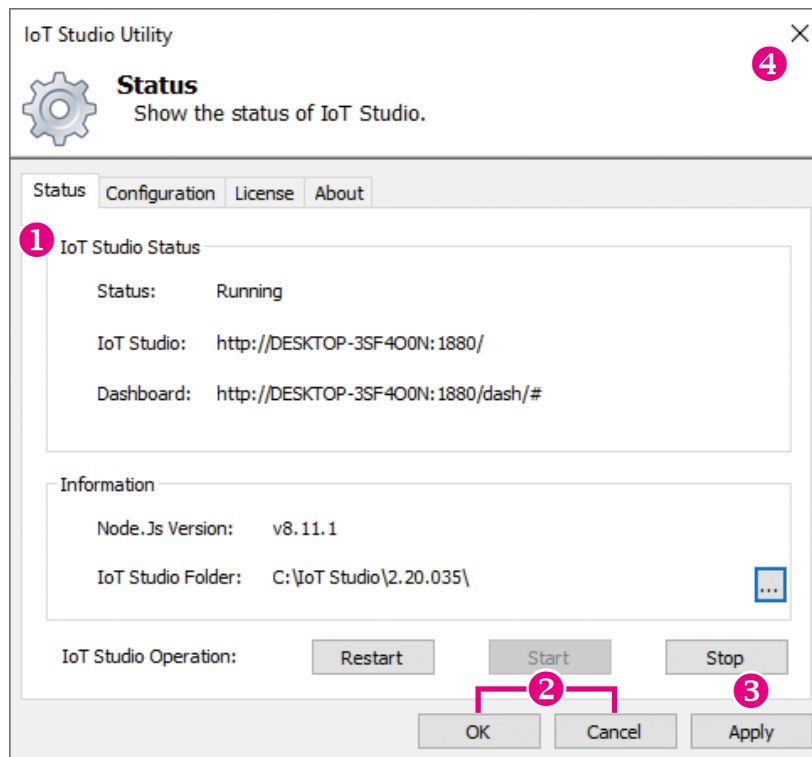
1. Use the default Password: *0000* to log in if you are logging in for the first time.
2. Remember to change the password frequently and keep it in a safe place to avoid hacking. Refer to *2.3 License* for setting the password.

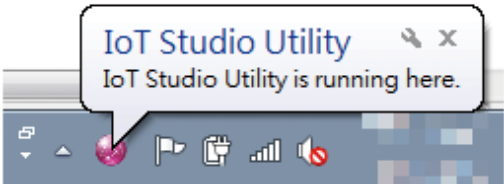
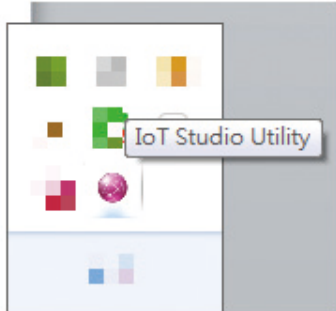
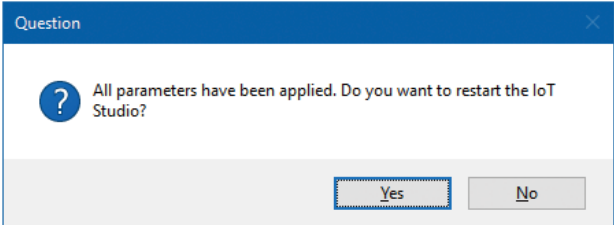
3. The GUI of IoT Studio Utility will be displayed on the screen.



CHAPTER 2: IoT STUDIO UTILITY BASICS

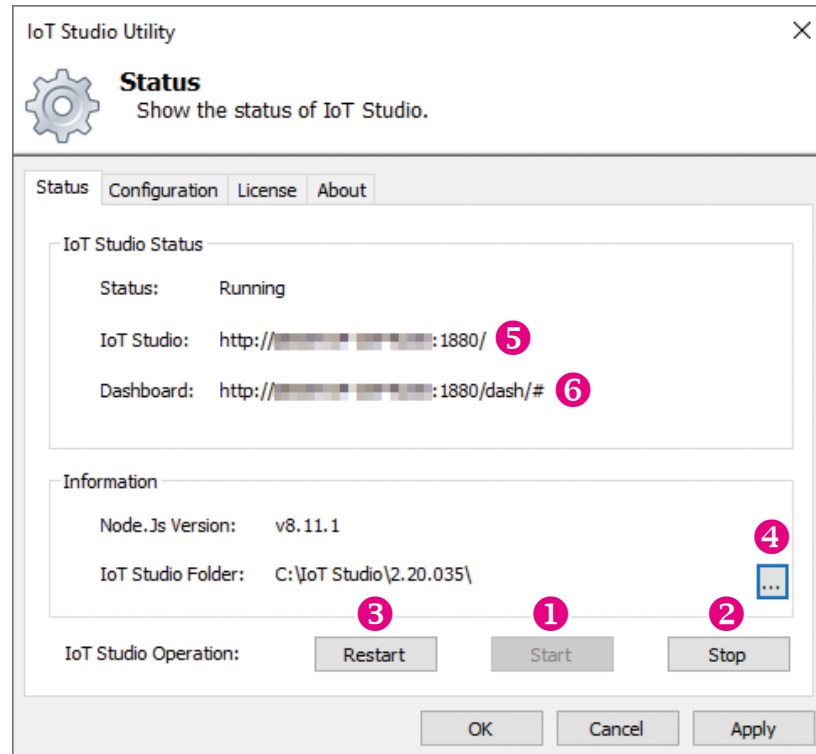
NEXCOM IoT Studio Utility consists 4 pages of information and menus for server status and configurable parameters to help you set up the back-end services that IoT Studio provides. Simply click on the respective tab for further configuration purposes with IoT Studio Utility.

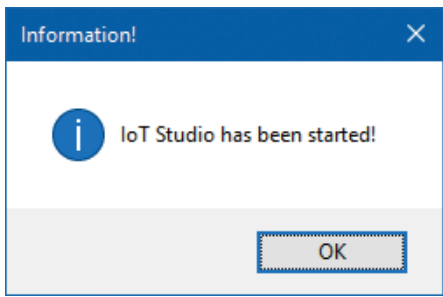


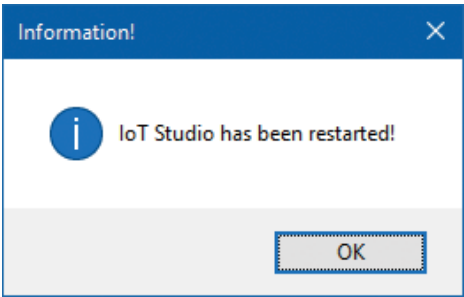
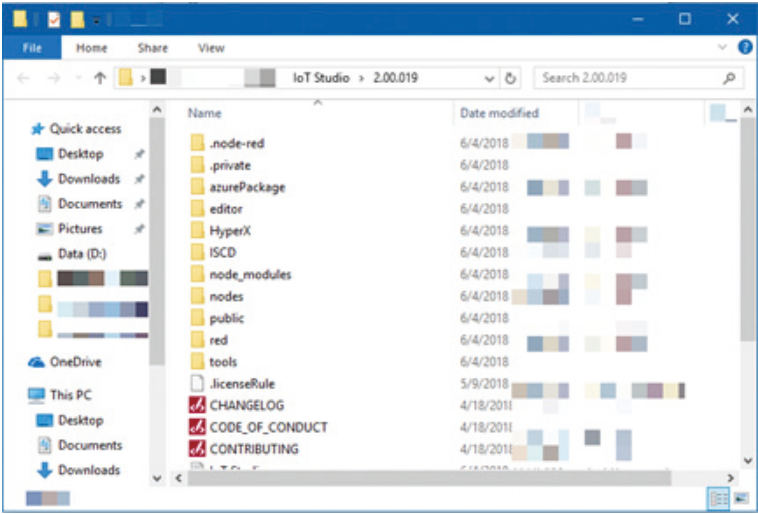
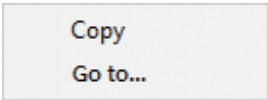
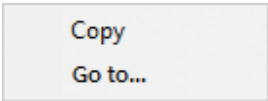
Item	Name	Description
1	Page content	Depicts IoT Studio Status, configurations, and information on individual pages.
2	OK/Cancel	<p>Click OK or Cancel to hide the GUI in the background.</p>  <p>To bring the GUI back to the screen, click on Show hidden icons in the taskbar, and click on the icon of IoT Studio Utility. A message will prompt you to enter the password.</p> 
3	Apply	<p>Click Apply to make the configured parameters take effect. A message will prompt you with the option to restart.</p> 
4	X	Click on the X button to exit IoT Studio Utility.

2.1 Status

The Status page displays brief information about the current status. When the IoT Studio Utility is launched, the service is initially stopped by default. Once IoT Studio is up and running, the connection addresses (URLs) for **IoT Studio:** and **Dashboard:** will be displayed respectively.



Item	Name	Description
1	Start	Click Start to get the service running. 
2	Stop	Click Stop to stop the service.

Item	Name	Description
3	Restart	<p>Click Restart to stop and start the service.</p> 
4	...	<p>Click ... to browse the IoT Studio folder in the file explorer.</p> 
5	IoT Studio URL	<p>Right click on the URL and select Copy to duplicate the URL to the clipboard or Go to... to launch the page in the web browser directly.</p> 
6	Dashboard URL	<p>Right click on the URL and select Copy to duplicate the URL to the clipboard or Go to... to launch the page in the web browser directly.</p> 

2.2 Configuration

The configuration page allows you to configure all affiliated settings of connections and user authentications. You can edit the settings and save them by clicking **Apply** at the bottom of the user interface. The settings are applied once the service has been restarted.

IoT Studio Utility

Configuration
Configure the IoT Studio service.

Status Configuration License About

IoT Studio

1 Http Port: 1880

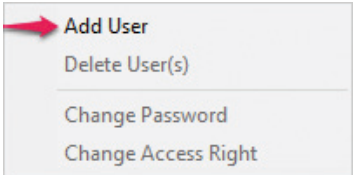
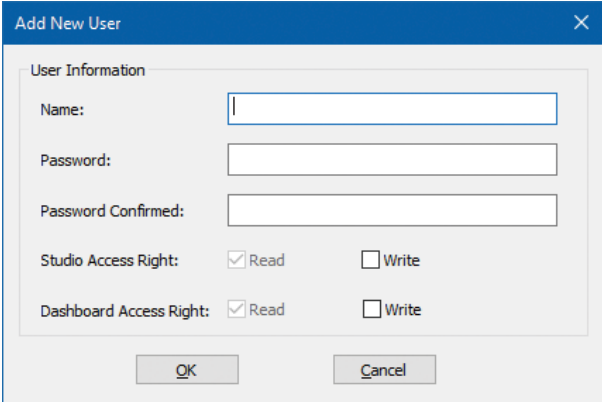
User Permission

Name: admin Password: Reset 2

#	Name	Studio	Dashboard
01	user	Read	Read

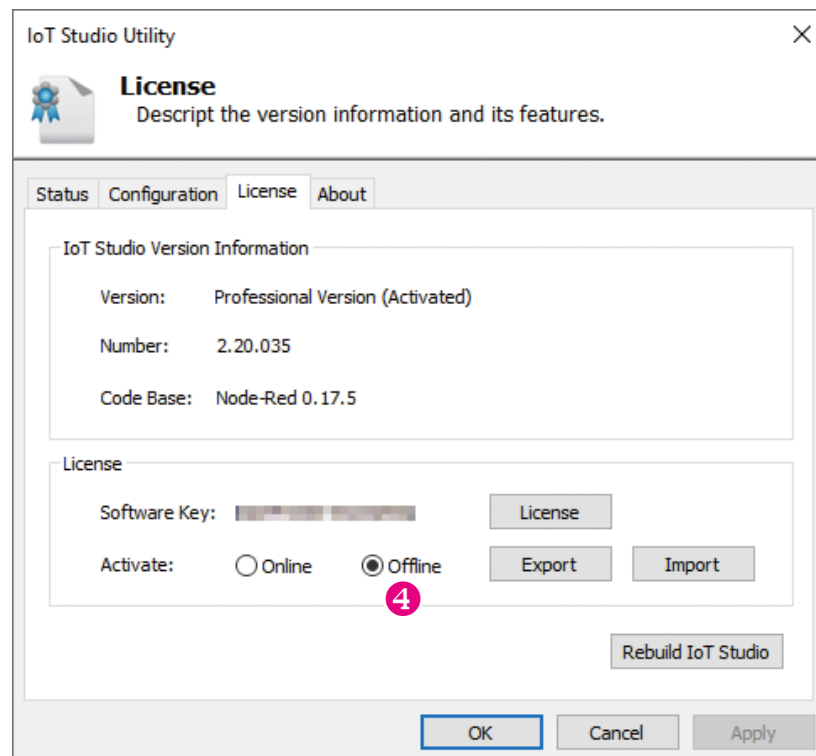
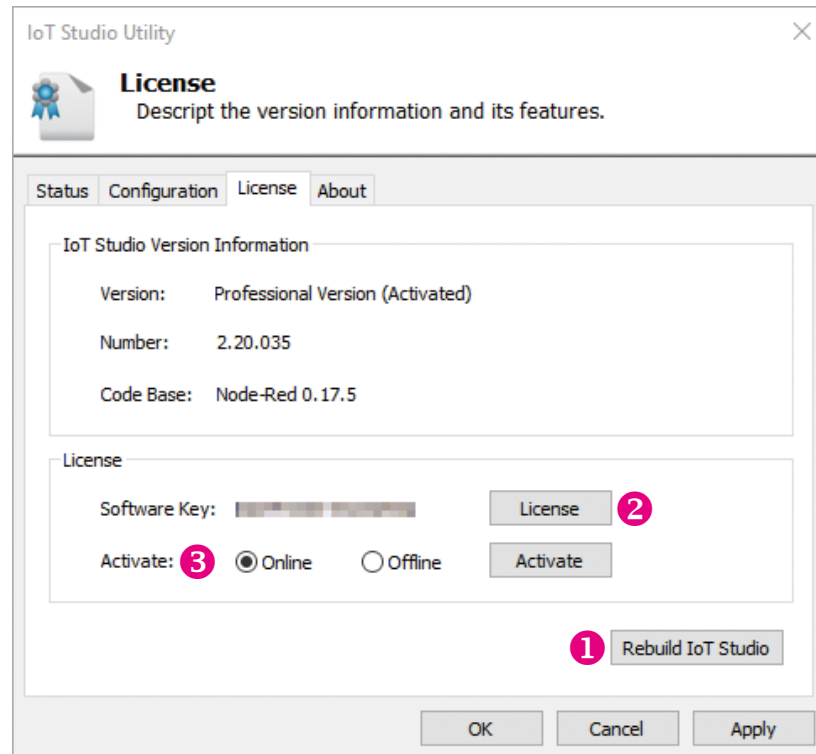
3

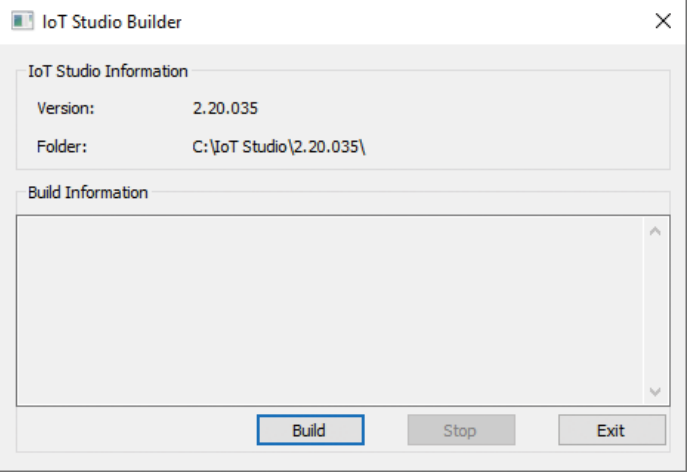
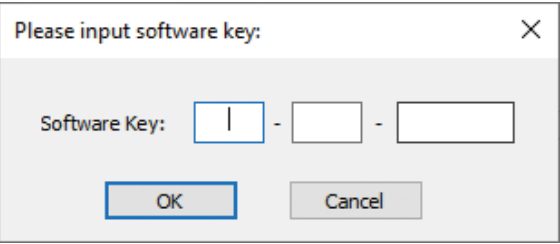
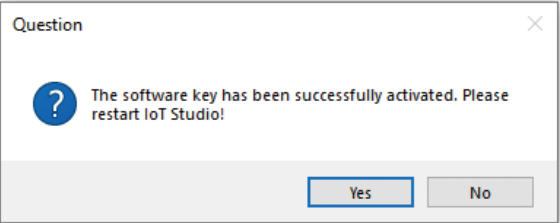
OK Cancel Apply

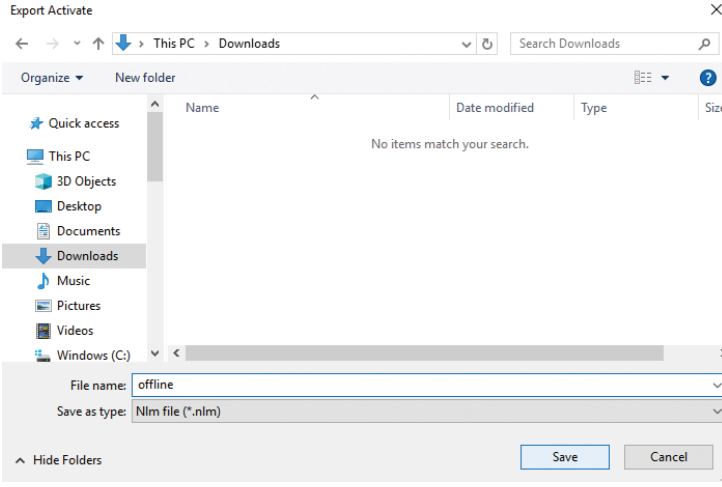
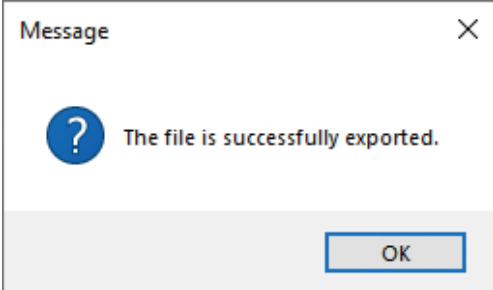
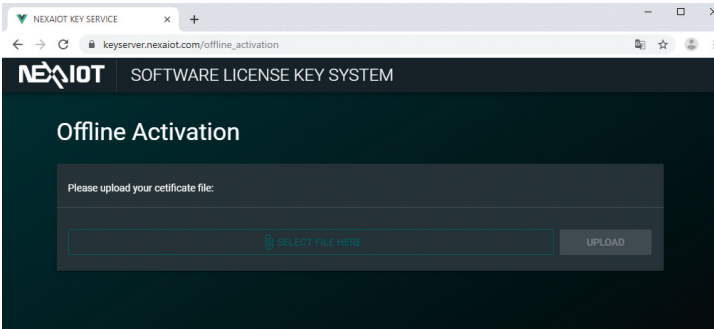
Item	Name	Description
1	Port	Enter a number in the Port field to set the dedicated port for the URL.
2	Reset	Click Reset to change the password of the Administrator .
3	User Permission	<p>Right click on the table in User Permission to Add a user, Delete one or multiple users, Change Password of a user, and Change Access Right of a user.</p> <p>Note: Press and hold the Shift key and click on the name of the user to select multiple users.</p>  <p>Select Add User in the pop-up window to add a new account. Enter the required text in the respective fields, and select the required Access Right option by selecting the respective checkboxes. Click OK when done.</p> 

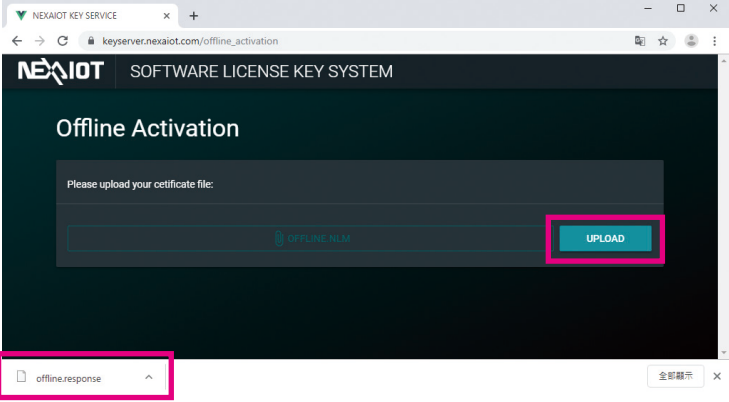
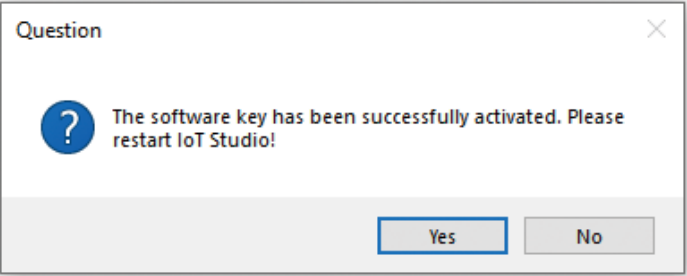
2.3 License

The License page displays the **IoT Studio Version Information** and the **Product details**. Also, this page allows you to rebuild IoT Studio and register the product key online or offline.



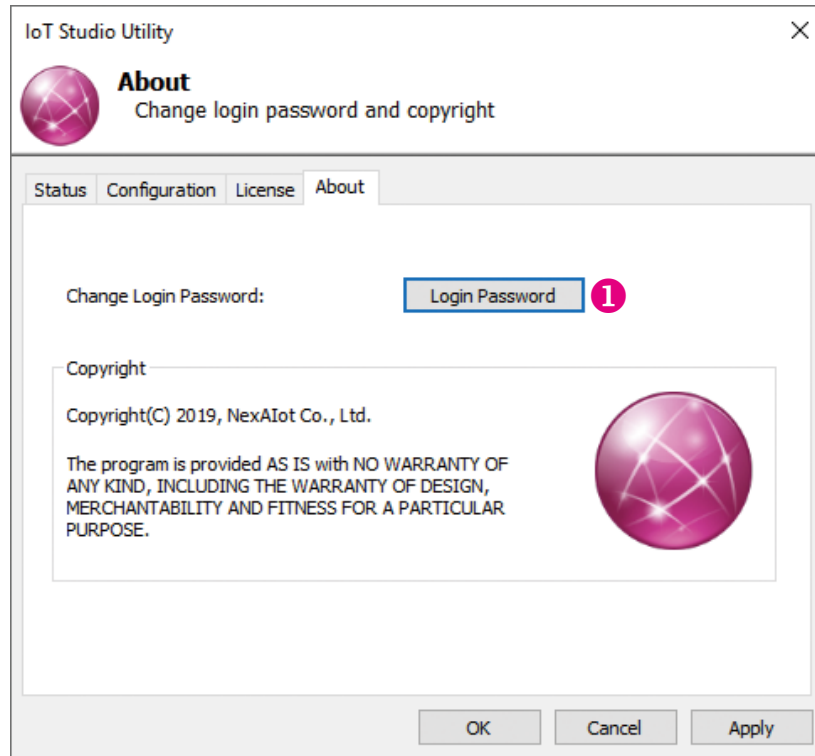
Item	Name	Description
1	Rebuild IoT Studio	<p>Click Rebuild IoT Studio to start the IoT Studio building process.</p> 
2	License	<p>Click License and enter your software key in the respective fields. Click OK when done.</p> 
3	Online Activation	<p>Change the radio button to Online. Click Activate directly after entering the software key. You'll see the below message box when the activation succeeds.</p>  <p>The entered product key will introduce a respective edition of IoT Studio displayed in IoT Studio Version Information and on the title of the GUI.</p>

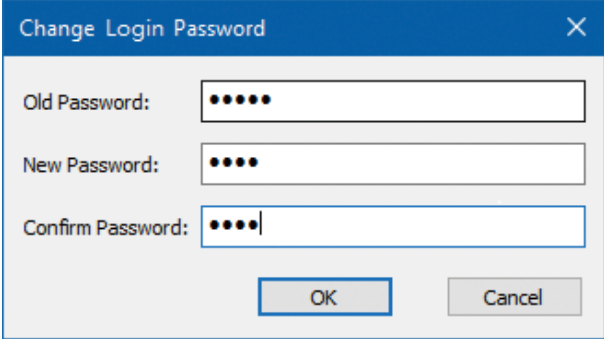
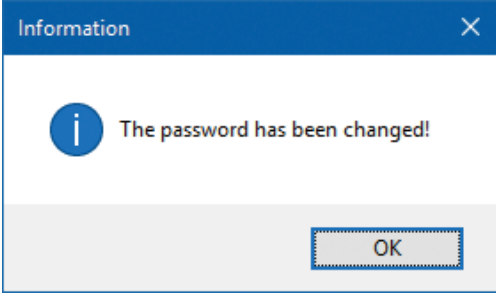
Item	Name	Description
4	Offline Activation	<p>Offline activation is designed for the fields where gateways cannot connect to the Internet. Change the radio button to Offline. Click Export and save the software key file(.nlm).</p>   <p>And then go to NexAloT Software License Key System: https://keyserver.nexaiot.com/offline_activation</p> 

Item	Name	Description
		<p>Click SELECT FILE HERE to upload the key file you've just exported. Then click UPLOAD to download the activated key file(.response).</p>  <p>Go back to the utility, and click Import to put the file you've just download on Key Server. You'll see the below message box when the activation succeeds.</p>  <p>The entered product key will introduce a respective edition of IoT Studio displayed in IoT Studio Version Information and on the title of the GUI.</p>

2.4 About

In this page, you can view copyright notice and change the login password for IoT Studio management.



Item	Name	Description
1	Login Password	<p>Click Login Password to change the login password. Enter the text in the respective fields, and click OK when done. A message will prompt you that the password has been changed.</p>   <p>If the input password is invalid, please enter it again.</p> 