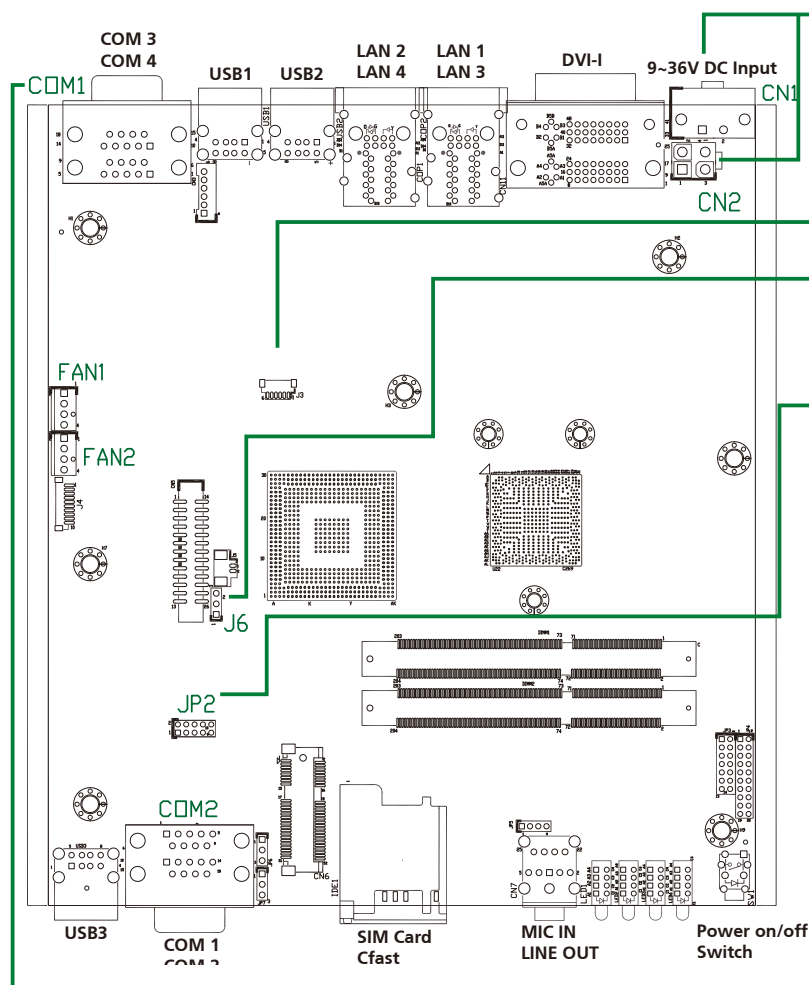


# NISB 2300 Quick Reference Guide

Ver A. (P/N:60177A0284X00)



**CN1: DC INPUT CONNECTOR**

Pin	Description
1	GND
2	VIN (9V~ 36V)

**CN2: POWER CONNNECTOR**

Pin	Description	Pin	Description
1	GND	2	GND
3	VIN POWER	4	VIN POWER

**J3: GPS CONNECTOR**

Pin	Description	Pin	Description	Pin	Description
1	VCC3_A	2	NA	3	COM5_TXD
4	COM5_RXD	5	GND	6	VCC3_S

**JP2: CMOS CLEAR PIN HEADER**

Pin	Description
*1-2	NORMAL
2-3	CLEAR CMOS

**J6: GPIO PIN HEADER**

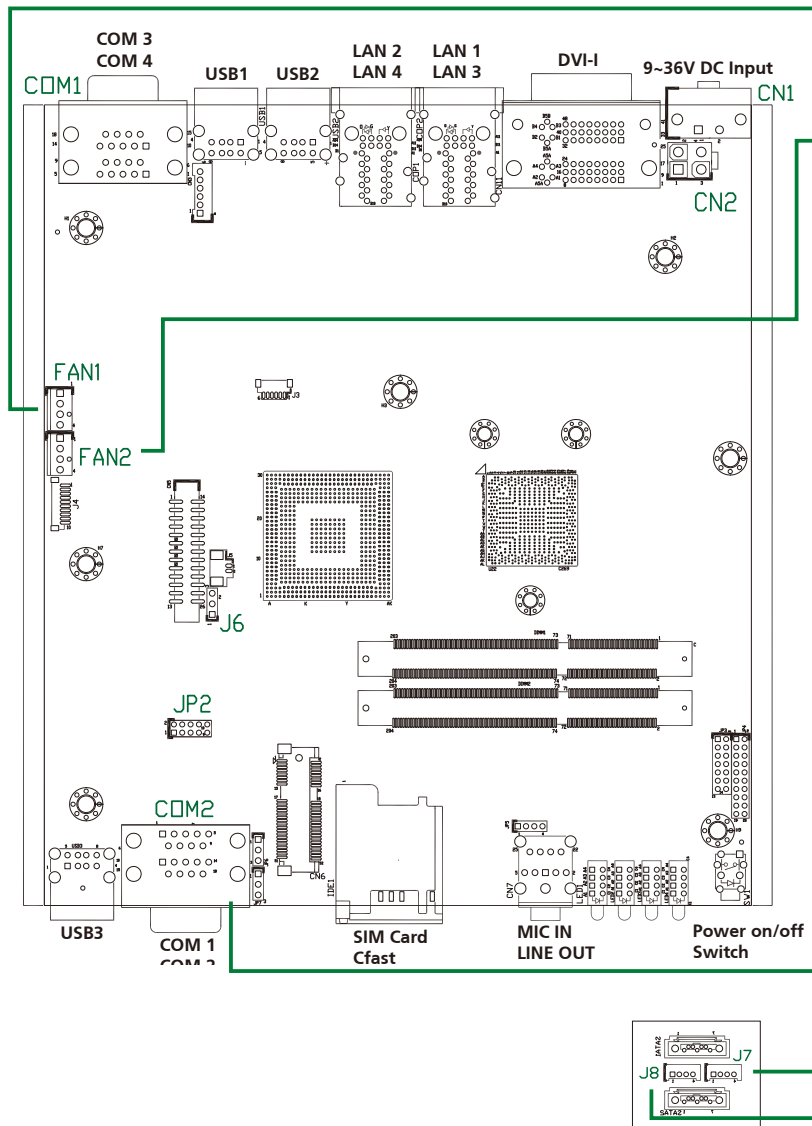
Pin	Description	Pin	Description	Pin	Description
1	ISO_VCC5	2	ISO_GND	3	SIO_GPO24(Pin58)
4	SIO_GPI20(Pin52)	5	SIO_GPO25(Pin59)	6	SIO_GPI21(Pin54)
7	SIO_GPO26(Pin60)	8	SIO_GPI22(Pin56)	9	SIO_GPO27(Pin61)
10	SIO_GPI23(Pin57)				

**COM1: COM 3~4 CONNECTOR**

COM3 CONNECTOR PIN DEFINITION					
RS232		RS485		RS422	
Pin	Description	Pin	Description	Pin	Description
1	SP3_DCD	1	SP3_DATA-	1	SP3_TX-
2	SP3_RXD	2	SP3_DATA+	2	SP3_TX+
3	SP3_TXD	3	NC	3	SP3_RX+
4	SP3_DTR	4	NC	4	SP3_RX-
5	GND	5	GND	5	GND
6	SP3_DSR	6	NC	6	NC
7	SP3_RTS	7	NC	7	NC
8	SP3_CTS	8	NC	8	NC
9	SP3_RI	9	NC	9	NC
COM4 CONNECTOR PIN DEFINITION					
RS232		RS485		RS422	
Pin	Description	Pin	Description	Pin	Description
1	SP4_DCD	1	SP4_DATA-	1	SP4_TX-
2	SP4_RXD	2	SP4_DATA+	2	SP4_TX+
3	SP4_TXD	3	NC	3	SP4_RX+
4	SP4_DTR	4	NC	4	SP4_RX-
5	GND	5	GND	5	GND
6	SP4_DSR	6	NC	6	NC
7	SP4_RTS	7	NC	7	NC
8	SP4_CTS	8	NC	8	NC
9	SP4_RI	9	NC	9	NC

# NISB 2300 Quick Reference Guide

Ver A. (P/N:60177A0284X00)



● **FAN1: FAN1 CONNECTOR**

	Pin	Description	Pin	Description
	1	GND	2	VCC12_S
	3	FAN_TAC1 (CPU_FAN_SPEED)	4	FAN_CTL1 (CPU_FAN_PWM)

● **FAN2: FAN2 CONNECTOR**

	Pin	Description	Pin	Description
	1	GND	2	VCC12_S
	3	FAN_TAC2 (CPU_FAN_SPEED)	4	FAN_CTL2 (CPU_FAN_PWM)

● **COM2: COM 1~2 CONNECTOR**

COM1 CONNECTOR PIN DEFINITION					
RS232		RS485		RS422	
Pin	Description	Pin	Description	Pin	Description
1	SP1_DCD	1	SP1_DATA-	1	SP1_TX-
2	SP1_RXD	2	SP1_DATA+	2	SP1_TX+
3	SP1_TXD	3	NC	3	SP1_RX+
4	SP1_DTR	4	NC	4	SP1_RX-
5	ISO_GND	5	ISO_GND	5	ISO_GND
6	SP1_DSR	6	NC	6	NC
7	SP1_RTS	7	NC	7	NC
8	SP1_CTS	8	NC	8	NC
9	SP1_RI	9	NC	9	NC

COM2 CONNECTOR PIN DEFINITION					
RS232		RS485		RS422	
Pin	Description	Pin	Description	Pin	Description
1	SP2_DCD	1	SP2_DATA-	1	SP2_TX-
2	SP2_RXD	2	SP2_DATA+	2	SP2_TX+
3	SP2_TXD	3	NC	3	SP2_RX+
4	SP2_DTR	4	NC	4	SP2_RX-
5	ISO_GND	5	ISO_GND	5	ISO_GND
6	SP2_DSR	6	NC	6	NC
7	SP2_RTS	7	NC	7	NC
8	SP2_CTS	8	NC	8	NC
9	SP2_RI	9	NC	9	NC

● **J7: SATA2 POWER CONNECTOR**

	Pin	Description	Pin	Description
	1	SATA_DET1	2	SATA_LED1
	3	GND	4	VCC5_SATA0

● **J8: SATA1 POWER CONNECTOR**

	Pin	Description	Pin	Description
	1	SATA_DET0	2	SATA_LED0
	3	GND	4	VCC5_SATA0

Quick reference guide is subject to change without prior notice. For any update, please visit our website: [www.nexcom.com](http://www.nexcom.com)  =Pin1 [\*]=Default setting