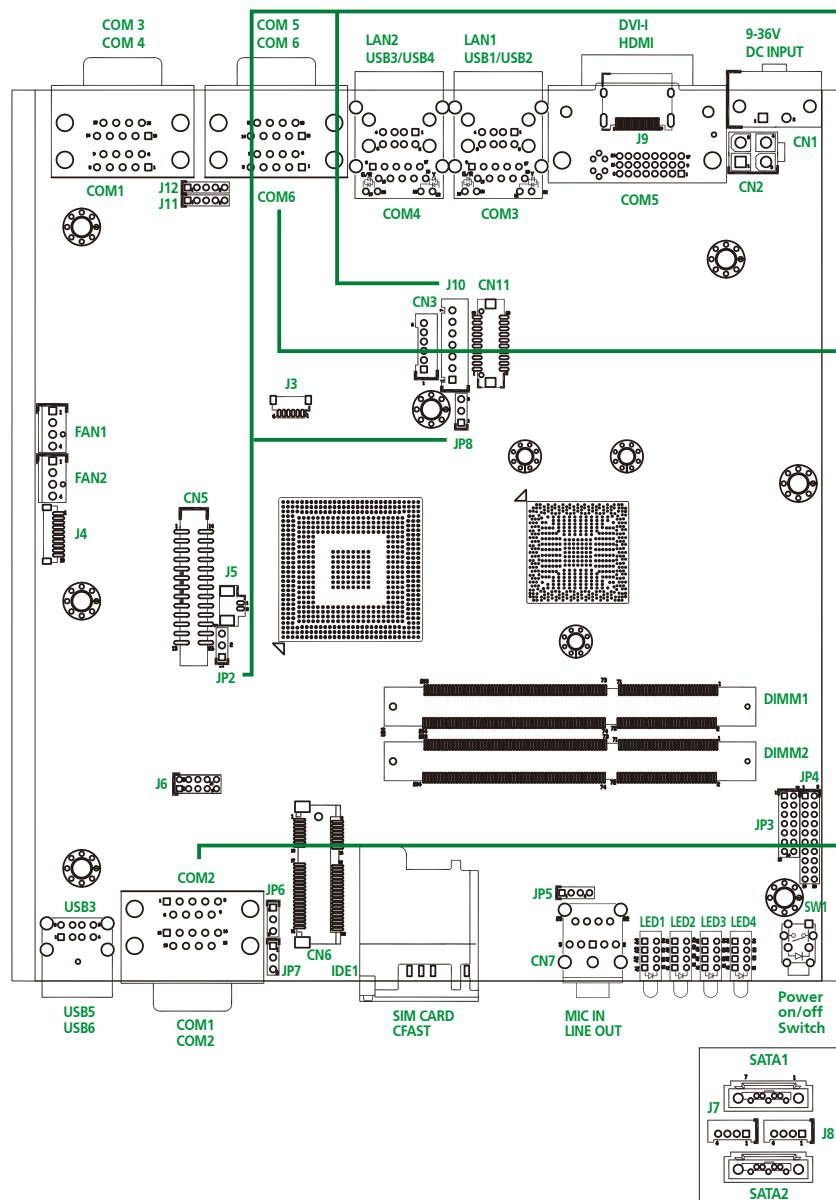


NISB 2200 Quick Reference Guide

Ver A. (P/N: 60177A0283X00)



JP8: PANEL CCFL POWER JUMP

PIN	DEFINITION
*1	VCC3_S (3.3V)
*2	VCC_LCD
3	VCC5_S(+5V)

JP2: CMOS CLEAR PIN HEADER

NORMAL	CLEAR CMOS
*1-2	2-3

J10: PANEL CCFL CONNECTOR

PIN	DEFINITION
1	VCC_LCD
2	V_INV (12V)
3	V_INV (12V)
4	BKLTCTRL
5	GND
6	GND
7	BKLTEN

COM6: COM 5~6 CONNECTOR

COM5 CONNECTOR PIN DEFINITION		COM6 CONNECTOR PIN DEFINITION	
PIN	DEFINITION	PIN	DEFINITION
1	SP5_DCD	1	SP6_DCD
2	SP5_RXD	2	SP6_RXD
3	SP5_TXD	3	SP6_TXD
4	SP5_DTR	4	SP6_DTR
5	GND	5	GND
6	SP5_DSR	6	SP6_DSR
7	SP5_RTS	7	SP6_RTS
8	SP5_CTS	8	SP6_CTS
9	SP5_RI	9	SP6_RI

COM2: COM 1~2 CONNECTOR

COM1 CONNECTOR PIN DEFINITION		RS232		RS485		RS422	
PIN	DEFINITION	PIN	DEFINITION	PIN	DEFINITION	PIN	DEFINITION
1	SP1_DCD	1	SP1_DATA-	1	SP1_TX-	1	SP1_TX-
2	SP1_RXD	2	SP1_DATA+	2	SP1_TX+	2	SP1_TX+
3	SP1_TXD	3	NC	3	SP1_RX+	3	SP1_RX+
4	SP1_DTR	4	NC	4	SP1_RX-	4	SP1_RX-
5	ISO_GND	5	ISO_GND	5	ISO_GND	5	ISO_GND
6	SP1_DSR	6	NC	6	NC	6	NC
7	SP1_RTS	7	NC	7	NC	7	NC
8	SP1_CTS	8	NC	8	NC	8	NC
9	SP1_RI	9	NC	9	NC	9	NC

COM2 CONNECTOR PIN DEFINITION

COM2 CONNECTOR PIN DEFINITION		RS232		RS485		RS422	
PIN	DEFINITION	PIN	DEFINITION	PIN	DEFINITION	PIN	DEFINITION
1	SP2_DCD	1	SP2_DATA-	1	SP2_TX-	1	SP2_TX-
2	SP2_RXD	2	SP2_DATA+	2	SP2_TX+	2	SP2_TX+
3	SP2_TXD	3	NC	3	SP2_RX+	3	SP2_RX+
4	SP2_DTR	4	NC	4	SP2_RX-	4	SP2_RX-
5	ISO_GND	5	ISO_GND	5	ISO_GND	5	ISO_GND
6	SP2_DSR	6	NC	6	NC	6	NC
7	SP2_RTS	7	NC	7	NC	7	NC
8	SP2_CTS	8	NC	8	NC	8	NC
9	SP2_RI	9	NC	9	NC	9	NC

J7: SATA2 POWER CONNECTOR

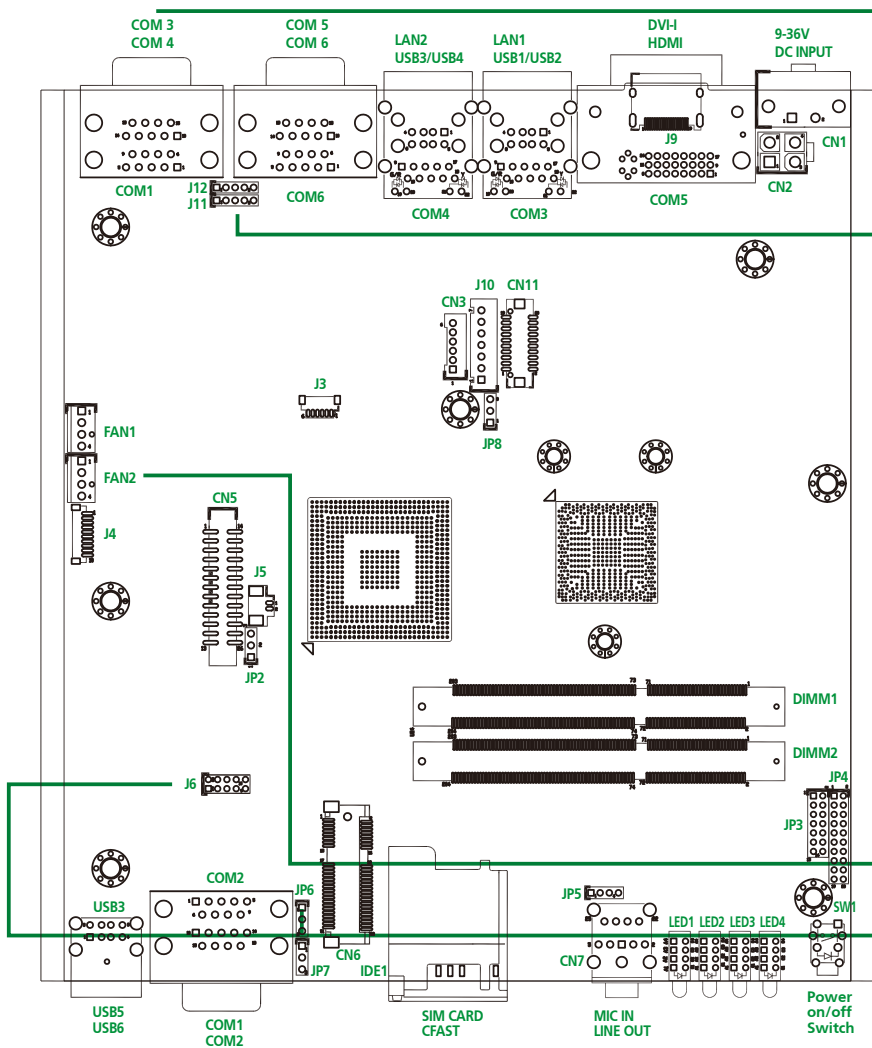
PIN	DEFINITION	PIN	DEFINITION
1	SATA_DET1	2	SATA_LED1
3	GND	4	VCC5_SATA1

J8: SATA1 POWER CONNECTOR

PIN	DEFINITION	PIN	DEFINITION
1	SATA_DET0	2	SATA_LED0
3	GND	4	VCC5_SATA0

NISB 2200 Quick Reference Guide

Ver A. (P/N: 60177A0283X00)



COM1: COM 3~4 CONNECTOR
COM3 CONNECTOR PIN DEFINITION

RS232		RS485		RS422	
PIN	DEFINITION	PIN	DEFINITION	PIN	DEFINITION
1	SP3_DCD	1	SP3_DATA-	1	SP3_TX-
2	SP3_RXD	2	SP3_DATA+	2	SP3_TX+
3	SP3_TXD	3	NC	3	SP3_RX+
4	SP3_DTR	4	NC	4	SP3_RX-
5	GND	5	GND	5	GND
6	SP3_DSR	6	NC	6	NC
7	SP3_RTS	7	NC	7	NC
8	SP3_CTS	8	NC	8	NC
9	SP3_RI	9	NC	9	NC

COM4 CONNECTOR PIN DEFINITION

RS232		RS485		RS422	
PIN	DEFINITION	PIN	DEFINITION	PIN	DEFINITION
1	SP4_DCD	1	SP4_DATA-	1	SP4_TX-
2	SP4_RXD	2	SP4_DATA+	2	SP4_TX+
3	SP4_TXD	3	NC	3	SP4_RX+
4	SP4_DTR	4	NC	4	SP4_RX-
5	GND	5	GND	5	GND
6	SP4_DSR	6	NC	6	NC
7	SP4_RTS	7	NC	7	NC
8	SP4_CTS	8	NC	8	NC
9	SP4_RI	9	NC	9	NC

J11: COM5 RS232 RI# PIN POWER SELECT

PIN	SIGNAL	JUMP FUNCTION DEFINITION	
1	VCC5_S	1-2	+5V
2	SP5_RI_T	2-3	+12V
3	VCC12_S	*4-5	RING
4	SP5_RI_T		
5	SP5_RI		

J12: COM6 RS232 RI# PIN POWER SELECT

PIN	SIGNAL	JUMP FUNCTION DEFINITION	
1	VCC5_S	1-2	+5V
2	SP6_RI_T	2-3	+12V
3	VCC12_S	*4-5	RING
4	SP6_RI_T		
5	SP6_RI		

FAN1: FAN1 CONNECTOR

PIN	DEFINITION	PIN	DEFINITION
1	GND	3	FAN_TAC1 (CPU_FAN_SPEED)
2	VCC12_S	4	FAN_CTL1 (CPU_FAN_PWM)

FAN2: FAN2 CONNECTOR

PIN	DEFINITION	PIN	DEFINITION
1	GND	3	FAN_TAC2 (CPU_FAN_SPEED)
2	VCC12_S	4	FAN_CTL2 (CPU_FAN_PWM)

J6: GPIO PIN HEADER

PIN	DEFINITION	PIN	DEFINITION
1	ISO_VCC5	2	ISO_GND
3	SIO_GPO24 (Pin58)	4	SIO_GPI20 (Pin52)
5	SIO_GPO25 (Pin59)	6	SIO_GPI21 (Pin54)
7	SIO_GPO26 (Pin60)	8	SIO_GPI22 (Pin56)
9	SIO_GPO27 (Pin61)	10	SIO_GPI23 (Pin57)

CN1: DC INPUT CONNECTOR

PIN	DEFINITION	PIN	DEFINITION
1	GND	2	VIN (9V~36V)

CN2: POWER CONNECTOR

PIN	DEFINITION	PIN	DEFINITION
1	GND	3	VIN
2	GND	4	VIN

Quick reference guide is subject to change without prior notice. For any update, please visit our website: www.nexcom.com □ =Pin1 [*]=Default setting