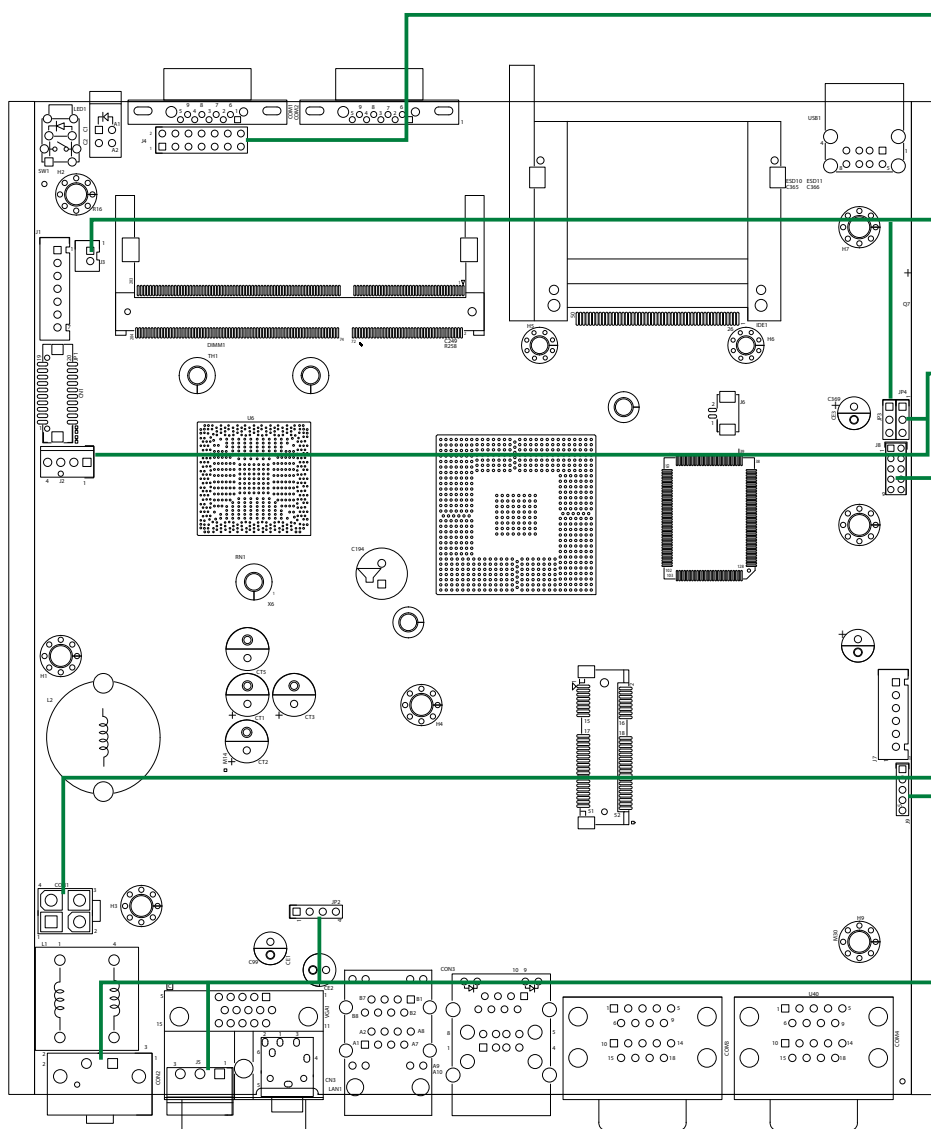


NISB 2100 Quick Reference Guide

Ver A. (P/N:60177A0223X00)



J4:LED pin header

| Pin | Signal | Pin | Signal | Pin | Signal |
|-----|-------------------|-----|------------------|-----|-------------------|
| 1 | POWER_OK | 2 | VCC_LEDPOWER | 3 | HDD_LED# |
| 4 | HDD_LEDPOWER | 5 | LAN1_LINK# | 6 | LAN1LINK_LEDPOWER |
| 7 | LAN1_ACT# | 8 | LAN1ACT_LEDPOWER | 9 | LAN2_LINK# |
| 10 | LAN2LINK_LEDPOWER | 11 | LAN2_ACT# | 12 | LAN2ACT_LEDPOWER |
| 13 | H/W RESET | 14 | GND | | |

J3:Power switch

| Pin | Signal |
|-----|--------|
| 1 | PSON# |
| 2 | GND |

JP3:CMOS Clear pin header

| Pin | Signal | Jump Function Definition |
|-----|----------|--------------------------|
| 1 | NC | *1-2 Normal |
| 2 | IRTCRST# | 2-3 CMOS_CLEAR |
| 3 | GND | |

J2:CPU FAN pin header

| Pin | Signal |
|-----|----------------|
| 1 | GND |
| 2 | VCC_12 |
| 3 | CPU1_FAN_SPEED |
| 4 | CPU1_FANPWM |

JP4:SMBus pin header

| Pin | Signal |
|-----|------------|
| 1 | SMBus_CLK |
| 2 | SMBus_data |
| 3 | GND |

J8:GPIO pin header

| Pin # for DB15 | Pin # for pin header | Signal | Pin # for DB15 | Pin # for pin header | Signal | Pin # for DB15 | Pin # for pin header | Signal |
|----------------|----------------------|--------|----------------|----------------------|--------|----------------|----------------------|--------|
| 1 | 2 | GND | 2 | 3 | GPO1 | 3 | 5 | GPO2 |
| 4 | 7 | GPO3 | 5 | 9 | GPO4 | 6 | 1 | VCC5 |
| 7 | 4 | GPI1 | 8 | 6 | GPI2 | 9 | 8 | GPI3 |
| 10 | 10 | GPI4 | 11 | | N/A | 12 | | N/A |
| | 13 | N/A | 14 | | N/A | 15 | | N/A |

J9:COM3 RS232 RI# Pin Power Select

| Pin | Signal | Jump Function Definition |
|-----|--------|--------------------------|
| 1 | VCC5 | 1-2 +5V |
| 2 | RING_T | 2-3 +12V |
| 3 | +12V | *4-5 RING |
| 4 | RING_T | |
| 5 | RING | |

CON1:Power Connector

| Pin | Signal |
|-----|-----------|
| 1 | GND |
| 2 | GND |
| 3 | VIN Power |
| 4 | VIN Power |

CON2:DC input connector

| Pin | Signal |
|-----|------------|
| 1 | GND |
| 2 | VIN(9~36V) |

J5:ATX Remote ON/OFF Switch

| Pin | Signal |
|-----|--------|
| 1 | GND |
| 2 | PWR_ON |
| 3 | PS_ON |

JP2:Mic-in pin header

| Pin | Signal |
|-----|----------|
| 1 | Mic-in L |
| 2 | Mic JD |
| 3 | GND |
| 4 | Mic-in R |

Quick reference guide is subject to change without prior notice. For any update, please visit our website: www.nexcom.com □ =Pin1 [*] =Default setting