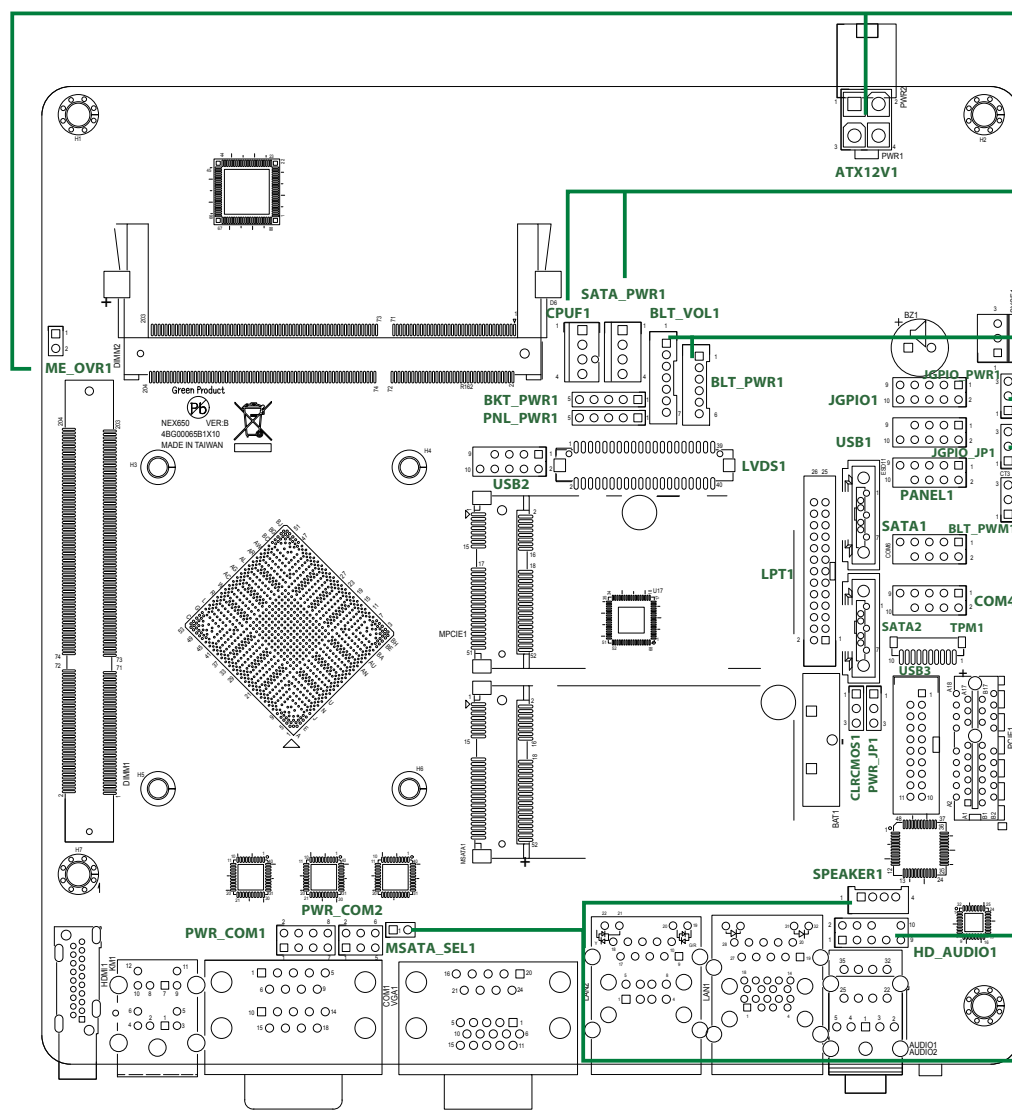


# NEX 650 Quick Reference Guide

Ver A. (P/N: 60177A0589X00)



**ME\_OVR1: ME Override**

	1	Short	Override
	2	Open	Normal Operation

**ATX12V1: DC\_IN Power Connector (+12V~+24V)**

	Pin	Definition
	1-2	GND
	3-4	DC Input

**CPUF1: CPU Fan Connector**

	Pin	Definition
	1	GND
	2	+12V
	3	CPU_FAN_SPEED
	4	FAN_SPEED_CONTROL

**SATA\_PWR1: SATA Power Output Connector**

	Pin	Definition
	1	+12V
	2	GND
	3	GND
	4	+5V

**BLT\_VOL1: Backlight Volume Control**

	Pin	Definition
	1	GPIO_VOL_UP
	2	GPIO_VOL_DW
	3	PWRDN
	4	LVDS1 BLUP
	5	LVDS1 BLDW
	6	GND
7	GND	

**BLT\_PWR1: Backlight Power Connector**

	Pin	Definition
	1	GND
	2	GND
	3	BL CTL
	4	BL EN
	5	LCD_BLT_VCC
6	LCD_BLT_VCC	

**JGPIO\_PWR1: Digital Input / Output Power Select**

	Pin	Definition
	1-2	+12V
	2-3	+5V

**JGPIO\_JP1: JGPIO\_JP Jumper**

	Pin	Definition
	1-2	High
	2-3	Low

**HD\_AUDIO1: Front Panel Audio Header**

	Pin	Definition	Pin	Definition	Pin	Definition
	1	MIC2_L	2	GND	3	MIC2_R
	4	PRESENCE#	5	OUT2_R	6	MIC_RET
	7	J_SENSE	8		9	OUT2_L
	10	OUT_RET				

**SPEAKER1: 2W Audio AMP Output Wafer**

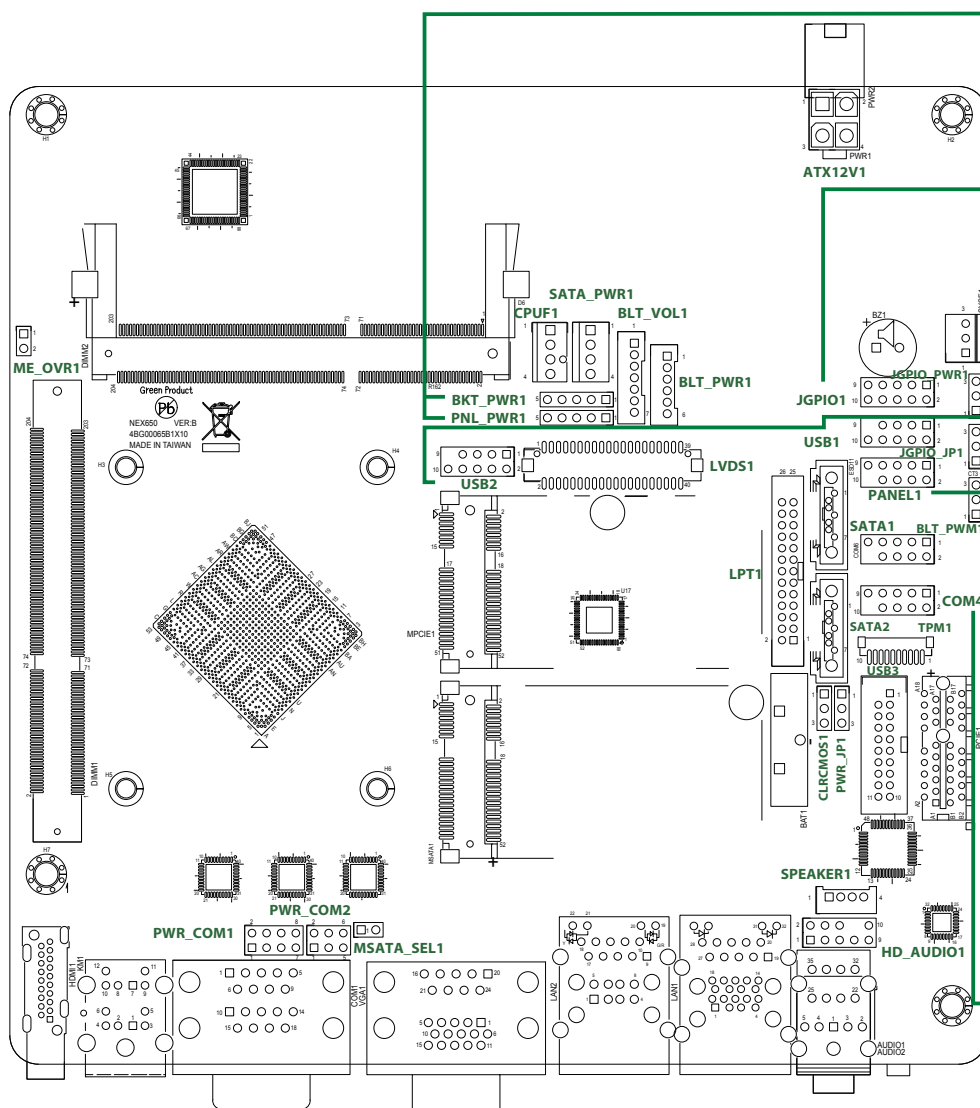
	Pin	Definition
	1	OUTLN
	2	OUTLP
	3	OUTRP
	4	OUTRN

**MSATA\_SEL1: mSATA Select**

	Open	For SATA2
	Close	For MSATA1

# NEX 650 Quick Reference Guide

Ver A. (P/N: 60177A0589X00)



**BKT\_PWR1: Backlight Power Selection**    **PNL\_PWR1: Panel Power Selection**

	Pin	Definition
	1-2	LCD_BLT_VCC: + 5V
	2-3	LCD_BLT_VCC: +12V
	4-5	LCD_BLT_VCC: DC_IN

	Pin	Definition
	1-2	LVDD + 3.3V
	2-3	LVDD + 5V
	4-5	LVDD +12V

**JGPIO1: Digital Input / Output Pin Header**

	Pin	Definition	Pin	Definition
	1	SIO_GP24	6	SIO_GP22
	2	SIO_GP20	7	SIO_GP27
	3	SIO_GP25	8	SIO_GP23
	4	SIO_GP21	9	JGPIO_PWR
5	SIO_GP26	10	GND	

**USB1, USB2: USB 2.0 Connectors**

	Pin	Definition	Pin	Definition
	1	USB_PWR	6	+ B
	2	USB_PWR	7	GND
	3	- A	8	GND
	4	+A	9	
5	- B	10	DUMMY	

**PANEL1: System Panel Header**

	Pin	Definition	Pin	Definition
	1	HDLED +	6	PWRBTN#
	2	PLED +	7	GND
	3	HDLED -	8	RESET#
	4	PLED -	9	GND
5	GMD			

**BLT\_PWM1: Backlight Control Level**

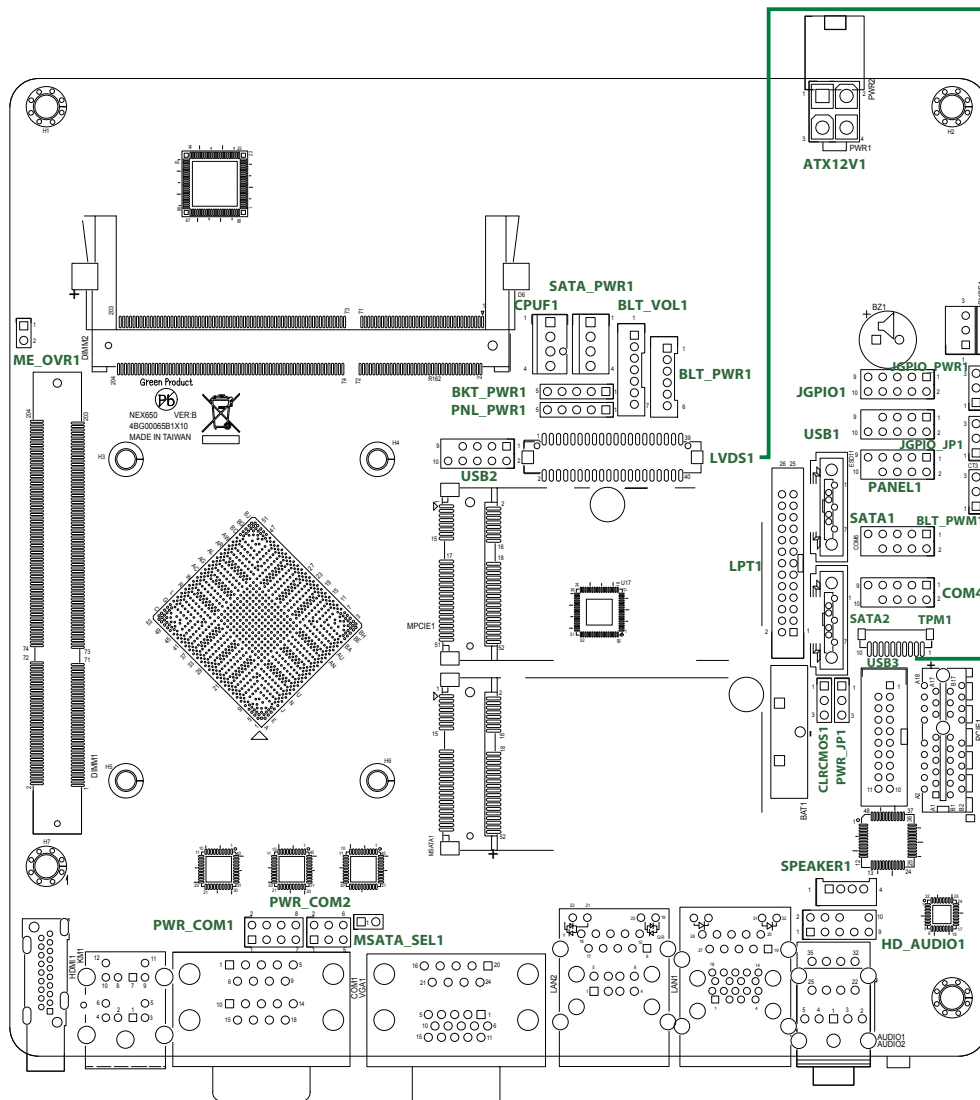
	Pin	Definition	Pin	Definition
	1-2	+ 3V Level	2-3	+ 5V Level

**COM4, COM6: COM port 4,6 Headers (RS232)**

	Pin	Definition	Pin	Definition
	1	DCD#	6	DSR#
	2	RXD	7	RTS#
	3	TXD	8	CTS#
	4	DTR#	9	RI#
5	GND			

# NEX 650 Quick Reference Guide

Ver A. (P/N: 60177A0589X00)



**LVDS1: LVDS Connector**

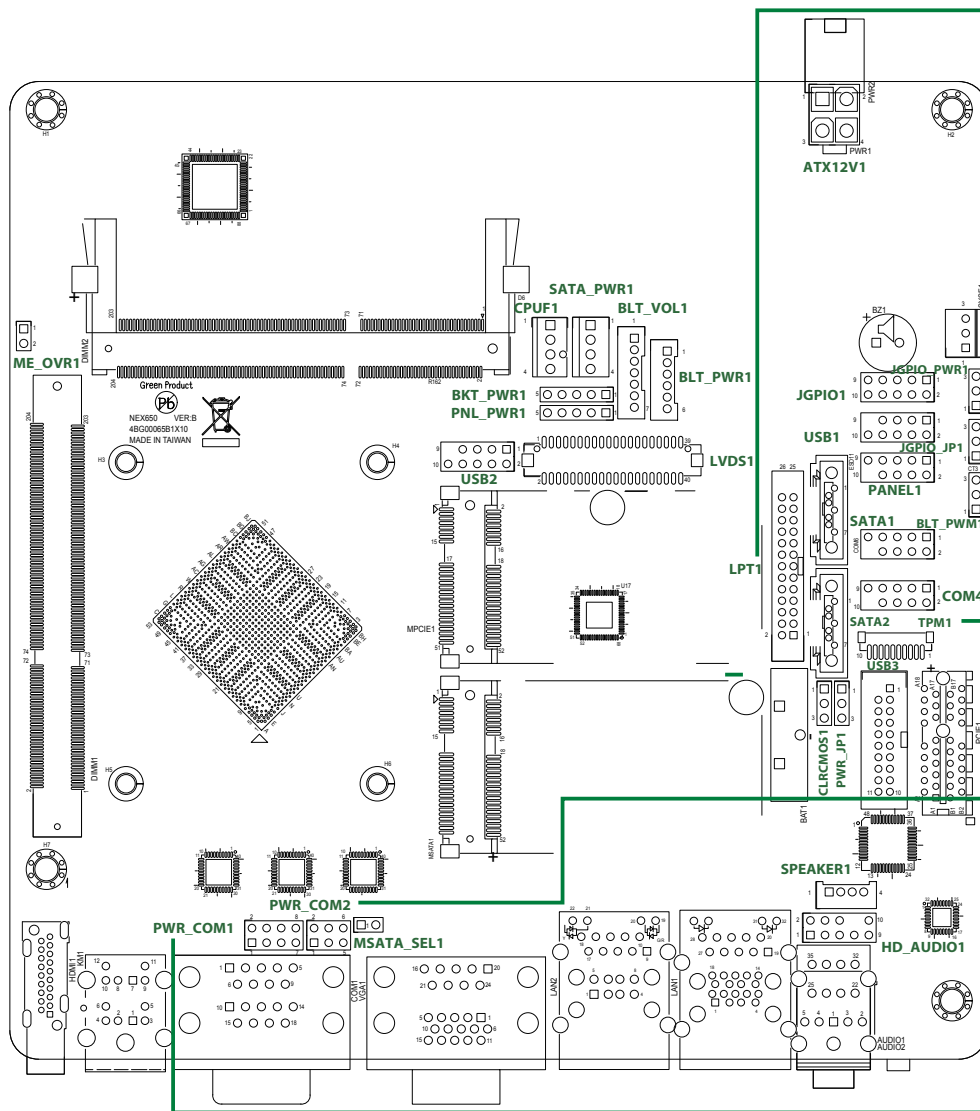
Pin	Definition	Pin	Definition
1	LCD_VCC	21	LVDS_B_DATA0#
2	LCD_VCC	22	LVDS_B_DATA0
3	+ 3.3V	23	GND
4	LDDC_CLK	24	LVDS_B_DATA1#
5	LDDC_DATA	25	LVDS_B_DATA1
6	LVDS_A_DATA0#	26	GND
7	LVDS_A_DATA0	27	LVDS_B_DATA2#
8	GND	28	LVDS_B_DATA2
9	LVDS_A_DATA1#	29	DPLVDD_EN
10	LVDS_A_DATA1	30	LVDS_B_DATA3#
11	GND	31	LVDS_B_DATA3
12	LVDS_A_DATA2#	32	GND
13	LVDS_A_DATA2	33	LVDS_B_CLK#
14	GND	34	LVDS_B_CLK
15	LVDS_A_DATA3#	35	GND
16	LVDS_A_DATA3	36	CON_LBKLT_EN
17	GND	37	CON_LBKLT_CTL
18	LVDS_A_CLK#	38	LCD_BLT_VCC
19	LVDS_A_CLK	39	LCD_BLT_VCC
20	GND	40	LCD_BLT_VCC

**USB3: USB 3.0 + USB2.0 Connector**

Pin	Definition	Pin	Definition
1	+ 5V_USB3_P34	11	USB2_C_P3
2	USB3_RX_C_N4	12	USB2_C_N3
3	USB3_RX_C_P4	13	GND
4	GND	14	USB3_TX_C_P3
5	USB3_TX_C_N4	15	USB3_TX_C_N3
6	USB3_TX_C_P4	16	GND
7	GND	17	USB3_RX_C_P3
8	USB2_C_N4	18	USB3_RX_C_N3
9	USB2_C_P4	19	+ 5V_USB3_P34
10	N/C		

# NEX 650 Quick Reference Guide

Ver A. (P/N: 60177A0589X00)



**LPT1: Printer Port Box Header**

Pin	Definition	Pin	Definition
1	STB#_C	14	GND
2	AFD#	15	SPD6_C
3	SPD0_C	16	GND
4	ERR#	17	SPD7_C
5	SPD1_C	18	GND
6	INIT#	19	ACK#
7	SPD2_C	20	GND
8	SLIN#	21	BUSY
9	SPD3_C	22	GND
10	GND	23	PE
11	SPD4_C	24	GND
12	GND	25	SLCT
13	SPD5_C	26	GND

**TPM1: TPM Connector**

Pin	Definition	Pin	Definition
1	GND	6	S_ILB_LPC_AD_2
2	PLTRST_3P3#	7	S_ILB_LPC_AD_1
3	S_ILB_LPC_CLK_1	8	S_ILB_LPC_AD_0
4	S_ILB_LPC_FRAME#	9	ILB_LPC_SERIRQ
5	S_ILB_LPC_AD_3	10	+ 3.3V

**PWR\_COM2: COM2 Port PWR Settings**

Pin	Definition	Pin	Definition
1	+ 5V	4	+ 12V
2	PWR_RI#_COM2	5	RI#_COM2
3	PWR_RI#_COM2	6	PWR_RI#_COM2

**PWR\_COM1: COM1 Port PWR Settings**

Pin	Definition	Pin	Definition
1	+ 5V	5	+ 5VSB
2	PWR_RI#_COM1	6	PWR_RI#_COM1
3	PWR_RI#_COM1	7	RI#_COM1
4	+ 12V	8	PWR_RI#_COM1