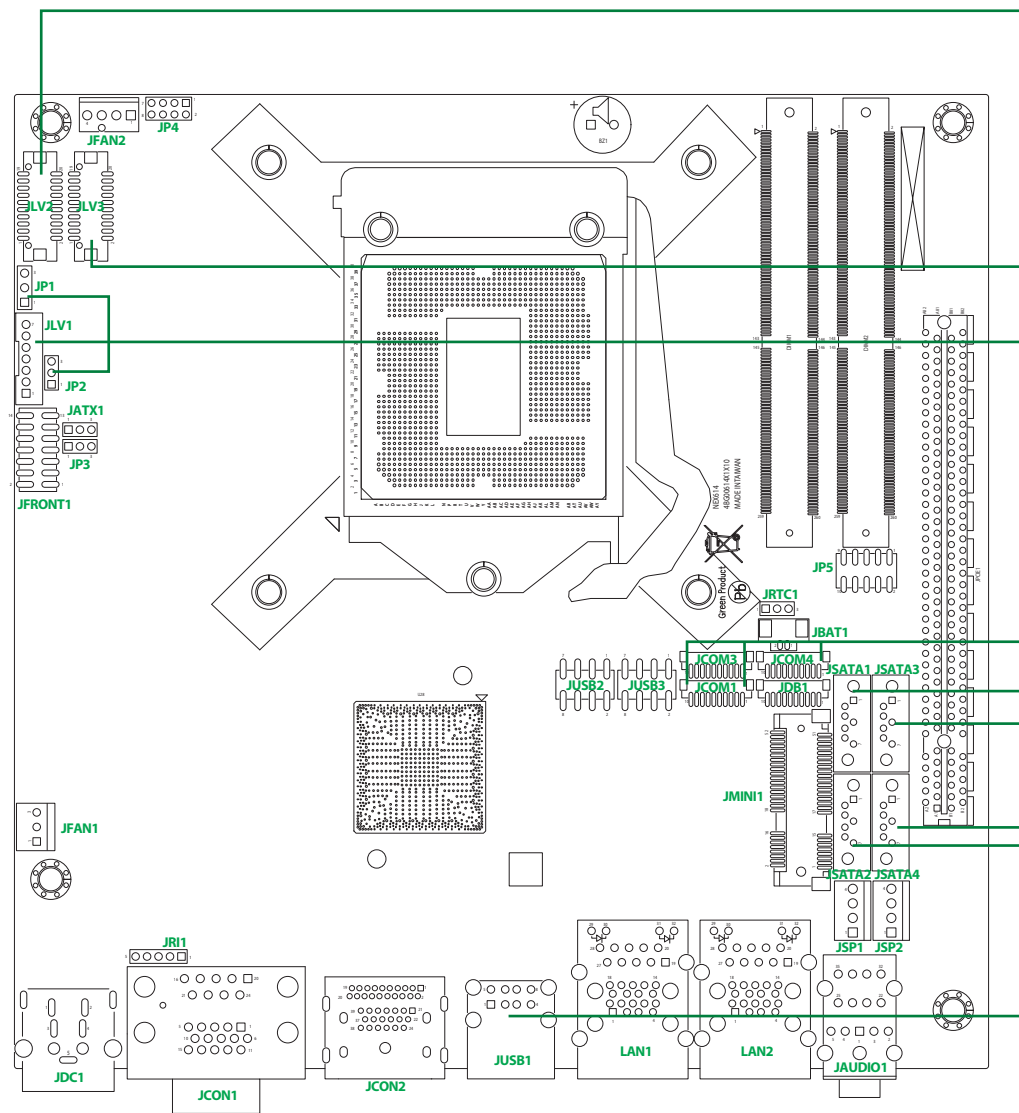


NEX 614 Quick Reference Guide

Ver A. (P/N: 60177A0570X00)



JLV2: LVDS Connector

Pin	Definition	Pin	Definition	Pin	Definition
1	LVDS_DDC_CLK	2	LVDS_DDC_DATA	3	+VCC_LCD
4	LVDSA_LDC0P	5	LVDSA_LDC3P	6	LVDSA_LDC0N
7	LVDSA_LDC3N	8	+VCC_LCD	9	GND
10	LVDSA_LDC1P	11	LVDSA_LL1CP	12	LVDSA_LDC1N
13	LVDSA_LL1CP	14	GND	15	GND
16	+V_INV	17	LVDSA_LDC2P	18	+V_INV
19	LVDSA_LDC2N	20	GND		

JLV3: LVDS Connector

Pin	Definition	Pin	Definition	Pin	Definition
1	LVDS_DDC_CLK	2	LVDS_DDC_DATA	3	+VCC_LCD
4	LVDSB_LDC4P	5	LVDSB_LDC7P	6	LVDSB_LDC4N
7	LVDSB_LDC7N	8	+VCC_LCD	9	GND
10	LVDSB_LDC5P	11	LVDSB_LL2CP	12	LVDSB_LDC5N
13	LVDSB_LL2CN	14	GND	15	GND
16	+V_INV	17	LVDSB_LDC6P	18	+V_INV
19	LVDSB_LDC6N	20	GND		

JLV1: Panel Inverter Power WAFER

Pin	Definition
1	VCC5
2	+V_INV
3	+V_INV
4	PL_BKLTCTRL
5	GND
6	GND
7	M_BKLTEN_R

JP2: Panel PWM/CCFL Select

Pin	Definition
1-2	CCFL
2-3	PWM

JP1: LCD Power Select

Pin	LCD Power
2-3	+5V
1-2	+3V3

JSATA1, JSATA3, JSATA4, JSATA2 (Q170 only): SATA Connector

Pin	Definition
1	GND
2	SATA6G_TX_DP
3	SATA6G_TX_DN
4	GND
5	SATA6G_RX_DN
6	SATA6G_RX_DP
7	GND

JCOM1 (Port3), JCOM2 (Port1), JCOM3 (Port4): COM Port (Box Header)

Pin	Definition	Pin	Definition
1	COM_DCD#	2	COM_RXD
3	COM_TXD	4	COM_DTR#
5	GND	6	COM_DSR#
7	COM_RTS#	8	COM_CTS#
9	COM_RI#	10	GND

JUSB1: USB 2.0 Connector

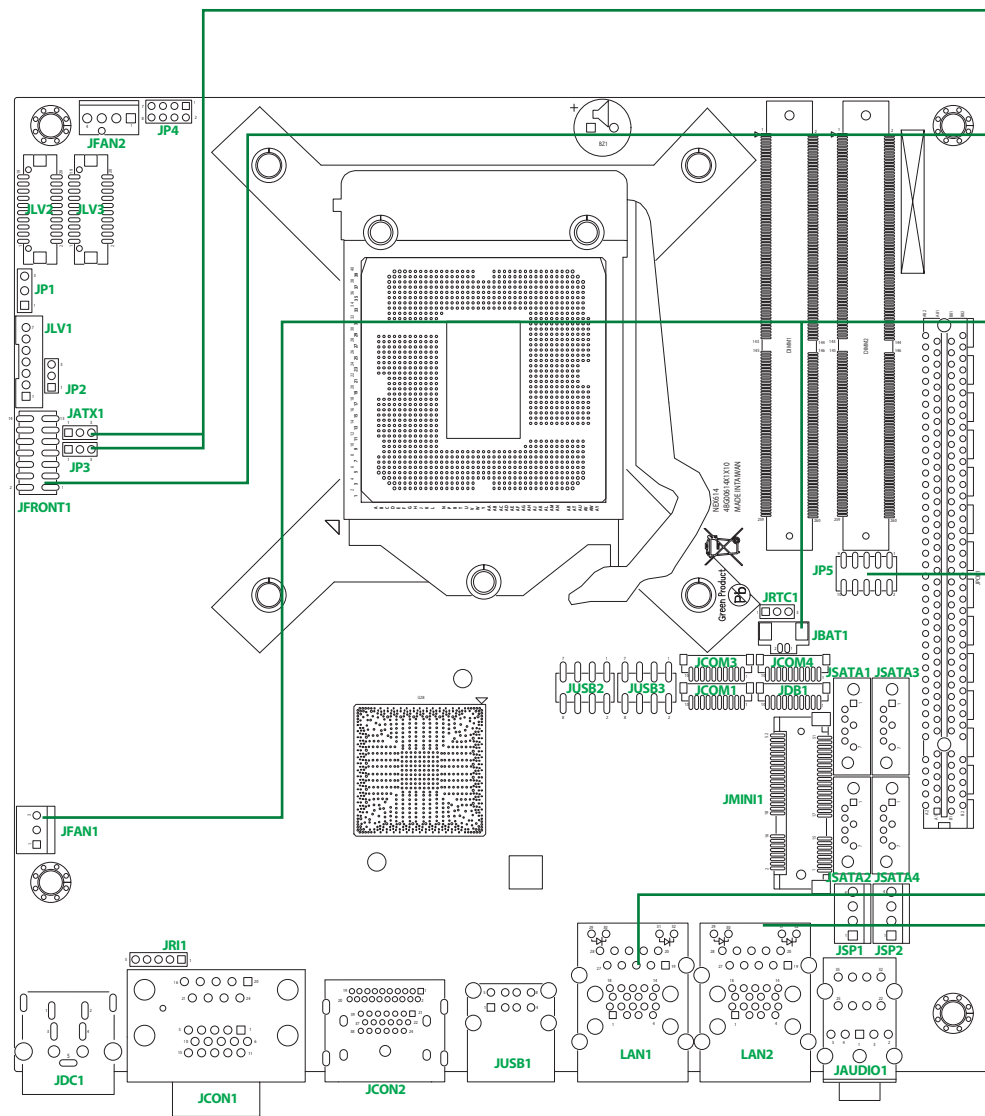
Pin	Definition	Pin	Definition
1	USBVCC (5V)	5	USBVCC (5V)
2	USB2_DN5	6	USB2_DN6
3	USB2_DP5	7	USB2_DP6
4	GND	8	GND

JSP1, JSP2: SATA Power

Pin	Definition
1	VCC12
2	GND
3	GND
4	VCC5

NEX 614 Quick Reference Guide

Ver A. (P/N: 60177A0570X00)



JP3: PEGX16 Mode Select

	Pin	Definition
	1-2(Default)	PEG=1 X16 LANE
	2-3	PEG = 2X8 LANE

JATX1: ATX/AT Mode Select Jumper

	Pin	Definition
	1-2	ATX mode (option)
	2-3 (Default)	AT mode

JFRONT1: Front Panel

	Pin	Definition	Pin	Definition	Pin	Definition
	1	POWER LED	2	VCC (PWR LED)	3	HDD LED
	4	VCC(PWR LED)	5	SMB_CLK	6	VCC3
	7	SMB_DAT	8	GND	9	SLP_S3_N
	10	PS_ON	11	PM_RESET#_J	12	GND
	13	PWRBTN#_C	14	GND		

JFAN1: FAN1 for System Fan

	Pin	Definition
	1	GND
	2	FAN2_12V_C
	3	FAN_TAC2_C

JBAT1: RTC Battery Wafer

	Pin	Definition
	1	GND
	2	VBAT

JP5: SIO GPIO Connector

	Pin	Definition	Pin	Definition	Pin	Definition	Pin	Definition
	1	VCC(5V)	2	GND	3	SIO_GPIO80	4	SIO_GPIO84
	5	SIO_GPIO81	6	SIO_GPIO85	7	SIO_GPIO82	8	SIO_GPIO86
	9	SIO_GPIO83	10	SIO_GPIO87				

LAN1: RJ45 & USB3.0 x 2 Conenctor

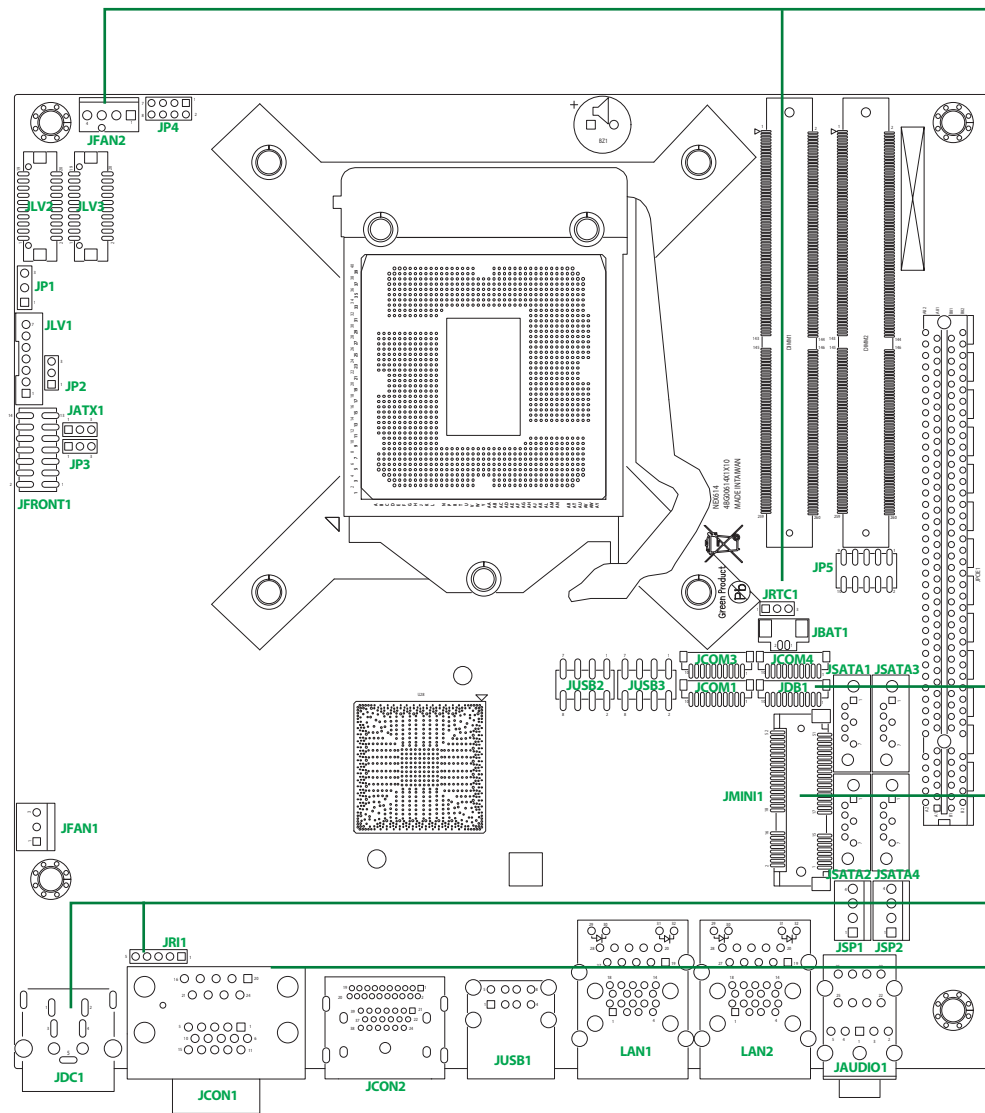
	Pin	Definition	Pin	Definition	Pin	Definition
	1	P5V_USB_P01	2	USB2N1_C	3	USB2P1_C
	4	GND	5	USB3RN1_C	6	USB3RP1_C
	7	GND	8	USB3TN1_C	9	USB3TP1_C
	10	P5V_USB_P01	11	USB2_2N_C	12	USB2_2P_C
	13	GND	14	USB3_RX2_N_C	15	USB3_RX2_P_C
	16	GND	17	USB3TN2_C	18	USB3TP2_C
	19	LAN1_VCT	20	LAN_MDI0P	21	LAN_MDI0N
	22	LAN_MDI1P	23	LAN_MDI1N	24	LAN_MDI2P
	25	LAN_MDI2N	26	LAN_MDI3P	27	LAN_MDI3N
	28	GND	29	LAN1_ACT_P	30	LAN1_LED_ACT#
	31	LAN1_LINK100#		LAN1_1000_P		

LAN2: RJ45 & USB3.0 x 2 Conenctor

	Pin	Definition	Pin	Definition	Pin	Definition
	1	P5V_USB_P23	2	USB2N4_C	3	USB2P4_C
	4	GND	5	USB3RN4_C	6	USB3RP4_C
	7	GND	8	USB3TN4_C	9	USB3TP4_C
	10	P5V_USB_P23	11	USB2_3N_C	12	USB2_3P_C
	13	GND	14	USB3_RX3_N_C	15	USB3_RX3_P_C
	16	GND	17	USB3TN3_C	18	USB3TP3_C
	19	LAN2_VCT	20	LAN2_MDI0P	21	LAN2_MDI0N
	22	LAN2_MDI1P	23	LAN2_MDI1N	24	LAN2_MDI2P
	25	LAN2_MDI2N	26	LAN2_MDI3P	27	LAN2_MDI3N
	28	GND	29	LAN2_ACT_P	30	LAN2_LED_ACT#
	31	LAN2_LINK100#	32	LAN2_1000_P		

NEX 614 Quick Reference Guide

Ver A. (P/N: 60177A0570X00)



JFAN2: FAN2 for CPU 4 Pin Fan

	Pin	Definition	Pin	Definition
1	1	GND	2	FAN1_12V_C
3	3	FAN_TAC1_C	4	FAN_CTL1_C

JRTC1: RTC CMOS Clear Pin Header

	Pin	Definition
1-2(Default)	1-2	NORMAL
2-3	2-3	Clear CMOS

JMINI1: Mini-PCIe/mSATA Connector

	Pin	Definition	Pin	Definition
1	1	WAKE#	2	3.3Vaux
3	3	NC	4	GND
5	5	NC	6	1.5V
7	7	CLKREQ#	8	
9	9	GND	10	
11	11	REFCLK-	12	
13	13	REFCLK+	14	
15	15	GND	16	
KEY		KEY		
17	17	18	GND	
19	19	20	W_DISABLE#	
21	21	22	PERST#	
23	23	24	+3.3Vaux	
25	25	26	GND	
27	27	28	+1.5V	
29	29	30	SMB_CLK	
31	31	32	SMB_DATA	
33	33	34	GND	
35	35	36	USB_D-	
37	37	38	USB_D+	
39	39	40	GND	
41	41	42	NC	
43	43	44	NC	
45	45	46	NC	
47	47	48	+1.5V	
49	49	50	GND	
51	51	52	+3.3Vaux	

JDB1: Debug Port

	Pin	Definition
1	1	GND
2	2	RST_LAN_SIO_MINI_N
3	3	CLK_PCI_P80
4	4	LPC_FRAME#
5	5	LPC_AD3
6	6	LPC_AD2
7	7	LPC_AD1
8	8	LPC_AD0
9	9	INT_SERIRQ
10	10	VCC(3.3V)

JRI1: RS232/422/485 Voltage Select

	JP	RI Mode
1	1	VCC5
2	2	COM_RI#2_con
3	3	VCC5
4	4	COM_RI#2_con
5	5	COM_RI#2

JDC1: Power In Connector

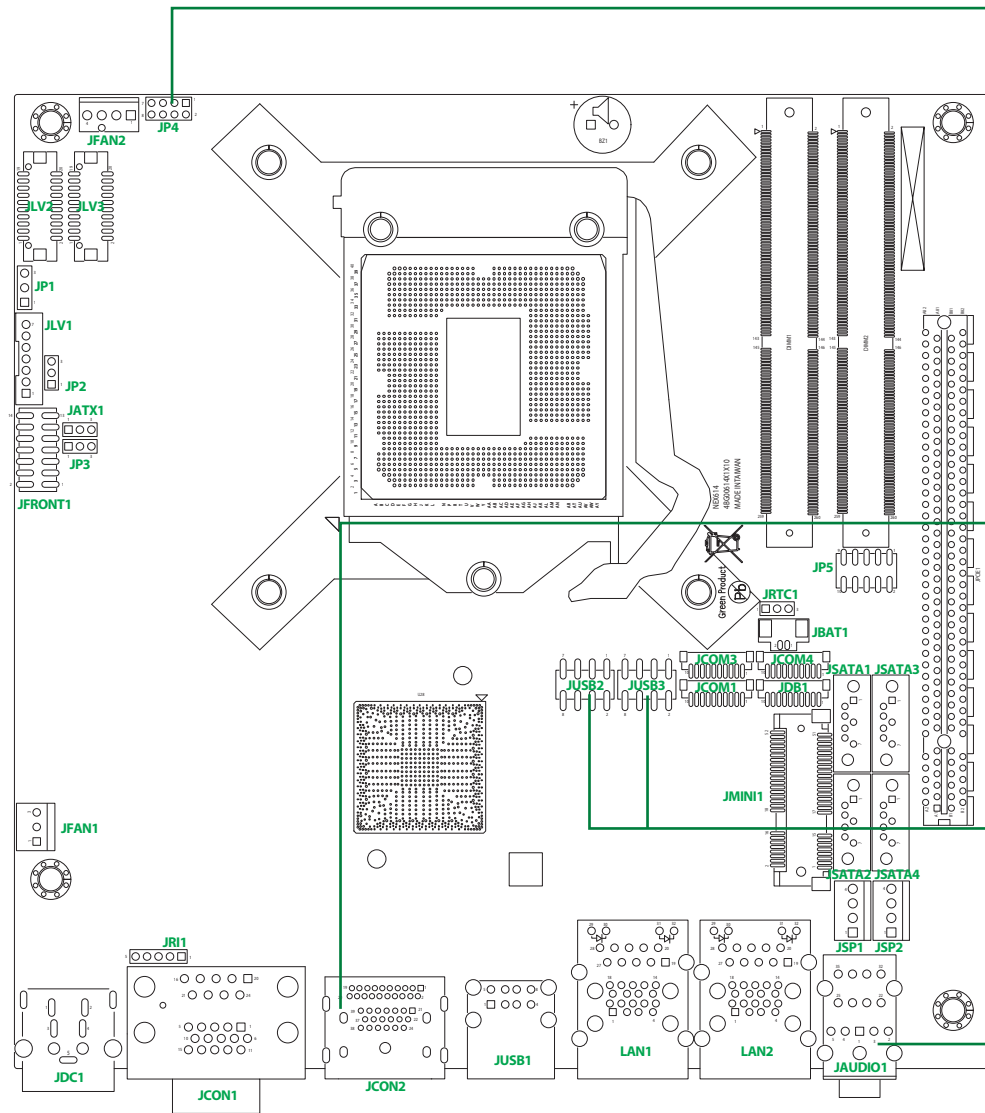
	Pin	Definition
1	1	VCC
2	2	VCC
3	3	GND
4	4	GND
5	5	CGND

JCON1: VGA Port/COM Port (RS232/422/485)

	Pin	Definition	Pin	Definition	Pin	Definition
1	1	RED_VGA	2	GREEN_VGA	3	BLUE_VGA
4	4	NC	5	GND	6	VGA_GND
7	7	VGA_GND	8	VGA_GND	9	VGA_+5V
10	10	GND	11	NC	12	VGA_SDA_C
13	13	HSYNC_VGA	14	VSYNC_VGA	15	VGA_CLK_C
16	16	COM_DCD#2	17	COM_RXD#2	18	COM_TXD2
19	19	COM_DTR#2	20	GND	21	COM_DSR#2
22	22	COM_RTS#2	23	COM_CTS#2	24	COM_RI#2_con

NEX 614 Quick Reference Guide

Ver A. (P/N: 60177A0570X00)



JP4: Panel Resolution

7	○	○	○	□	1	Pin	Definition	Pin	Definition	Pin	Definition
8	○	○	○	○	2	1	CH7511_GPIO3	2	GND	3	CH7511_GPIO2
						4	GND	5	CH7511_GPIO1	6	GND
						7	CH7511_GPIO0	8	GND		

GPIO (3.0)	HA (Pixel)	VG (line)	CD (bit)	Port
0000	800	600	6	Single
0001	1024	768	6	Single
0010	1024	768	8	Single
0011	1280	768	6	Single
0100	1280	800	6	Single
0101	1280	800	8	Single
0110	1280	1024	8	Dual
0111	1366	768	6	Single
1000	1366	768	8	Single
1001	800	480	6	Single
1010	800	480	8	Single
1011	1024	600	6	Single
1100	1024	600	8	Single
1001	1600	1200	8	Dual
1110	1920	1080	8	Dual
1111	1920	1200	8	Dual

JCON2: HDMI+DP Connector

Pin	Definition	Pin	Definition	Pin	Definition
1	DPB_LANE_P0_C	2	GND	3	DPB_LANE_N0_C
4	DPB_LANE_P1_C	5	GND	6	DPB_LANE_N1_C
7	DPB_LANE_P2_C	8	GND	9	DPB_LANE_N2_C
10	DPB_LANE_P3_C	11	GND	12	DPB_LANE_N3_C
13	DPB_CONFIG1_C	14	DPB_CONFIG2_C	15	DPB_AUX_P_C
16	GND	17	DPB_AUX_N_C	18	DPB_HPD_C
19	GND	20	DP_PWR	21	HDMI_D2+_C
22	GND	23	HDMI_D2-_C	24	HDMI_D1+_C
25	GND	26	HDMI_D1-_C	27	HDMI_D0+_C
28	GND	29	HDMI_D0-_C	30	HDMI_CK+_C
31	GND	32	HDMI_CK-_C	33	NC
34	NC	35	HDMI_SCL_C	36	HDMI_SDA_C
37	GND	38	HDMI_PWR	39	HDMI_HPD

JUSB3: USB2.0 Pin Header

Pin	Definition	Pin	Definition
1	P5V_USB_P9_10	2	GND
3	USB2N9_C	4	USB2P11_C
5	USB2P9_C	6	USB2N11_C
7	GND	8	P5V_USB_P9_10

JUSB2: USB2.0 Pin Header

Pin	Definition	Pin	Definition
1	P5V_USB_P78	2	GND
3	USB2N7_C	4	USB2P8_C
5	USB2P7_C	6	USB2N8_C
7	GND	8	P5V_USB_P78

JAUDIO1: Audio Line-Out/Line-In/MIC

Pin	Definition	Pin	Definition	Pin	Definition
1	GND	22	LINE_OUT_LC	32	LINE1-L1
2	MIC_OUT-L	23	GND	33	GND
3	GND	24	LINEOUT_JD	34	LININ_JD
4	MIC_JD	25	LINE_OUT_RC	35	LINE1-R1
5	MIC_OUT-R				