



**NEXCOM International Co., Ltd.**

**Intelligent Digital Security**

**IP Camera**

**NCi-312**

User Manual

# CONTENTS

## Preface

Copyright .....	v
Disclaimer .....	v
Acknowledgements .....	v
Regulatory Compliance Statements .....	v
Declaration of Conformity .....	v
RoHS Compliance .....	vi
Safety Information .....	vii
Installation Recommendations .....	vii
Safety Precautions .....	viii
Technical Support and Assistance .....	ix
Conventions Used in this Manual .....	ix
Package Contents .....	x

## Chapter 1: Product Introduction

Overview .....	1
Key Features .....	1
Hardware Specifications .....	2
Physical Descriptions .....	3
D/I/O Pinout Assignment .....	3
Hardware Installation .....	4

## Chapter 2: Camera Configuration

Accessing the Camera's Configuration Menu (Graphical User Interface) ..	5
Installing IP-FINDER .....	5

IP-FINDER .....	8
Web Browser (Internet Explorer) .....	10
Configuring the Camera's Setting .....	11
Browsing Through the Configuration Menu .....	12
Video .....	13
Video Stream .....	13
Stream 1 (H.264) .....	13
Stream 2 (H.264) .....	14
Stream 3 (MJPEG) .....	14
Camera Settings .....	15
Image Adjustments .....	15
Mirror & Flip .....	16
Wide Dynamic Range (WDR) .....	16
Camera Settings Cont. ....	17
White Balance .....	17
Exposure .....	17
Day & Night .....	18
Overlay Settings .....	19
Contents .....	19
Privacy Mask .....	20
Settings .....	20
Mask Zones .....	21
Network .....	22
TCP/IP .....	22
IP Address Configuration .....	22
Current Network Settings .....	22

FTP .....	23	Time Settings .....	34
FTP Server .....	23	Date & Time Format .....	35
Login Information .....	23	NTP Server .....	35
Test Remote FTP Server .....	23	Firmware Upgrade .....	36
SMTP .....	24	Firmware Version .....	36
SMTP Server .....	24	Update .....	36
Login Information .....	24	Maintenance .....	37
Ports .....	25	Maintain .....	37
HTTP .....	25	Camera Name Settings .....	37
RTSP .....	25	Advanced Settings .....	38
Events .....	26	Video .....	39
Motion Detection .....	26	Camera Settings (Advanced) .....	39
Settings .....	26	Chroma & Sharpness Suppression .....	39
Detection Zones .....	27	Manual White Balance .....	39
Alarm In/Out Trigger .....	28	Manual Exposure & Gain .....	39
Alarm In Control .....	28	Auto Exposure Configuration .....	40
Alarm In Mode .....	28	Gamma Control .....	40
Alarm Out Control .....	28	ROI .....	41
Event Actions .....	29	Auto Exposure Weights .....	42
When Motion Detection Triggered .....	29	Network .....	43
When Alarm In Triggered .....	29	DDNS .....	43
System .....	31	DDNS Settings .....	43
Recording Settings .....	31	SNMP .....	44
AVI File Setting .....	31	SNMP v1/v2 .....	44
User Management .....	32	Traps for SNMP v1/v2 .....	44
Add/Modify User Accounts .....	32	SNMP v3 .....	44
User List .....	32	Multicast .....	45
SD Card Management .....	33	Settings .....	45
SD Card Information .....	33	Events .....	46
File List .....	33	Ethernet Lost Detection .....	46
Date & Time .....	34	Settings .....	46
Current Camera Time .....	34	Face Detection .....	47



Tampering Detection .....	48
Settings.....	48
Event Actions (Advanced) .....	49
When Face Detection Triggered.....	49
When Tampering Detection Triggered.....	49
System.....	50
Schedule Recording .....	50
Schedule Recording Setting.....	50

**Chapter 3:**  
**Viewing Live Video via VLC Media Player.....51**

# PREFACE

## Copyright

This publication, including all photographs, illustrations and software, is protected under international copyright laws, with all rights reserved. No part of this manual may be reproduced, copied, translated or transmitted in any form or by any means without the prior written consent from NEXCOM International Co., Ltd.

## Disclaimer

The information in this document is subject to change without prior notice and does not represent commitment from NEXCOM International Co., Ltd. However, users may update their knowledge of any product in use by constantly checking its manual posted on our website: <http://www.nexcom.com>. NEXCOM shall not be liable for direct, indirect, special, incidental, or consequential damages arising out of the use of any product, nor for any infringements upon the rights of third parties, which may result from such use. Any implied warranties of merchantability or fitness for any particular purpose is also disclaimed.

## Acknowledgements

NCi-312 is a trademark of NEXCOM International Co., Ltd. All other product names mentioned herein are registered trademarks of their respective owners.

## Regulatory Compliance Statements

This section provides the FCC compliance statement for Class B devices and describes how to keep the system CE compliant.

## Declaration of Conformity

### FCC

This equipment has been tested and verified to comply with the limits for a Class B digital device, pursuant to Part 15 of FCC Rules. These limits are designed to provide reasonable protection against harmful interference when the equipment is operated in a commercial environment. This equipment generates, uses, and can radiate radio frequency energy and, if not installed and used in accordance with the instructions, may cause harmful interference to radio communications. Operation of this equipment in a residential area (domestic environment) is likely to cause harmful interference, in which case the user will be required to correct the interference (take adequate measures) at their own expense.

### CE

The product(s) described in this manual complies with all applicable European Union (CE) directives if it has a CE marking. For computer systems to remain CE compliant, only CE-compliant parts may be used. Maintaining CE compliance also requires proper cable and cabling techniques.

## RoHS Compliance



### **NEXCOM RoHS Environmental Policy and Status Update**

This publication, including all photographs, illustrations and software, is protected under international copyright laws, with all rights reserved. No part of this manual may be reproduced, copied, translated or transmitted in any form or by any means without the prior written consent from NEXCOM International Co., Ltd.

RoHS restricts the use of Lead (Pb) < 0.1% or 1,000ppm, Mercury (Hg) < 0.1% or 1,000ppm, Cadmium (Cd) < 0.01% or 100ppm, Hexavalent Chromium (Cr6+) < 0.1% or 1,000ppm, Polybrominated biphenyls (PBB) < 0.1% or 1,000ppm, and Polybrominated diphenyl Ethers (PBDE) < 0.1% or 1,000ppm.

In order to meet the RoHS compliant directives, NEXCOM has established an engineering and manufacturing task force to implement the introduction of green products. The task force will ensure that we follow the standard NEXCOM development procedure and that all the new RoHS components and new manufacturing processes maintain the highest industry quality levels for which NEXCOM are renowned.

The model selection criteria will be based on market demand. Vendors and suppliers will ensure that all designed components will be RoHS compliant.

### **How to recognize NEXCOM RoHS Products?**

For existing products where there are non-RoHS and RoHS versions, the suffix "(LF)" will be added to the compliant product name.

All new product models launched after January 2006 will be RoHS compliant. They will use the usual NEXCOM naming convention.

## Warnings

Read and adhere to all warnings, cautions, and notices in this guide and the documentation supplied with the chassis, power supply, and accessory modules. If the instructions for the chassis and power supply are inconsistent with these instructions or the instructions for accessory modules, contact the supplier to find out how you can ensure that your computer meets safety and regulatory requirements.

## Cautions

Electrostatic discharge (ESD) can damage system components. Do the described procedures only at an ESD workstation. If no such station is available, you can provide some ESD protection by wearing an antistatic wrist strap and attaching it to a metal part of the computer chassis.

## Safety Information

Before installing and using the device, note the following precautions:

- Read all instructions carefully.
- Do not place the unit on an unstable surface, cart, or stand.
- Follow all warnings and cautions in this manual.
- When replacing parts, ensure that your service technician uses parts specified by the manufacturer.
- Avoid using the system near water, in direct sunlight, or near a heating device.
- The load of the system unit does not solely rely for support from the rackmounts located on the sides. Firm support from the bottom is highly necessary in order to provide balance stability.
- The network camera is provided with a battery-powered real-time clock circuit. There is a danger of explosion if battery is incorrectly replaced. Replace only with the same or equivalent type recommended by the manufacturer. Discard used batteries according to the manufacturer's instructions.

## Installation Recommendations

Ensure you have a stable, clean working environment. Dust and dirt can get into components and cause a malfunction. Use containers to keep small components separated.

Adequate lighting and proper tools can prevent you from accidentally damaging the internal components. Most of the procedures that follow require only a few simple tools, including the following:

- A Philips screwdriver
- A flat-tipped screwdriver
- A grounding strap
- An anti-static pad

Using your fingers can disconnect most of the connections. It is recommended that you do not use needle-nose pliers to disconnect connections as these can damage the soft metal or plastic parts of the connectors.

## Safety Precautions

1. Read these safety instructions carefully.
2. Keep this User Manual for later reference.
3. Disconnect this equipment from any power sources before cleaning. Use a damp cloth. Do not use liquid or spray detergents for cleaning.
4. For plug-in equipment, the power outlet socket must be located near the equipment and must be easily accessible.
5. Keep this equipment away from humidity.
6. Put this equipment on a stable surface during installation. Dropping it or letting it fall may cause damage.
8. Make sure the voltage of the power source is correct before connecting the equipment to the power source.
10. All cautions and warnings on the equipment should be noted.
11. If the equipment is not used for a long time, disconnect it from the power source to avoid damage by transient overvoltage.
12. Never pour any liquid into an opening. This may cause fire or electrical shock.
13. Never open the equipment. For safety reasons, the equipment should be opened only by qualified service personnel.
14. If one of the following situations arises, get the equipment checked by service personnel:
  - a. The power cord or plug is damaged.
  - b. Liquid has penetrated into the equipment.
  - c. The equipment has been exposed to moisture.
  - d. The equipment does not work well, or you cannot get it to work according to the user's manual.
  - e. The equipment has been dropped and damaged.
  - f. The equipment has obvious signs of breakage.
15. Do not place heavy objects on the equipment.
17. CAUTION: DANGER OF EXPLOSION IF BATTERY IS INCORRECTLY REPLACED. REPLACE ONLY WITH THE SAME OR EQUIVALENT TYPE RECOMMENDED BY THE MANUFACTURER. DISCARD USED BATTERIES ACCORDING TO THE MANUFACTURER'S INSTRUCTIONS.



## Technical Support and Assistance

1. For the most updated information of NEXCOM products, visit NEXCOM's website at [www.nexcom.com](http://www.nexcom.com).
2. For technical issues that require contacting our technical support team or sales representative, please have the following information ready before calling:
  - Product name and serial number
  - Detailed information of the peripheral devices
  - Detailed information of the installed software (operating system, version, application software, etc.)
  - A complete description of the problem
  - The exact wordings of the error messages

### Warning!

1. Handling the unit: carry the unit with both hands and handle it with care.
2. Maintenance: to keep the unit clean, use only approved cleaning products or clean with a dry cloth.

## Conventions Used in this Manual



### Warning:

Information about certain situations, which if not observed, can cause personal injury. This will prevent injury to yourself when performing a task.



### Caution:

Information to avoid damaging components or losing data.

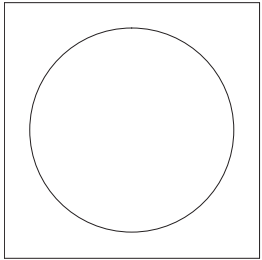


### Note:

Provides additional information to complete a task easily.

## Package Contents

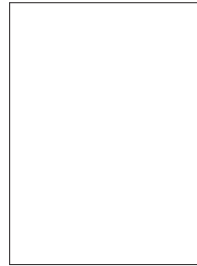
The NCI-312 package contains the following accessories:



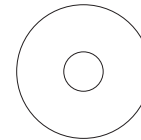
Placement sticker



Screw kit



Quick guide



CD (User Manual)

# CHAPTER 1: PRODUCT INTRODUCTION

## Overview



## Key Features

- 3MP @20fps, Full 1080P @30fps
- Fix lens 3.6mm (option 2.8mm) F1.8
- DWDR
- Compact recessed in-ceiling design
- Support 0°C~60°C / 32°F~140°F

## Hardware Specifications

### Camera

- Image sensor: 1/3" 3megapixel progressive scan CMOS sensor
- Minimum Illumination: B/W 0.05 lux/ color 0.1 lux
- Field of view: diagonal 100.2°/ horizontal 77°/ vertical 54°
- Lens: 3.6mm F1.8 fixed lens, 2.8mm F2.0 fixed lens (optional)
- Iris type: Fixed iris
- Day and night: Yes (digital D/N)
- WDR: Yes (DWDR)
- Image Enhancement
  - Brightness, Contrast, Saturation, Sharpness, Backlight compensation, Mirror, Flip, Day/Night, Anti-flicker

### Video

- Video compression: H.264/MJPEG
- Video streaming: triple streaming
  - H.264 Stream 1/ H.264 Stream 2/ MJPEG Stream 3
- Video resolution: 2048 x 1536 to 320 x 240
- Video quality: VBR/CBR
- Frame rate
  - 2048 x 1536 @ 20 fps
  - 1920 x 1080 @ 30 fps
  - 1280 x 720 @ 30 fps
  - 720 x 576 @ 30 fps
  - 720 x 480 @ 30 fps
  - 640 x 480 @ 30 fps
  - 320 x 240 @ 30 fps

### Network

- Interface: 10/100/1000 Mbps Ethernet, RJ-45

- Supported protocols: HTTP, TCP/IP, UDP, RTP, RTSP, FTP, SMTP, DHCP, DNS, DDNS, NTP, uPnP, ONVIF, IPv4/v6
- Internet Explorer (support up to IE 10), Chrome, Firefox and Safari
- Security: Multi-level passwords/ HTTP encryption

### I/O Connector

- D I/O: DIX1, DOX1
- Micro SD slot: Yes
- RJ45: Yes

### Event Management

- Event trigger: Motion detection, DI
- Notifications: Trigger alarm output, email/ FTP and record video to PC or SD card
- Post-recording: Yes
- Pre-recording: Yes

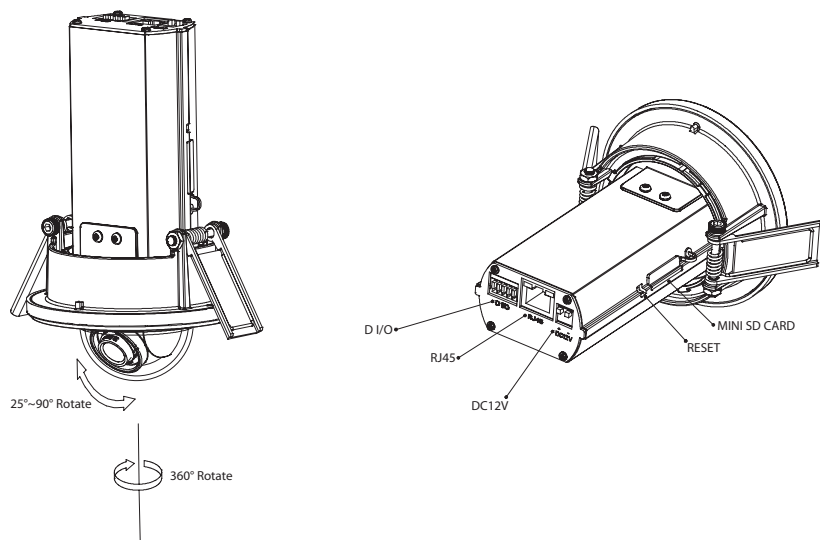
### Power

- DC: DC 12V terminal block
- PoE: Yes/ IEEE 802.3af

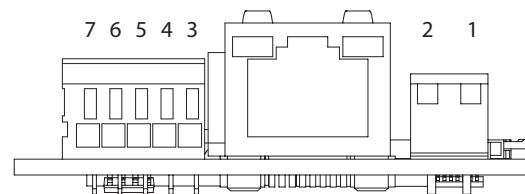
### General

- Power consumption: 6W max.
- Weight: 320g
- Dimension:  $\phi$ 91.2mm x 151.2mm (H)
- Operating Temp.: 0°C~60°C / 32°F~140°F
- Humidity: 90% RH (no condensation)
- Certification: CE/ FCC
- Application: SDK available for application development

## Physical Descriptions

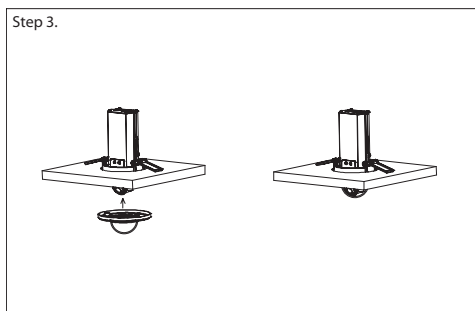
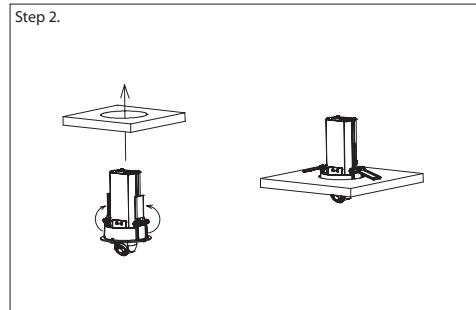
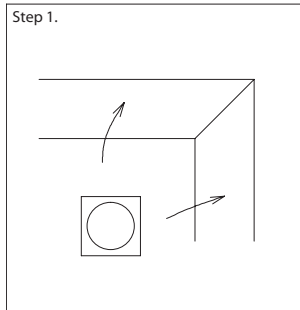


## DI/O Pinout Assignment



Pin	Description
1	DC 12V/AC 24V (-)
2	DC 12V/AC 24V (+)
3	ALM_IN (+)
4	ALM_IN (-)
5	ALM_out_NC
6	ALM_out_COM
7	ALM_out_NO

## Hardware Installation



1. Position the placement sticker at the desired installation location on the wall/ceiling. Then use a driller to drill the mountings holes on the sticker.
2. Adjust the camera angle to the desired field of view, then push down the two spring plates on the sides of the camera and slide it through the hole.
3. Replace the top cover to complete the installation.

## CHAPTER 2: CAMERA CONFIGURATION

### Accessing the Camera's Configuration Menu (Graphical User Interface)

The camera's default IP address is 192.168.1.168, make sure the IP address of the computer accessing the camera is on the same network subnet before proceeding.

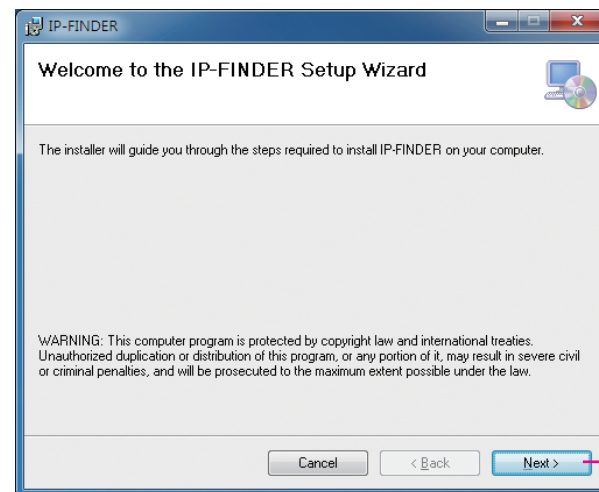
You can access the camera via a web browser or IP-FINDER software included with the camera. The following information outlines the instructions for each method.

### Installing IP-FINDER



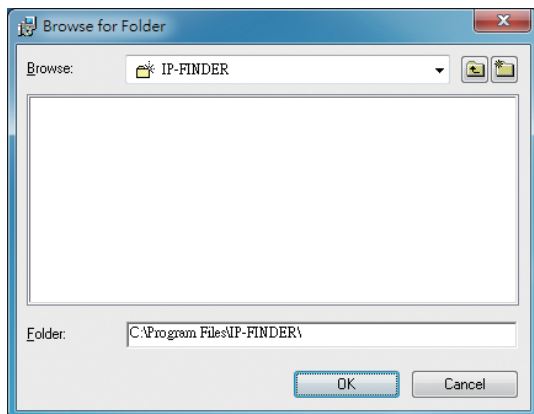
Note: If IP-FINDER is already installed, you can skip this section and continue to the next section **IP-FINDER** on page 8.

1. Locate the installation file **IP-FINDER-Setup.msi** on the CD.
2. Once located, double click on the file to start the installation program.
3. Click the **Next** button on the welcome screen to continue.

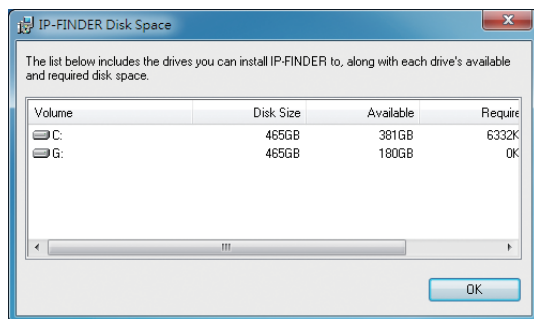


Next button

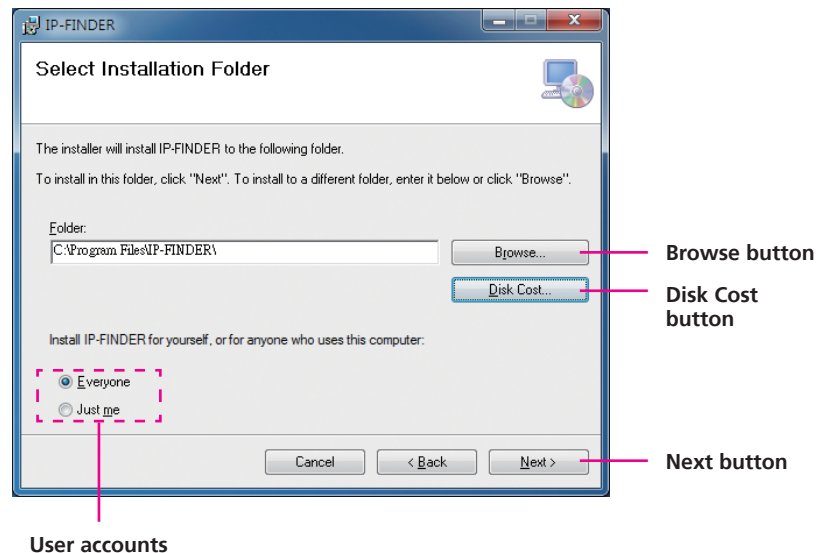
4. Confirm the directory that the program will be installed on. To specify a different folder, please click on the **Browse** button and locate the desired installation folder.



5. To check the available drives you can install the software to and their available and required disk space, please click on the **Disk Cost** button.



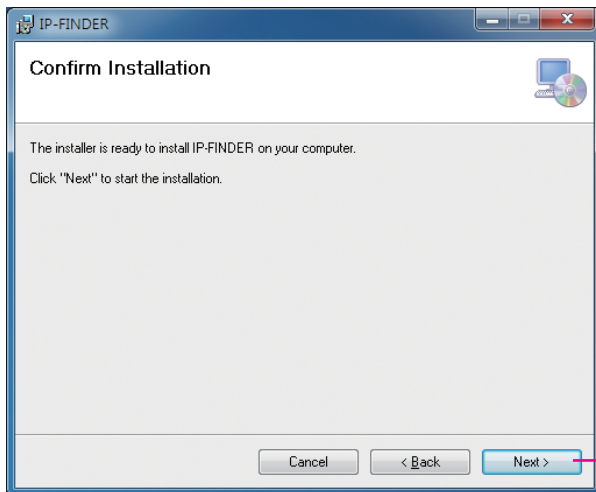
6. Specify which user accounts on the computer can access the program, the options are **Everyone** and **Just me**.



7. Click on the **Next** button to continue.

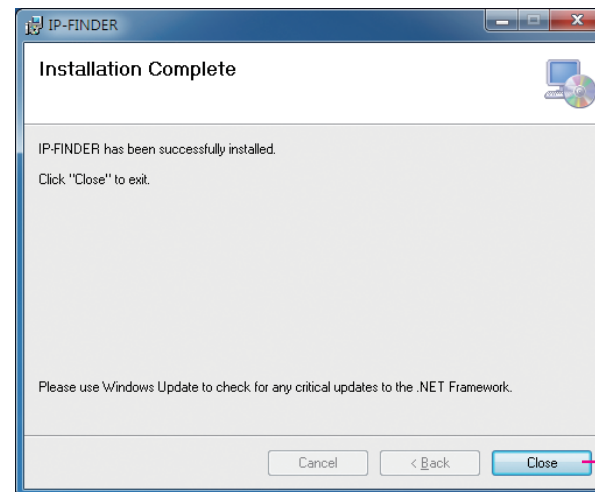


8. Click on the **Next** button to begin installation.



Next button

9. Once the installation process is complete, click on the **Close** button to finish. A shortcut will be created on the desktop.



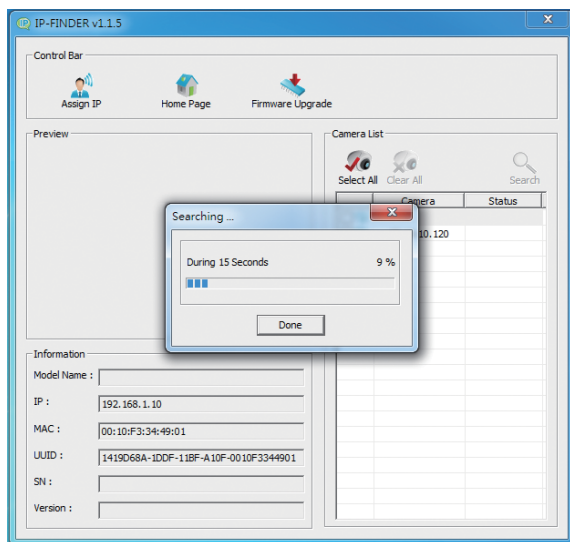
Close button

## IP-FINDER

1. Locate and open the IP-FINDER software shortcut on the desktop.



2. When the program is launched, it will begin searching the network for the IP camera automatically (the search will last for up to 90 seconds). You can also manually search cameras by clicking on the **Search** button.

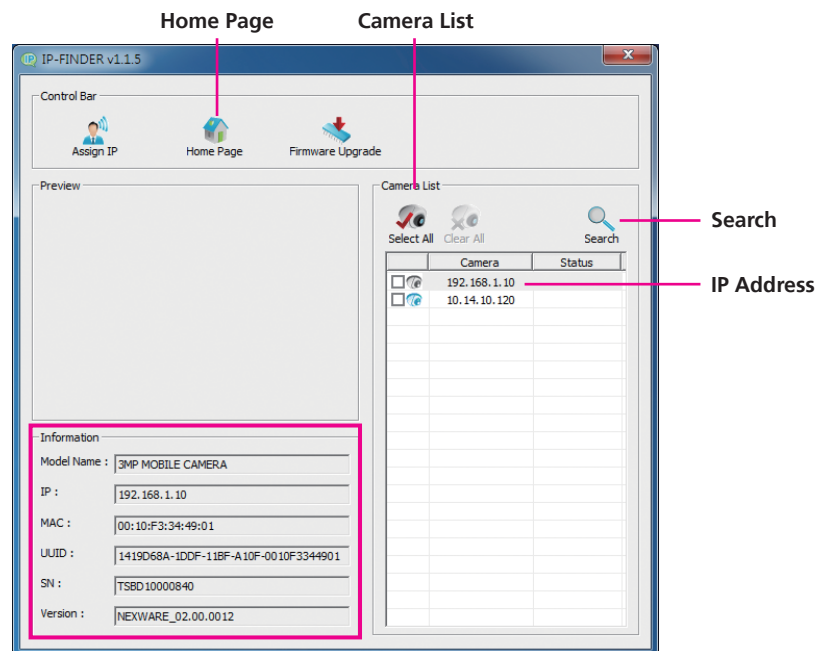


Note: Manual search will last for up to 90 seconds.

3. Once the camera is discovered, it will show the following information:

- Model name
- IP address
- MAC address
- UUID
- Serial number
- Version

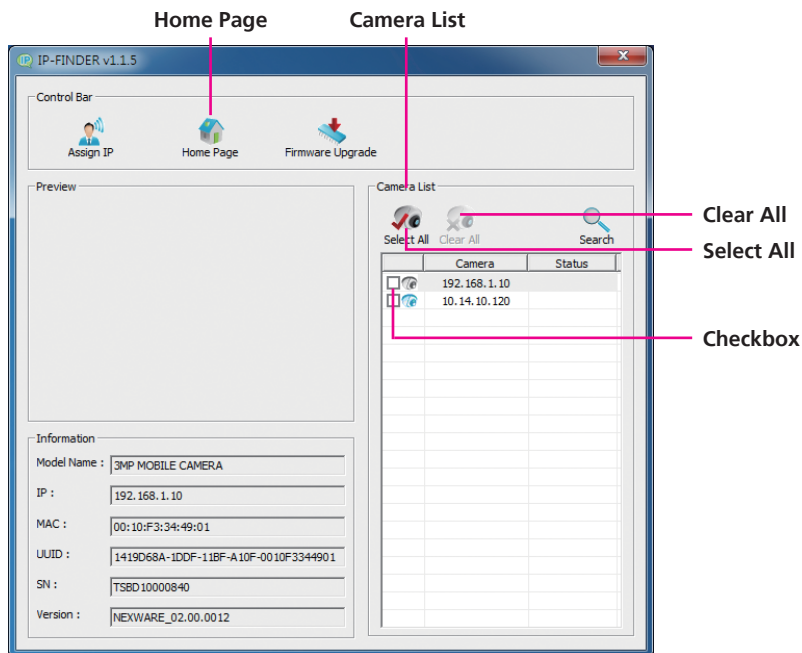
4. Click on the **Home Page** button and it will launch the camera's configuration menu via Internet Explorer. You can also access the menu by double clicking the camera's **IP address** under **Camera List**.



## Multiple Cameras

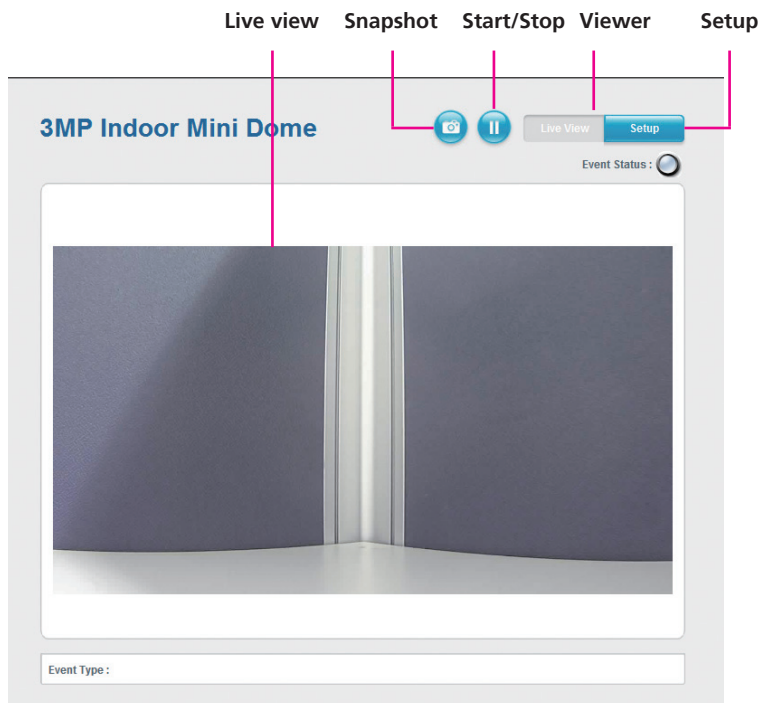
If more than one IP camera are detected, the **Camera List** will show all the available cameras on the network. To access all the cameras' configuration menu simultaneously, click on the **Select All** button to select all the cameras in the list, then click the **Home Page** button. Similarly, you can access specific ones by ticking the camera's checkbox.

To deselect, press the **Clear All** button to remove all the selection, or specific ones by unchecking the checkbox.



## Web Browser (Internet Explorer)

1. Locate and open the Internet Explorer (IE) shortcut on the desktop.
2. In the address bar, type 192.168.1.168 (default IP address of the camera) and then press the **Enter** button.
3. You will be prompted with a pop-up window asking for login information, type in "**admin**" (default login name) and "**9999**" (default password)
4. Once logged in, you will see the main screen with video stream [stream 3]



### Snapshot

Takes a image snapshot from the camera, you will be prompted to store the image file onto the computer's hard drive.

### Start/Stop

Press to stop the live video, press again to restart.

### Viewer

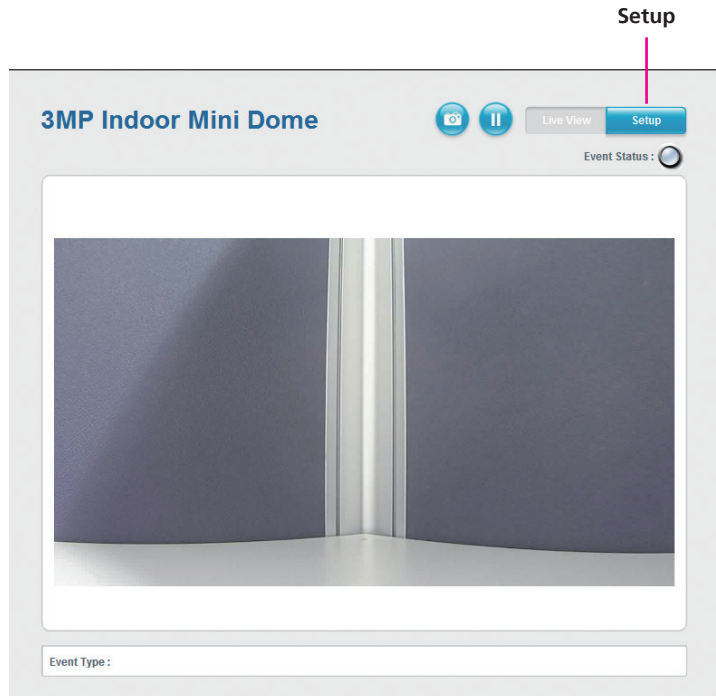
Views the live video of the camera.

### Setup

Options for configuring the IP camera.

## Configuring the Camera's Setting

1. To configure the camera's setting, click on the **Setup** button on the main screen to enter the configuration menu.



## Browsing Through the Configuration Menu

The layout of the configuration menu is split into two sections. All the camera settings are located on the left hand side of the interface, clicking it will open their corresponding sub-menu on the right.

The screenshot shows the configuration interface for a '3MP Indoor Mini Dome' camera. At the top right, there are 'Live View' and 'Setup' buttons. The left sidebar contains four main categories: 'Basic Settings', 'Network', 'Events', and 'System'. Under 'Basic Settings', there are sub-menus for 'Video', 'Network', 'Events', and 'System'. The 'Video' sub-menu is currently selected, showing a list of options: 'Video Stream', 'Camera Settings', 'Overlay Settings', and 'Privacy Mask'. The main content area is titled 'Video Stream Settings' and is divided into three sections: 'Stream-1', 'Stream-2', and 'Stream-3'. Each stream section has the following settings: H.264 codec, Resolution (dropdown), FrameRate (input field), Bit Rate Control (radio buttons for VBR and CBR), Target bit rate (input field), and GOP Length (input field). Stream-1 is set to 1920x1080 (16.9) resolution, 30 fps, VBR, 10000 kbit/s, and 1 second GOP. Stream-2 is set to 720x480 (3.2) resolution, 15 fps, VBR, 2000 kbit/s, and 1 second GOP. Stream-3 is set to MJPEG, 1280x720 (16.9) resolution, 10 fps, and Good quality. At the bottom of the main content area, there are 'Save' and 'Reset' buttons.

The following are the camera settings available on the left hand side:

- Video
  - Video Stream
  - Camera Settings
  - Overlay Settings
  - Privacy Mask
- Network
  - TCP/IP
  - FTP
  - SMTP
  - Ports
- Events
  - Motion Detection
  - Alarm In/Out Trigger
  - Event Actions
- System
  - Recording Settings
  - User Management
  - SD Card Management
  - Date & Time
  - Firmware Upgrade
  - Maintenance
- Advanced Settings

## Video

### Video Stream

This section configures the settings of the video stream. There are 3 video streams available, the live video from the main screen **Viewer** is stream 1.

#### Video Stream Settings

**Stream-1**

H.264  
 Resolution :   
 FrameRate :  fps ( Range = 5-60fps )  
 Bit Rate Control :  
 VBR  
 CBR Target bit rate :  kbit/s ( Range = 30-20000 kbit/s )

GOP Length :  seconds

---

**Stream-2**

H.264  
 Resolution :   
 FrameRate :  fps ( Range = 0-30fps / Stream off = 0 )  
 Bit Rate Control :  
 VBR  
 CBR Target bit rate :  kbit/s ( Range = 30-10000 kbit/s )

GOP Length :  seconds

---

**Stream-3**

MJPEG  
 Resolution :   
 FrameRate :  fps ( Range = 0-30fps / Stream off = 0 )  
 Quality :

### Stream 1 (H.264)

#### Resolution

Configures the resolution of the video stream. The options are **2048x1536 (4:3)** and **1920x1080 (16:9)**.

#### FrameRate

Adjusts the frame rate of the video stream, the range is 5~60FPS.

#### Bit Rate Control

Configures the Bit Rate Control mode as **VBR** (variable bit rate), or **CBR** (constant bit rate) for the stream.

#### Target Bit Rate

If the Bit Rate Control is set to **CBR**, you can manually set the bit rate in this field, the range is 30~20000kbit/s.

#### GOP Length

Configures the GOP length of the stream. The options are **0.5, 1, 2, 3** and **4**, setting "**0.5 seconds**" will yield the best video quality.

## Stream 2 (H.264)

### Resolution

Configures the resolution of the video stream. The available options are **1280x720(16:9)**, **720x480(3:2)**, **720x576(5:4)**, **640x480(4:3)** and **320x240(4:3)**.

### FrameRate

Adjusts the frame rate of the video stream. Setting **0** will disable the stream.

### Bit Rate Control

Configures the Bit Rate Control mode as **VBR** (variable bit rate), or **CBR** (constant bit rate) for the stream.

### Target Bit Rate

If the Bit Rate Control is set to **CBR**, you can manually set the bit rate in this field, the range is 30~10000kbit/s.

### GOP Length

Configures the GOP length of the stream. The options are **0.5**, **1**, **2**, **3** and **4**, setting "**0.5 seconds**" will yield the best video quality.

## Stream 3 (MJPEG)

### Resolution

Displays the resolution of the video stream.

### FrameRate

Adjusts the frame rate of the video stream. Setting **0** will disable the stream.

### Quality

Configures the video quality of the stream. The options are **Best**, **Good** and **Normal**.

### Save

Save button to apply the configurations, click on this button once all the settings are confirmed for the new changes to take effect.

### Reset

Reset button to discard all the settings applied.



## Camera Settings

This section adjusts the camera's image settings.

### Camera Settings

[Quick viewer](#)

#### Image Adjustment

Brightness :    ( Range = 0~255 )

Contrast :    ( Range = 0~255 )

Color Saturation :    ( Range = 0~255 )

Sharpness :    ( Range = 0~255 )

#### Mirror & Flip

Enable mirror

Enable flip

#### Wide Dynamic Range (WDR)

WDR mode :  ▼

Schedule WDR :

Start time :  :  End time :  :  Use mode :  ▼

Please set the non-specified time range, use mode :  ▼

#### White Balance

White balance mode :  ▼

## Image Adjustments

### Brightness

Configures the brightness of the image, the range is 0 ~ 255, with 0 being the lowest brightness. Press the < button to decrease the value, or > button to increase the value. The default value is 128.

### Contrast

Configures the contrast of the image, the range is 0 ~ 255, with 0 being the lowest contrast. Press the < button to decrease the value, or > button to increase the value. The default value is 128.

### Color Saturation

Configures the color saturation of the image, the range is 0 ~ 255, with 0 being the lowest saturation. Press the < button to decrease the value, or > button to increase the value. The default value is 128.

### Sharpness

Configures the sharpness of the image, the range is 0 ~ 255, with 0 being the lowest sharpness. Press the < button to decrease the value, or > button to increase the value. The default value is 128.

### Default

Default button to discard all the settings applied to Image Adjustments.

## QuickViewer

Click this button to open up a small preview window of the live video, you can view the image as you make image adjustments. Click the **Save** button for the changes to take effect.



## Mirror & Flip

### Enable Mirror

Flip the camera image horizontally.

### Enable Flip

Flip the camera image vertically.

## Wide Dynamic Range (WDR)

### WDR Mode

Enables or disables WDR function, enable this option if the camera is exposed to bright backlight, glare or high contrast lighting. You can specify the WDR contrast level as **low**, **middle** or **high**. Selecting **high** will produce the best image quality.

### Schedule WDR

Enables or disables WDR function to activate at the specified time. You can configure the **Start Time** and **End Time** in 24-hour format.

### Use Mode (During Scheduled Hours)

Selects the WDR contrast level to use during the scheduled time.

### Use Mode (Outside of the Scheduled Hours)

Selects the WDR contrast level to use outside of the scheduled time.

## Camera Settings Cont.

### White Balance

White balance mode :

### Exposure

Exposure mode :

Exposure value adjust :  ( Range = 0~255 )

Enable slow shutter

Maximum exposure time :

Enable sens up

Maximum sens up gain :

Enable backlight compensation

### Day & Night

Auto

Forced color

Forced black & white

Schedule Day & Night :

Start time :  :  End time :  :  Use mode :

Please set the non-specified time range, use mode :

Save

Reset

## White Balance

### White Balance Mode

Enables or disables the white balance function on the camera. White balance allows the camera to produce more accurate colors under different lighting conditions. The following modes can be selected:

- Off: Disables white balance function.
- Auto: Automatically adjusts the white balance to suit the current lighting condition.
- Fixed Outdoor: Adjusts the white balance for outdoor daylight.
- Incandescent: Adjusts the white balance for indoor light.
- Fluorescent: Adjusts the white balance for fluorescent light.

## Exposure

### Exposure Mode

This option configures the anti-flickering function of the camera. If the image is suffering from flickering under fluorescent light, selecting **Auto** will allow the camera to automatically adjust the light frequency to match the current fluorescent lighting condition and prevent flickering. You can also manually set it to **Anti-Flicker 50Hz**, **Anti-Flicker 60Hz** or **Locked**.

### Exposure Value Adjust

Adjusts the exposure value on the camera, the range is 0 ~ 255. Press the < button to decrease the value, or > button to increase the value. The default value is 128.

### Enable Slow Shutter

Enables or disables slow shutter on the camera, you can select the shutter speed in drop the list. The options are **1/7**, **1/15**, **1/30**. Selecting a slower shutter speed will improve image quality in low light conditions, but will increase motion blur.

### Enable Sens Up

Enables or disables gain setting on the camera, you can select the maximum level of amplification in the drop down list. The options are **4x**, **8x**, **16x** and **32x**. A higher value will produce brighter images, but may also increase image noise.

### Enable Backlight Compensation

Enables or disables backlight compensation function, enable this option if an image in the camera is too dark.

## Day & Night

Configures the day and night mode of the camera.

**Auto:** Allows the camera to automatically sense the current lighting level and determine what type of color range it should display.

**Forced Color:** Forces the camera to display color regardless of the current lighting level.

**Forced Black & White:** Forces the camera to display black & white images regardless of the current lighting level.

### Schedule Day & Night

Enables day and night mode to activate at the specified time. You can configure the **Start Time** and **End Time** in 24-hour format.

### Use Mode (During Scheduled Hours)

Selects the color mode to use during the scheduled time.

### Use Mode (Outside of the Scheduled Hours)

Selects the color mode to use outside of the scheduled time.

### Save

Save button to apply the configurations, click on this button once all the settings are confirmed for the new changes to take effect.

### Reset

Reset button to discard all the settings applied.

## Overlay Settings

This section configures the text displayed on the live video in **Viewer**.

### Overlay Settings

#### Contents

Enable date

Enable time

Enable text :

Display Camera Name

Save

Reset

## Contents

### Enable Date

Enables or disables the **Viewer** to display the current date on the bottom right corner.

### Enable Time

Enables or disables the **Viewer** to display the current time on the bottom right corner.

### Enable Text

Enables or disables the **Viewer** to display text on the bottom left corner. The text displayed can be configured in the field box.

### Display Camera Name

Enables or disables the **Viewer** to display the camera's name on the bottom left corner. The name displayed can be configured in the **Maintenance** menu. For information on **Maintenance** menu, please refer to page 37.

### Save

Save button to apply the configurations, click on this button once all the settings are confirmed for the new changes to take effect.

### Reset

Reset button to discard all the settings applied.

## Privacy Mask

This section configures which area of the live video in **Viewer** will be masked for privacy. A total of 3 privacy masks can be configured.

### Privacy Mask

#### Settings

Privacy mask color :

#### Mask Zones

- Enable mask zone 1**
- Enable mask zone 2**
- Enable mask zone 3**



## Settings

### Privacy Mask Color

Selects the color of the privacy mask. The available colors are **Black** and **White**.

## Mask Zones

You can configure up to 3 privacy masks, the instructions below illustrate how to setup 3 privacy masks.

1. Select the color of the mask in the drop down list.
2. To create the first mask, check the **Enable mask zone 1**, and on the live video screen below, select the area to mask by holding down the mouse button and drag to make a rectangular square, release the button once the desired area is covered.
3. Press the **Setting Area** button in **Enable mask zone 1** to set this area as mask.
4. You will see the selected area turn black or white, depending on which color was chosen (This example uses black as the mask color).

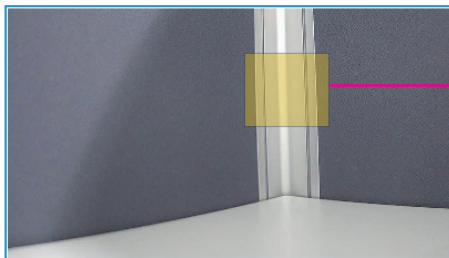
### Privacy Mask

#### Settings

Privacy mask color : Black ▼

#### Mask Zones

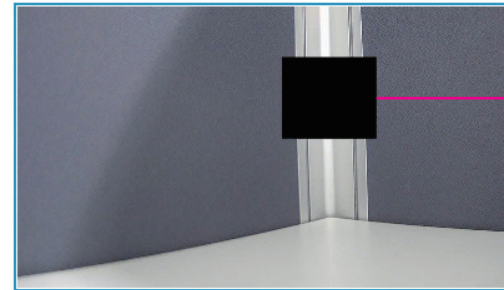
- Enable mask zone 1** Setting Area Remove
- Enable mask zone 2** Setting Area Remove
- Enable mask zone 3** Setting Area Remove



Rectangular square

#### Mask Zones

- Enable mask zone 1** Setting Area Remove
- Enable mask zone 2** Setting Area Remove
- Enable mask zone 3** Setting Area Remove



Mask area

5. To create the second and third mask, check the **Enable mask zone 2** and **Enable mask zone 3** options, then repeat steps 2 to 3 outlined earlier.

To delete a mask, check the zone number you like to remove, and press the **Remove** button.

## Network

### TCP/IP

This section configures the network settings of the camera.

#### TCP/IP

##### IP Address Configuration

Enable DHCP

Static IP address

IP Address :

Subnet Mask :

Default Gateway :

Primary DNS Server :

Secondary DNS Server :

Enable IPv6

IP Address :

##### Current Network Settings

IP Address : 192.168.1.168

Subnet Mask : 255.255.255.0

Default Gateway : 192.168.1.254

Primary DNS Server : 192.168.1.1

Secondary DNS Server : 192.168.1.2

Save

Reset

### IP Address Configuration

#### Enable DHCP

Enables DHCP, use this feature if the camera is connected to a network with DHCP server.

#### Static IP Address

To manually configure an IP address, select this option and input the IP address, subnet mask, default gateway, primary and secondary DNS server address.

#### Enable IPv6

To manually configure an IPv6 address, select this option and input the IPv6 address.

### Current Network Settings

Displays the current IP address, subnet mask, default gateway, primary and secondary DNS server address of the camera.

#### Save

Save button to apply the configurations, click on this button once all the settings are confirmed for the new changes to take effect.

#### Reset

Reset button to discard all the settings applied.



## FTP

This section configures the FTP server address that the camera will connect to.

### FTP

**FTP Server**

Host name or IP address :

Upload path :

Port Number :

**Login Information**

User Name :

Password :

**Test Remote FTP server**

Server status :

## FTP Server

### Host Name or IP Address

Specify the host name or IP address of the FTP server.

### Upload Path

Specify the directory that the camera will upload data to.

### Port Number

Specify the port number of the FTP server.

## Login Information

### Username

Specify the login username for the FTP server.

### Password

Specify the login password for the FTP server.

## Test Remote FTP Server

### Server Status:

Displays the status of the test connection.

### FTP Test

Tests the network connection between the camera and FTP server.

### Save

Save button to apply the configurations, click on this button once all the settings are confirmed for the new changes to take effect.

### Reset

Reset button to discard all the settings applied.

## SMTP

This section configures the SMTP mail server address that the camera will use for sending emails.

### SMTP

**SMTP Server**

Mail server :  (Host name or IP address)

Port Number :

**Login Information**

User Name :

Password :

Email address from :

**To Mail Address**

Mail address :

Mail Test Status :

## SMTP Server

### Mail Server

Specify the host name or IP address of the SMTP mail server.

### Port Number

Specify the port number of the SMTP mail server.

## Login Information

### Username

Specify the login username for the SMTP mail server.

### Password

Specify the login password for the SMTP mail server.

### Email Address From

Specify the email address of the sender.

### To Mail Address List

#### Mail Address

Specify the email address to send the email when an event is triggered by motion detection. Press the **Mail Test** button to test the connection to this email.

### Save

Save button to apply the configurations, click on this button once all the settings are confirmed for the new changes to take effect.

### Reset

Reset button to discard all the settings applied.

## Ports

This section configures the HTTP port number of the web configuration menu and RTSP port number of stream 1 to 3.

### Ports

#### HTTP

HTTP port:  ( Range = 80 / 1025~65535 )

#### RTSP

Stream 1 RTSP port:   
 Path:   
 Stream 2 RTSP port:   
 Path:   
 Stream 3 RTSP port:   
 Path:   
 ( Range = 554 / 1025~65535 )



## HTTP

### HTTP Port

Configures the HTTP port number of the web configuration menu.

## RTSP

### Stream 1 to 3 RTSP Port

Configures the RTSP port number of stream 1 to 3, and displays the URL of stream 1 to 3. The range is 554/1025~65535.

Default URL of Stream 1: rtsp://cameraIP:554/live/stream1

Default URL of Stream 2: rtsp://cameraIP:8556/live/stream2

Default URL of Stream 3: rtsp://cameraIP:8555/live/stream3

### Save

Save button to apply the configurations, click on this button once all the settings are confirmed for the new changes to take effect.

### Reset

Reset button to discard all the settings applied.

## Events

### Motion Detection

This section configures which area of the live video in **Viewer** will be monitored for detecting motion.

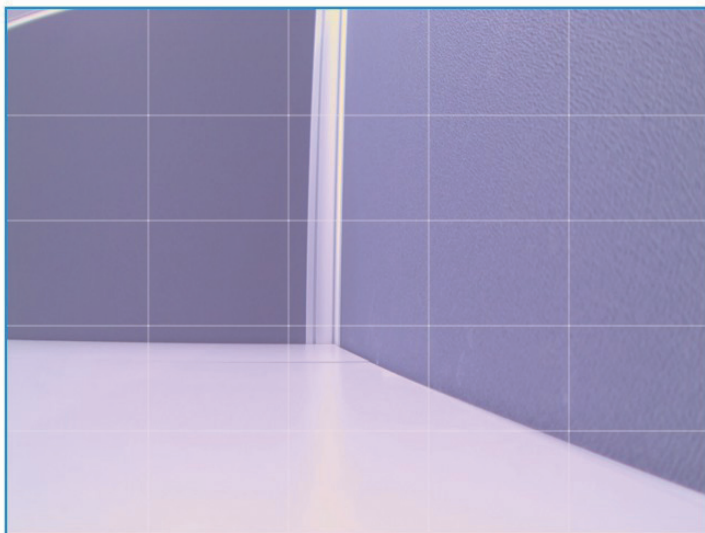
#### Motion Detection

##### Settings

Enable motion detection

Sensitivity :  (Range : 1~100)

##### Detection Zones



Save

Reset

## Settings

### Enable Motion Detection

Enables or disables motion detection function.

### Sensitivity

Configures the sensitivity of motion detection, the sensitivity determines the amount of motion required to trigger an event, the range is 1 to 100, with 1 being the least sensitive. For more information on event, please refer to **Event Actions** on page 29.

## Detection Zones

This section shows the live video from the camera, the screen is divided into 5x5 rectangular boxes, to setup motion detection, please follow the instructions below.


1. Check the **Enable motion detection** option, and specify the sensitivity level.
2. In the live video screen below, select the desired area for motion detection by clicking on the rectangular box. The border of the box will turn red indicating that it is selected. You can select multiple boxes, up to 5x5 boxes can be selected.
3. Press the **Save** button once all the desired areas are selected for the changes to take effect.

### Motion Detection

**Settings**

Enable motion detection  
Sensitivity :  (Range : 1~100)

**Detection Zones**



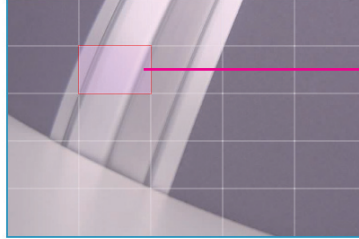
Highlighted box

### Motion Detection

**Settings**

Enable motion detection  
Sensitivity :  (Range : 1~100)

**Detection Zones**



Area with motion detect enabled

To remove motion detection from an area, click the box to deselect it, then press the **Save** button for the changes to take effect.

## Alarm In/Out Trigger

This section configures the IP camera to work with external alarm in/out devices.

### Alarm In Out Actions

#### Alarm In Control

Alarm In mode

Alarm In Level

#### Alarm Out Control

Alarm Out mode

Alarm Out level



## Alarm In Control

### Alarm In Mode

Enables or disables monitoring of alarm input. Enables this option if an external sensor device connected to the alarm input requires monitoring.

### Alarm In Level

Specify the signal level required for triggering the alarm device connected to the alarm output. The options are **Low** and **High**.

## Alarm Out Control

### Alarm Out Mode

Specify the alarm out mode, the options are **User Mode** and **Event Mode**. When **User Mode** is selected, the alarm output will be triggered based on user configurations. When **Event Mode** is selected, the alarm output will be triggered based on the configurations set in **Event Actions**. For more information on **Event Actions**, please refer to page 29.

### Alarm Out Level

Specify the alarm output action to perform when it is triggered. The options are **Low** and **High**.

### Save

Save button to apply the configurations, click on this button once all the settings are confirmed for the new changes to take effect.

### Reset

Reset button to discard all the settings applied.

## Event Actions

This section configures what actions to perform when motion detection or alarm in is triggered.

### Event Actions

#### When Motion Detection Triggered...

- Save stream to SD card  
File format:
- Upload stream to FTP server  
File format:
- Send email notification
- Alarm Output

#### When Alarm In Triggered...

- Save stream to SD card  
File format:
- Upload stream to FTP server  
File format:
- Send email notification
- Alarm Output



## When Motion Detection Triggered

### Save Stream to SD Card

Check this option to store the video stream onto the SD card. Select the desired file format in the drop down menu, the options are **AVI** and **JPEG**.

### Upload Stream to FTP Server

Check this option to upload the video stream to a FTP server. Select the desired file format in the drop down menu, the options are **AVI** and **JPEG**. For information on configuring the FTP server, please refer to **FTP** on page 23.

### Send Email Notification

Check this option to send an email notifying the event, for more information on configuring the email address, please refer to **SMTP** on page 24.

### Alarm Output

Check this option to activate the device connected to alarm output when motion detection is triggered.

## When Alarm In Triggered

### Save Stream to SD Card

Check this option to store the video stream onto the SD card. Select the desired file format in the drop down menu, the options are **AVI** and **JPEG**.

### Upload Stream to FTP Server

Check this option to upload the video stream to a FTP server. Select the desired file format in the drop down menu, the options are **AVI** and **JPEG**. For information on configuring the FTP server, please refer to **FTP** on page 23.

### **Send Email Notification**

Check this option to send an email notifying about the alarm event, for more information on configuring the email address, please refer to **SMTP** on page 24.

### **Alarm Output**

Check this option to activate the device connected to alarm output when alarm in is triggered.

### **Save**

Save button to apply the configurations, click on this button once all the settings are confirmed for the new changes to take effect.

### **Reset**

Reset button to discard all the settings applied.



## System

### Recording Settings

This section is used to configure the recording settings of the IP camera.

#### Recording Settings

##### AVI File Setting

Stream Source :

Save

Reset

### AVI File Setting

#### Stream Source

Selects which video stream number to record, the options are **Stream 1** and **Stream 2**.

#### Save

Save button to apply the configurations, click on this button once all the settings are confirmed for the new changes to take effect.

#### Reset

Reset button to discard all the settings applied.

## User Management

This section is used to manage user accounts for accessing the IP camera's web configuration menu.

### User Management

#### Add / Modify User Accounts

User Name	Password	Confirm Password	Authority	User Information
<input type="text"/>	<input type="password"/>	<input type="password"/>	-- ▾	<input type="text"/>

(Username and password must be for least 1 characters.)

#### User List

User Name	User Group	User Information	Edit User	Delete User
admin	Administrator	Administrator	<input type="button" value="Edit"/>	



## Add/Modify User Accounts

To add a user account, type in the username and password (username and password must be at least 1 character), retype the password to confirm, then choose the access level for the account in the **Authority** drop down list. You can also provide a description for the account under the **User Information** field.

### Access Level

**Administrator:** Has full control (read/write) over every configuration menu item.

**Operator:** Has full control (read/write) over every configuration menu item in **Video** and **Event** only.

**Viewer:** Only has access (read) to the live view of the camera (main screen).

## User List

Displays user accounts available on the camera, to edit an account's password, click the **Edit** button, then retype the new password in the **Password** and **Confirm Password** fields.

### Save

Save button to apply the configurations, click on this button once all the settings are confirmed for the new changes to take effect.

### Reset

Reset button to discard all the settings applied.

## SD Card Management

This section is used to manage the SD card.

### SD Card Management

#### SD Card Information

Path :

Format

SD card is unavailable

SD card available : NO SD

SD card use% : NO SD

SD Card Overwrite :  OFF  ON

Save

#### File List

Folder Name

Filename	Date	Time	Size	Action
----------	------	------	------	--------

## SD Card Information

If a SD card is installed, this section will display information on the availability of the SD card, and the percentage of the total storage used.

### Format

Formats the SD card, all data stored on the SD card will be erased if this option is used.

### SD Card Overwrite

Enables or disables overwrite protection for the SD card. Press the **Save** button to apply the setting.

### File List

Displays the information of the folders and files stored in the SD card.

## Date & Time

This section configures the date and time on the camera.

### Date & Time

#### Current Camera Time

Date : 2011/05/11 Wed

Time : 13:27:52

#### Time Settings

Time mode :

Synchronize with NTP server

Synchronize with computer time

Manually setting

Date :  /  /  Time :  :  :

Time zone :

Daylight saving

Date :  /  /  Time :  :   [ Start ]

Date :  /  /  Time :  :   [ End ]

#### Date & Time Format

Date format :

Time format :

#### NTP Server

NTP server address :  (Host name or IP address)

Save

Reset

## Current Camera Time

Displays the current date and time on the camera.

## Time Settings

### Synchronize with NTP Server

Select this option to synchronize the date and time with a NTP server.

### Synchronize with Computer Time

Select this option to synchronize the date and time to the computer connected to the camera.

### Manually Setting

Select this option to manually configure the date and time.

### Time Zone

Select the time zone relevant to your location in the drop down list.

### Daylight Saving

Select this option to enable daylight saving. The Start/End date and time for daylight saving can be manually configured in the text boxes beneath the option.

## Date & Time Format

### Date Format

Configures the format that the date will be displayed in. The options are **YYYY/MM/DD**, **MM/DD/YYYY** and **DD/MM/YYYY**.

### Time Format

Configures the format that the time will be displayed in. The options are **12Hrs** and **24Hrs**.

## NTP Server

### NTP Server Address

If **Synchronize with NTP Server** is selected as the time mode, type in the host name or IP address of the NTP server.

### Save

Save button to apply the configurations, click on this button once all the settings are confirmed for the new changes to take effect.

### Reset

Reset button to discard all the settings applied.

## Firmware Upgrade

This section is used to update the IP camera's firmware.

### Firmware Upgrade

#### Firmware Version

Application version : NexWare\_02.00.0005

#### Firmware Update

Specify the firmware image file to upgrade :

## Firmware Version

### Application Version

Displays the current firmware version.

## Update

### Specify the Firmware Image File to Upgrade

To update the camera's firmware, click on the **Browse** button and locate the firmware image file, once the file is selected, press the **Update** button to begin.



The firmware update process will take around 15 minutes to complete, during this time, do not disconnect the network cable, reset or power off the IP camera, as you may damage the device.

## Maintenance

This section is used to restart the IP camera, or restore it to factory default settings.

### Maintenance

#### Maintain

Restart

Reboot the camera.

Reset to Default

Resets all camera parameters to the factory default settings.

#### Camera Name Settings

Camera Name :

Save

Reset

## Maintain

### Restart

Click this button to reboot the camera.

### Reset to Default

Click this button to restore all the camera's setting back to factory default.

## Camera Name Settings

### Camera Name

Specify a name for the camera. The name will be displayed in the upper left corner on the live video stream of the camera. To enable this, make sure the option **Display Camera Name** in the **Overlay Settings** menu is checked. For information on the **Overlay Settings** menu, please refer to page 19.

### Save

Save button to apply the configurations, click on this button once all the settings are confirmed for the new changes to take effect.

### Reset

Reset button to discard all the settings applied.

## Advanced Settings

This section is used to configure advanced settings of the IP camera.

**3MP Indoor Mini Dome** Live View Setup

**Advanced Settings**

**Video**

Camera Settings  
ROI  
AE Weights

**Network**

DDNS  
SNMP  
Multicast

**Events**

Ethernet Lost Detection  
Face Detection  
Tampering Detection  
Event Actions

**System**

Schedule Recording

**Basic Settings**

**Advanced Camera Settings** Quick viewer

**Chroma & Sharpness Suppression**

Enable chroma suppression  
 Enable sharpness suppression

**Manual White Balance**

R/G gain:  ( Range = 0.0-4.0 )  
B/G gain:  ( Range = 0.0-4.0 )

Note : Manual White Balance will be enabled while "White balance mode" on basic settings is "off"

**Manual Exposure & Gain**

Manual gain:  ( Range = 1-512 )  
Manual exposure time : 1 /  s ( Range = 7-20000 )

Note : Manual exposure will be enabled while "Exposure mode" on basic settings is "Locked"

**Auto Exposure Configuration**

Maximum exposure time : 1 /  s ( Range = 7-60 )  
Maximum sens up gain :  ( Range = 1-512 )

Note : "Exposure mode" on basic settings must be "non-Locked", "slow shutter" or "sens up" is "User define"

**Gamma Control**

Default  
 Gamma value :  ( Range = 0.01-1.00 )

Save Reset

The following are the advanced settings available on the left hand side:

- Video
  - Camera Settings
  - ROI
  - AE Weights
- Network
  - DDNS
  - SNMP
  - Multicast
- Events
  - Ethernet Lost Detection
  - Face Detection
  - Tampering Detection
  - Event Actions
- System
  - Schedule Recording
- Basic Settings



## Video

### Camera Settings (Advanced)

This section is used to adjust the camera's advanced image settings.

#### Advanced Camera Settings

[Quick viewer](#)

##### Chroma & Sharpness Suppression

- Enable chroma suppression
- Enable sharpness suppression

##### Manual White Balance

R/G gain :  ( Range = 0.0~4.0 )

B/G gain :  ( Range = 0.0~4.0 )

Note : Manual White Balance will be enabled while "White balance mode" on basic settings is "off"

##### Manual Exposure & Gain

Manual gain :  ( Range = 1~512 )

Manual exposure time : 1 /  s ( Range = 7~20000 )

Note : Manual exposure will be enabled while "Exposure mode" on basic settings is "Locked"

##### Auto Exposure Configuration

Maximum exposure time : 1 /  s ( Range = 7~60 )

Maximum sens up gain :  ( Range = 1~512 )

Note : "Exposure mode" on basic settings must be "non-Locked", "slow shutter" or "sens up" is "User define"

##### Gamma Control

- Default
- Gamma value :  ( Range = 0.01~1.00 )

[Save](#)
[Reset](#)

## Chroma & Sharpness Suppression

### Enable Chroma Suppression

Enables or disables chroma suppression. Enabling chroma suppression will reduce the image noise captured from low-light environments.

### Enable Sharpness Suppression

Enables or disables sharpness suppression. Enabling sharpness suppression will minimize the sharpness caused by noise in low-light captures.

## Manual White Balance

Note: To adjust the white balance manually, please set the **White Balance Mode** to **Off** in **Basic Settings**.

### R/G Gain

Adjusts the warm white balance, the range is 0.0 ~ 4.0 (from yellow to red).

### B/G Gain

Adjusts the cold white balance, the range is 0.0 ~ 4.0 (from green to blue).

## Manual Exposure & Gain

Note: To adjust the exposure and gain manually, please set the **Exposure Mode** to **Locked** in **Basic Settings**.

### Manual Gain

Adjusts the camera's gain manually, the range is 1 ~ 512. Setting a higher value will increase the camera's signal and produce brighter images for low-light environments.

### Manual Exposure Time 1:1 and 2:1

Adjusts the camera's exposure manually, the range is 1:1/7 ~ 1:1/20000 and 2:1/7 ~ 2:1/20000, with 1/20000 being the shortest exposure length.

## Auto Exposure Configuration

### Maximum Exposure Time

Specifies the maximum exposure time when operating in Auto Exposure mode, the range is  $1/7 \sim 1/1000$ , with  $1/1000$  being the shortest exposure length.

### Maximum Sens Up Gain

Specifies the maximum gain when operating in Auto Exposure mode, the range is  $1 \sim 512$ , with 1 being the lowest gain.

## Gamma Control

### Default

Activates the default gamma state.

### Gamma

Adjusts the gamma manually, the range is  $0.01 \sim 1.00$ , with 0.01 being the lowest value.

## ROI

You can configure up to 5 ROI zones. ROI is used to select which areas will be monitored and recorded with higher image quality while using lower image quality for other non-ROI zones to save bandwidth and storage. The instructions below illustrate how to setup 5 ROI zones.

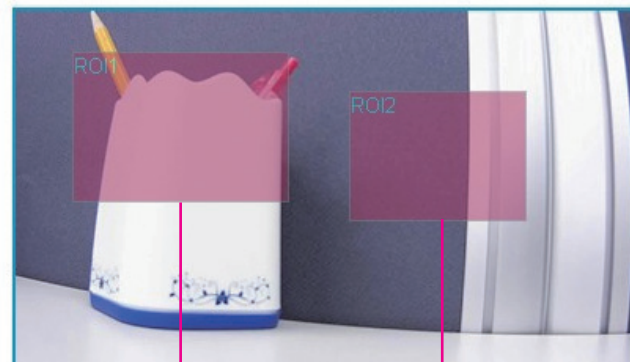
1. To create ROI zone 1, check the **Enable ROI zone 1**, and on the live video screen, select the area to set the ROI by holding down the mouse button and drag to make a rectangular square, release the button once the desired area is covered.
2. Press the **Setting Area** button in **Enable ROI zone 1** to set this area as the ROI.
3. Repeat the above steps to create ROI for zones 2 to 5.

To delete an area, check the ROI zone number you like to remove, and press the **Remove** button.

## ROI

### Region of interest configuration

<input checked="" type="checkbox"/> Enable ROI zone 1	Setting Area	Remove
<input checked="" type="checkbox"/> Enable ROI zone 2	Setting Area	Remove
<input type="checkbox"/> Enable ROI zone 3	Setting Area	Remove
<input type="checkbox"/> Enable ROI zone 4	Setting Area	Remove
<input type="checkbox"/> Enable ROI zone 5	Setting Area	Remove



ROI zone 1

ROI zone 2

## Auto Exposure Weights

You can select up to 5 areas and configure the exposure weighting for each area manually. The weighting determines the importance of the area captured, a higher weighting value will increase the sensitivity of the auto exposure.

1. To create an auto exposure area, select **User Define** and check the **Enable Regional weighting 1**.
2. On the live video screen, select the area by holding down the mouse button and drag to make a rectangular square, release the button once the desired area is covered.
3. Press the **Setting Area** button in **Enable Regional weighting 1**.
4. Configure the weighting value in the corresponding textbox, the range is 0 ~ 10.
5. Repeat the above steps to create auto exposure weightings for zones 3 to 5.

To delete an area, check the zone number you like to remove, and press the **Remove** button.

To allow the camera to adjust the exposure automatically, select the **Auto** option.

### Background Others

Configures the weighting value of the area outside of the selected zones.

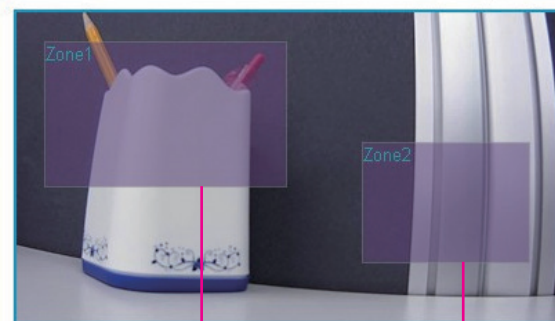
## Auto Exposure Weights

### Settings

Auto
  User define

<input checked="" type="checkbox"/> Enable Regional weighting 1	<input type="button" value="Setting Area"/>	<input type="button" value="Remove"/>	<input type="text" value="1"/>	( Range = 0~10 )
<input checked="" type="checkbox"/> Enable Regional weighting 2	<input type="button" value="Setting Area"/>	<input type="button" value="Remove"/>	<input type="text" value="5"/>	( Range = 0~10 )
<input type="checkbox"/> Enable Regional weighting 3	<input type="button" value="Setting Area"/>	<input type="button" value="Remove"/>	<input type="text" value="1"/>	( Range = 0~10 )
<input type="checkbox"/> Enable Regional weighting 4	<input type="button" value="Setting Area"/>	<input type="button" value="Remove"/>	<input type="text" value="1"/>	( Range = 0~10 )
<input type="checkbox"/> Enable Regional weighting 5	<input type="button" value="Setting Area"/>	<input type="button" value="Remove"/>	<input type="text" value="1"/>	( Range = 0~10 )

Background others :  ( Range = 0~10 )



Zone 1

Zone 2

## Network

### DDNS

This section is used to configure DDNS (Dynamic DNS).

Note: Different DDNS service provider may have different input fields.

#### DDNS

##### DDNS Settings

DDNS Service: Dyn [WebSite](#)

---

Username :

Password :

Hostname :

Internet IP Address :   Manual

Status :

### DDNS Settings

#### DDNS Service

Select the DDNS service provider from the drop down list, the available providers are **Dyn**, **NO-IP**, **dnsExit** and **DtDNS**.

#### Web Site

URL link to the selected DDNS service provider's web site.

#### Username

Username of the DDNS account.

#### Password

Password of the DDNS account.

#### Hostname

Hostname of the DDNS account.

#### Internet IP Address

Displays the IP address assigned when the connection is established.

#### Manual

Used to manually specify an IP address of a DDNS server.

#### Status

Displays the connection status of the DDNS service.

## SNMP

Simple Network Management Protocol (SNMP) is a protocol that can be used to manage and monitor SNMP-enabled devices over a network. The SNMPv1, SNMPv2 and SNMPv3 settings for the IP camera can be configured in this page.

### SNMP

#### SNMP v1 / v2

Enable SNMP v1 / v2

Read community :

Write community :

#### Traps for SNMP v1 / v2

Enable traps

Trap address :

Trap community :

#### SNMP v3

Enable SNMP v3

user name :

user password :

## SNMP v1/v2

### Enable SNMP v1/v2

Enables or disables SNMPv1 and SNMPv2 support.

### Read Community

Used to configure the read community string.

### Write Community

Used to configure the write community string.

## Traps for SNMP v1/v2

### Enable Traps

Enables the IP camera to send SNMP trap messages.

### Trap Address

Specifies the IP address of the trap server to receive the trap messages.

### Trap Community

Used to configure the trap community string.

## SNMP v3

### Enable SNMP v3

Enables or disables SNMPv3 support.

### User name

Used to configure the SNMPv3 username.

### User password

Used to configure the SNMPv3 password.

## Multicast

The IP camera's video streams can be sent to a multicast IP address group for one-to-many streaming. The multicast settings for the IP camera can be configured in this page.

### Multicast

#### Settings

Enable multicast

Group address :

Stream 1 RTP Port :

RTCP Port :

Path :

Always multicast

Stream 2 RTP Port :

RTCP Port :

Path :

Always multicast

Stream 3 RTP Port :

RTCP Port :

Path :

Always multicast

Audio RTP Port :

RTCP Port :

( RTP and RTCP Port Range = 1025~65535 )

TTL :  ( Range = 1~255 )

## Settings

### Enable Multicast

Enables or disables multicast streaming.

### Group Address

Configures the IP address of the multicast group.

### RTP Port

Configures the RTP port of the multicast address, this port is used for streaming video and audio data.

### RTCP Port

Configures the RTCP port of the multicast address, this port is used for controlling RTP streams.

### Path

Configures the URL address of the video stream.

### Always Multicast

Check this option to enable the video stream to start multicast streaming without using RTCP.

### Audio RTP Port and RTCP Port

Configures the port numbers for RTP audio and RTCP, the range is 1025 ~ 65535.

### TTL

Configures the time-to-live threshold of the multicast datagram before it is discarded by the router.

## Events

### Ethernet Lost Detection

This page is used to configure link failure detection for Ethernet.

#### Ethernet Lost Detection

##### Settings

- Enable ethernet lost detection
- Alarm Output

## Settings

### Enable Ethernet Lost Detection

Enables link failure detection of the Ethernet connection.

### Alarm Output

Enables the camera to trigger the device connected to the alarm output upon detecting failure of the Ethernet connection.



## Face Detection

You can configure the camera to detect faces and trigger the events enabled in the **Event Actions** menu on page 49. The instructions below illustrate how to setup face detection.

1. Check the **Enable Face Detection** and on the live video screen below, select the area for face recognition by holding down the mouse button and drag to make a rectangular square, release the button once the desired area is covered.
2. Press the **Setting Area** button to set this area for face recognition.

To delete the area, press the **Remove** button.

### Threshold

Configures the sensitivity of the face recognition, the range is 1~9, with 1 being the least sensitive.

### Detect Direction

Configures the direction to detect faces.

- |        |  |
|--------|--|
| Up:    | Detect faces on the top (90 degrees from the front).     |
| Right: | Detect faces on the right (180 degrees from the front).  |
| Left:  | Detect faces on the left (-180 degrees from the front).  |
| Down:  | Detect faces on the bottom (-90 degrees from the front). |

### Detection Box

Configures which detection zones are used for face recognition, the options are **Rectangle**, **ROI** and **Rectangle + ROI**.

## Face Detection

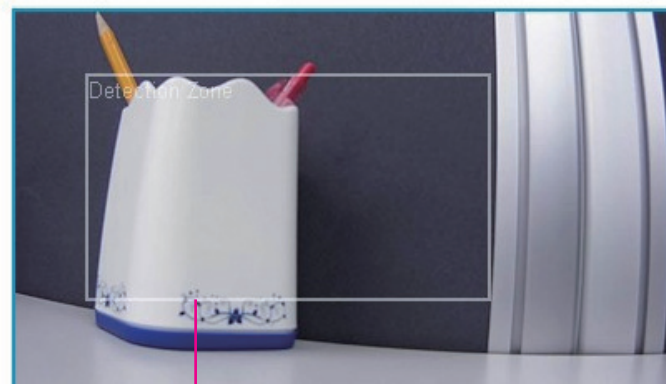
### Detection Zones

Enable Face Detection

Threshold:  ( Range = 1~9 )

Detect direction:

Detection box:



Detection Zone

## Tampering Detection

This section is used to configure tamper detection settings.

### Tampering Detection

#### Settings

Enable tampering detect

Sensitivity :  ( Range = 1~100 )

## Settings

### Enable Tampering Detect

Enables or disables tamper detection. When enabled, the camera will trigger actions enabled in the **Event Actions** menu upon detecting image blurs.

### Sensitivity

Configures the sensitivity of the tamper detection, the range is 1~100, with 1 being the least sensitive.

## Event Actions (Advanced)

This section configures what actions to perform when an event is triggered from face detection and tampering detection.

### Advanced Event Actions

#### When Face Detection Triggered...

- Save stream to SD card  
File format:
- Upload stream to FTP server  
File format:
- Send email notification
- Alarm Output

#### When Tampering Detection Triggered...

- Save stream to SD card  
File format:
- Upload stream to FTP server  
File format:
- Send email notification
- Alarm Output

## When Face Detection Triggered

### Save Stream to SD Card

Check this option to store the video stream onto the SD card. Select the desired file format in the drop down menu, the options are AVI and JPEG.

### Upload Stream to FTP Server

Check this option to upload the video stream to a FTP server. Select the desired file format in the drop down menu, the options are AVI and JPEG. For information on configuring the FTP server, please refer to FTP on page 23.

### Send Email Notification

Check this option to send an email notifying the event, for more information on configuring the email address, please refer to SMTP on page 24.

### Alarm Output

Check this option to activate the device connected to the alarm output when face detection is triggered.

## When Tampering Detection Triggered

### Save Stream to SD Card

Check this option to store the video stream onto the SD card. Select the desired file format in the drop down menu, the options are AVI and JPEG.

### Upload Stream to FTP Server

Check this option to upload the video stream to a FTP server. Select the desired file format in the drop down menu, the options are AVI and JPEG. For information on configuring the FTP server, please refer to FTP on page 23.

### Send Email Notification

Check this option to send an email notifying about the alarm event, for more information on configuring the email address, please refer to SMTP on page 24.

### Alarm Output

Check this option to activate the device connected to the alarm output when tampering detection is triggered.

# System

## Schedule Recording

This section is used to schedule the recording of the video streams.

### Schedule Recording

**Schedule Recording Setting**

Enable Schedule Recording

Daily :  
 Start time :  :  End time :  :

Weekly :

	0	1	2	3	4	5	6	7	8	9	10	11	12	13	14	15	16	17	18	19	20	21	22	23	S	D
Sun																										
Mon														E												
Tue																										
Wed																										
Thu																										
Fri																										
Sat																										

## Schedule Recording Setting

### Enable Schedule Recording

Enables or disables recording of the video stream.

### Daily

Configures the camera to record at the specified **Start Time** and **End Time**.

### Weekly

Configures the camera to record on the specified day and time of the week.

### S

Select this to set full-day recording.

### D

Select this to cancel full-day recording.

### E

Displays the end time of the recording, clicking **E** will allow you to configure the start time and end time.

## CHAPTER 3: VIEWING LIVE VIDEO VIA VLC MEDIA PLAYER

The IP camera's live video can be viewed by third party media players such as VLC media player by VideoLAN project [<http://www.videolan.org/>].

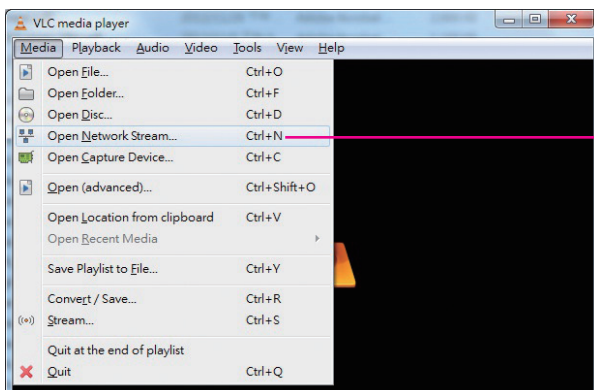
To stream the live video from the camera to VLC media player through the network, please follow the instructions below.

1. Locate and open VLC media player.
2. Go to **Media** -> **Open Network Stream**.
3. Enter the following RTSP URL:

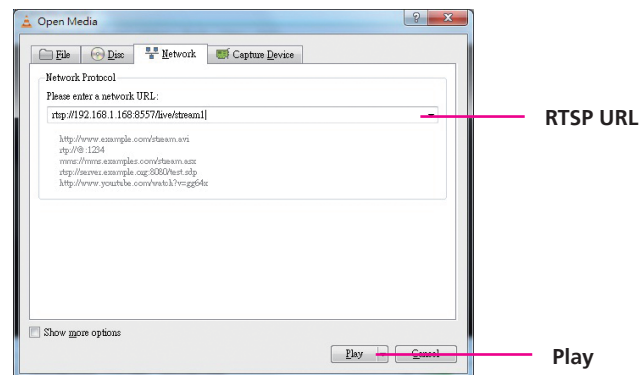
*rtsp://192.168.1.168:554/live/stream1*

Note: RTSP URL of stream 1, similarly you can view stream 2 and 3 of the camera by entering their corresponding URLs. Please refer to **Ports** on page 25 for more information on the URL link.

4. Press the **Play** button to start streaming.



Open Network Stream



5. You will be prompted with a pop-up window asking for login information, type in "admin" (default login name) and "9999" (default password)

